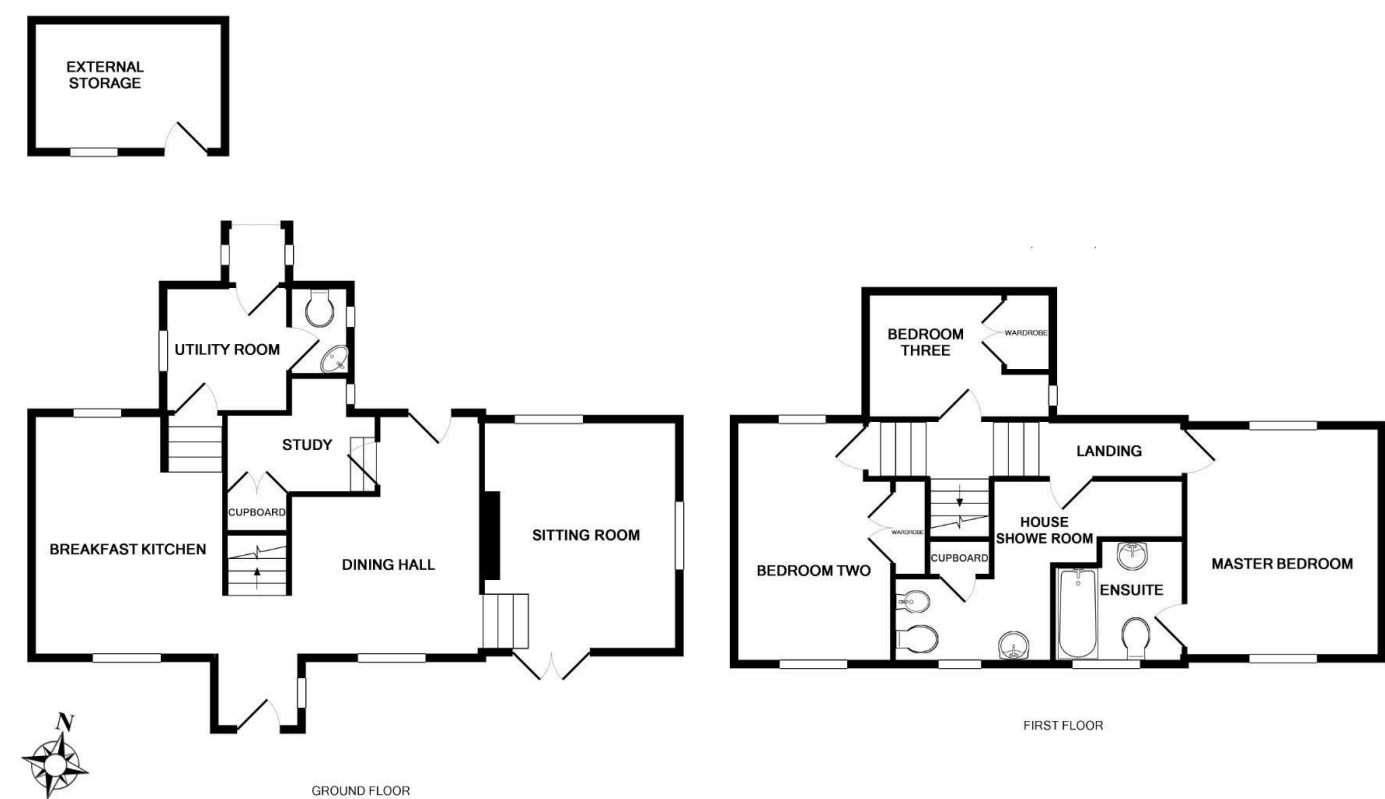


Floor Plan



Energy Performance Certificate



Directions

Proceed along the A59 Skipton Road to Fewston reservoir and turn right into Hall lane (sign posted West End) follow the road and the property is easily found on the left hand side marked by a Hopkinson's for sale board.

Council Tax Band Tenure Freehold

Agents Notes
We do not set out to avoid our civil and criminal liabilities by using clever use of word or photography however it is not always possible for us to guarantee that everything in our sales material is accurate. We strongly recommend that prospective purchasers seek their own professional advice. No responsibility can be accepted for any expenses incurred by intending Purchasers. We do not check or guarantee the condition of appliances, services or equipment. Equally any verbal statement from our staff forms no point of a contract. If you require written confirmation on any point we will gladly assist.



£850,000

Greystone Farm West End, Summerbridge, Harrogate, HG3 4BB 3 Bedroom House - Detached

A beautifully presented detached period farm house, superbly restored, located in one of the most idyllic position in Yorkshire, with far reaching country side views.



HOPKINSONS

ESTATE AGENTS

16 Princes Street, Harrogate, HG1 1NH

Telephone: 01423 501 201

info@hopkinsons.net

Description

A complete renovation with extensions now provide stylish accommodation: entrance porch, study, guest cloaks/wc, impressive dining hall, superb sitting room with raised stone hearth, inset log burning stove and French doors to the garden.

Stunning breakfast kitchen with Range Master duel fuel cooker and fully integrated appliances extending to the coordinated utility room. Both floors fitted with under floor heating supplied by LPG system.

A wide staircase leads to a character first floor landing. Master bedroom with dual aspect, exposed ceiling beams and luxury en suite bathroom. Two further bedrooms and a luxury house shower room.

Outside there are manicured gardens with shaped lawns and delightful sitting areas. Useful stone built garden store and ample private parking.

