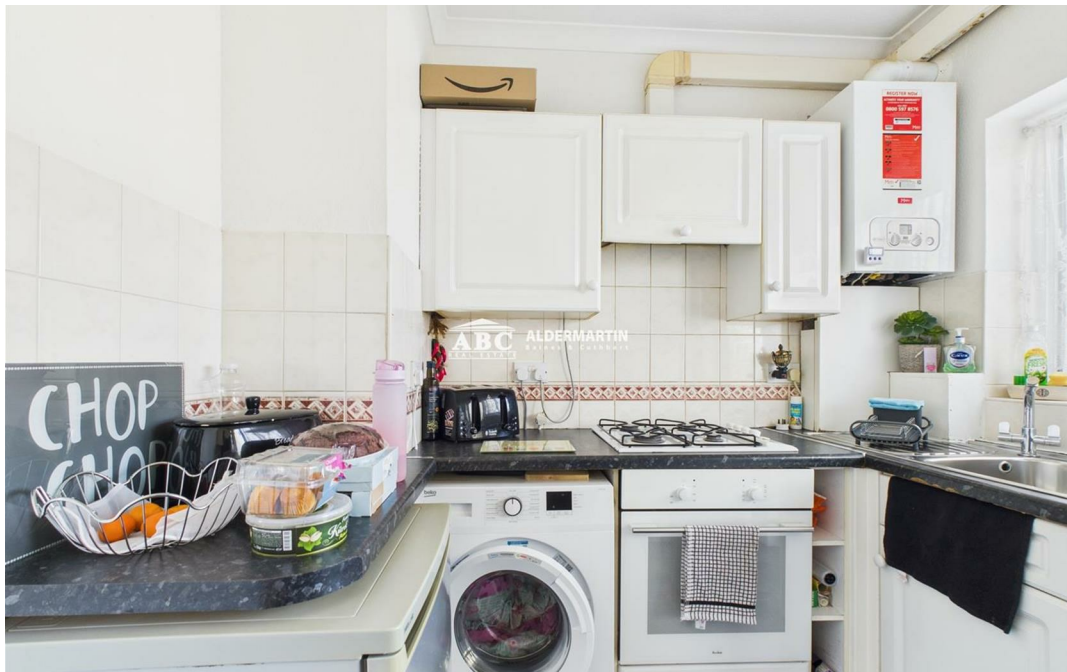
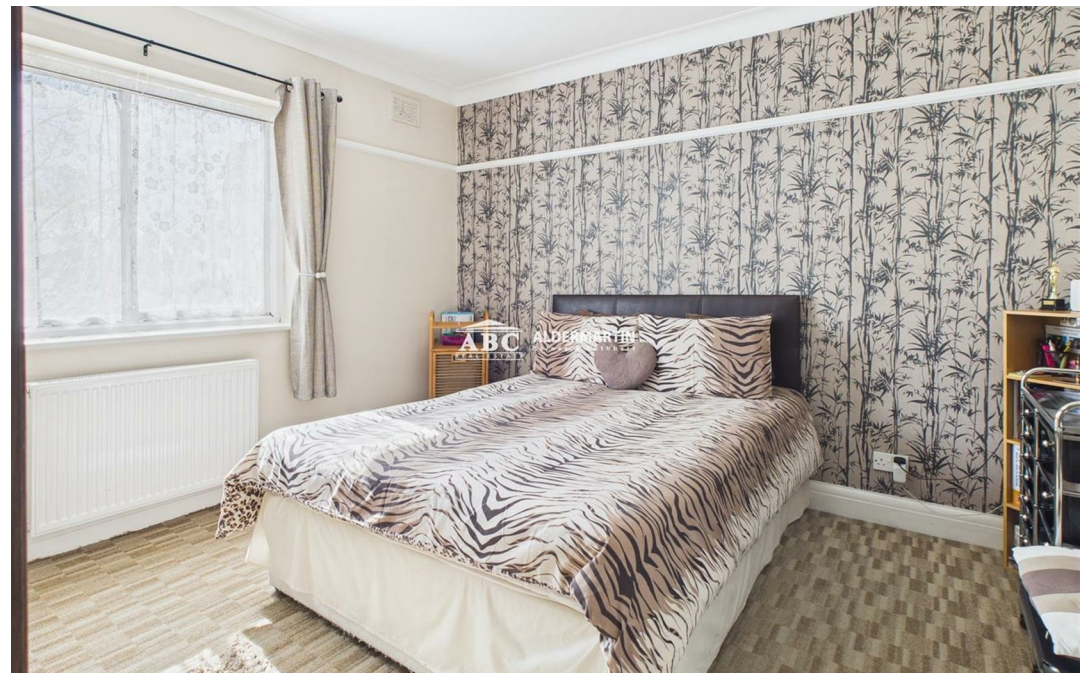
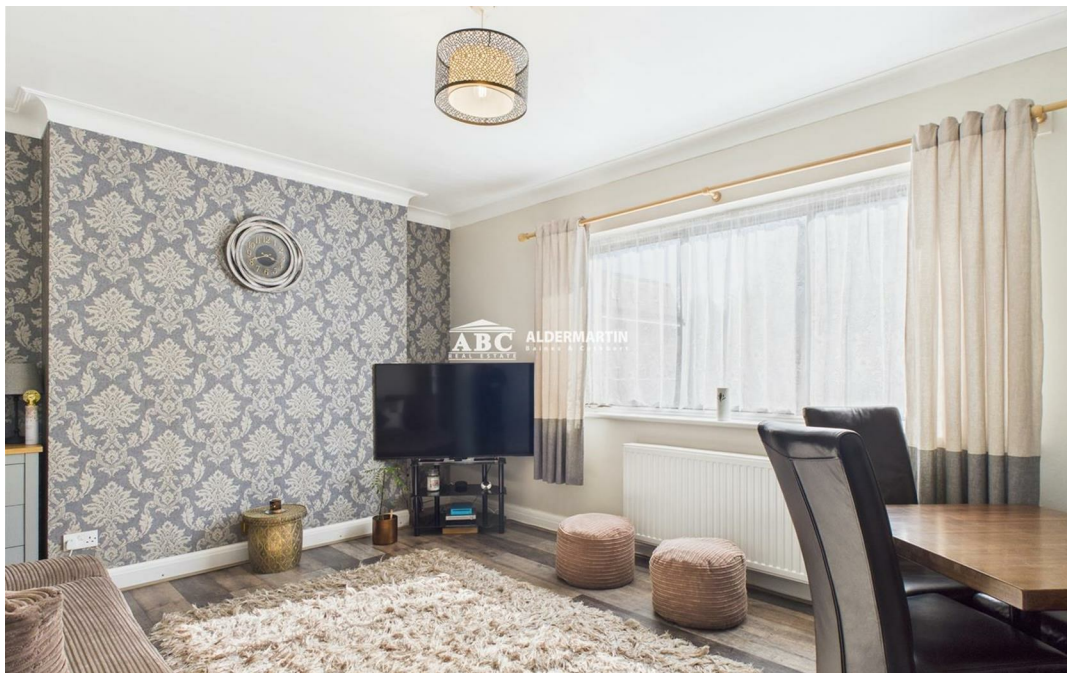




Orchard Court, Edgware HA8 7SX

£339,950
Share of
£5,000,000





- TWO BEDROOM FLAT
- 996 YEAR LEASE
- OFF STREET PARKING

- FIRST FLOOR
- WELL TENDED COMMUNAL GARDENS
- CLOSE TO CENTRAL EDGWARE

- GOOD DECORATIVE CONDITION
- EPC RATING C - COUNCIL TAX BAND C



This first floor two bedroom flat is located close to central Edgware shopping centre, with its Broadwalk Shopping Mall and the Northern Line Tube Station, many restaurants and transport links.

Good schools and several places of worship are also within easy reach. It is offered in very good decorative order

It has the benefit of a 999 year lease, off street parking and also very well tended and extensive communal gardens.