

ALLDAY
& MILLER



Abbotswood Way, Hayes, UB3 3PG
£250,000

1 bed 1 bath 1 car D



Abbotswood Way, Hayes, UB3 3PG

£250,000

- Ground Floor Apartment
- One Double Bedroom
- Modern Fitted Kitchen
- Chain Free
- Walking Distance To Town Centre
- Immaculate Condition
- Recently Renovated Throughout
- Integrated Appliances
- Two Allocated Parking Spaces
- Direct Access To Secure Communal Garden

Description

This delightful property combines comfort and style, making it a perfect choice for those looking to step onto the property ladder.

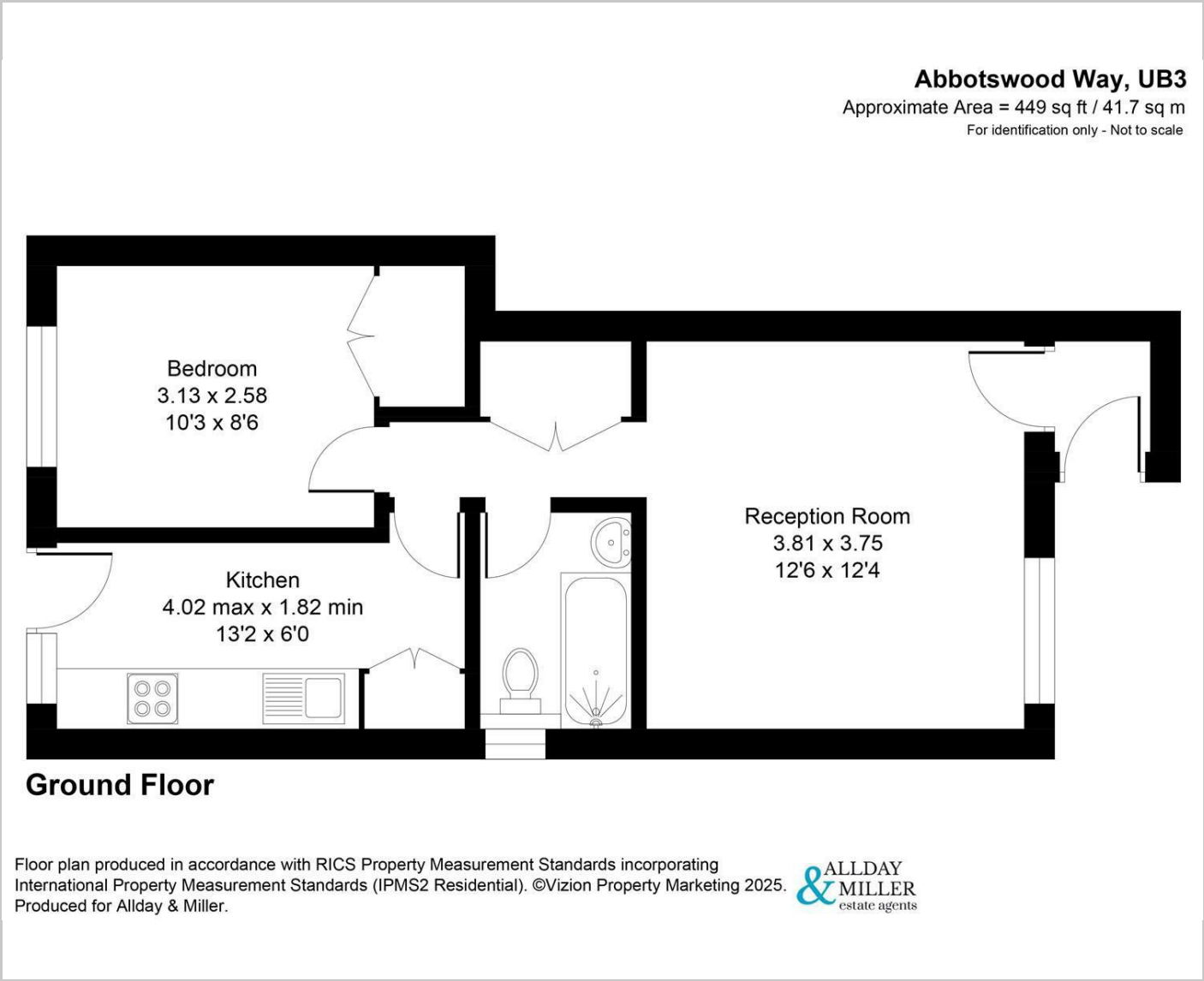
With its inviting spaces and modern amenities, this home comprises of a bright and airy reception room, perfect for relaxation, and a stylish fitted kitchen. The double bedroom is generously sized, ensuring comfort, while the modern bathroom features contemporary fixtures that enhance the overall appeal.

Situation

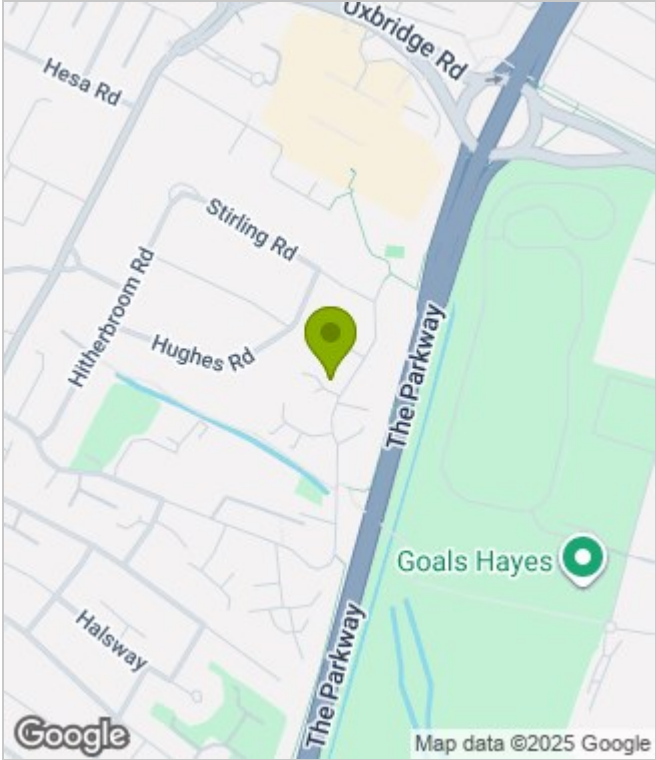
Abbotswood Way located in the heart of Hayes. The town centre just moments away with a variety of local cafes, coffee shops, Botwell leisure centre and supermarkets. Hayes and Harlington station is just a short drive away with the Elizabeth line giving easy links to central London and back towards Heathrow and Reading. Also benefits from being close to multiple bus links connecting you to all local areas such as Uxbridge, Northolt, Greenford, Heathrow, Ealing and Harrow The M25, M4 motorways are just a short drive away. A number of highly regarded schools in the local area including Botwell House Catholic Primary School and Harlington secondary school.



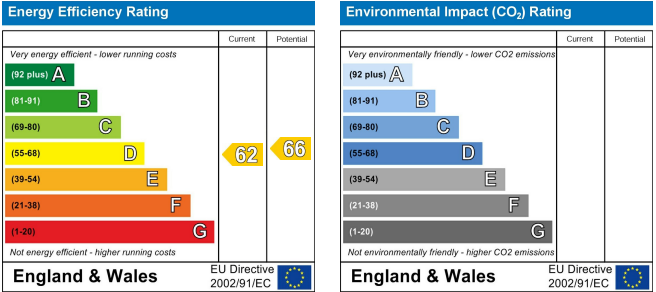
Floor Plans



Area Map



Energy Performance Graph



These particulars, whilst believed to be accurate are set out as a general outline only for guidance and do not constitute any part of an offer or contract. Intending purchasers should not rely on them as statements of representation of fact, but must satisfy themselves by inspection or otherwise as to their accuracy. No person in this firms employment has the authority to make or give any representation or warranty in respect of the property.