

ALLDAY
& MILLER



Hayes End Drive, Hayes, UB4 8HE
£700,000

4 3 2 C



Hayes End Drive, Hayes, UB4 8HE

£700,000

- Four Double Bedrooms
- Three Bathrooms
- Stunning Garden With Decked Area
- Close To Local Amenities
- Sought After Location
- Semi Detached
- Stylish Interiors Throughout
- Outbuilding To Rear
- Nearby To Highly Regarded Schools
- Extended To The Rear & Loft

Description

This well presented semi detached family home comprises of a welcoming entrance, bright and spacious reception room, sleek fitted kitchen with an island breakfast bar and French doors providing access to the rear garden, with a decked area and an outbuilding.

The first floor boasts two double bedrooms and a family bathroom.

The second floor enjoys two further bedrooms with plenty of storage and a bathroom suite.

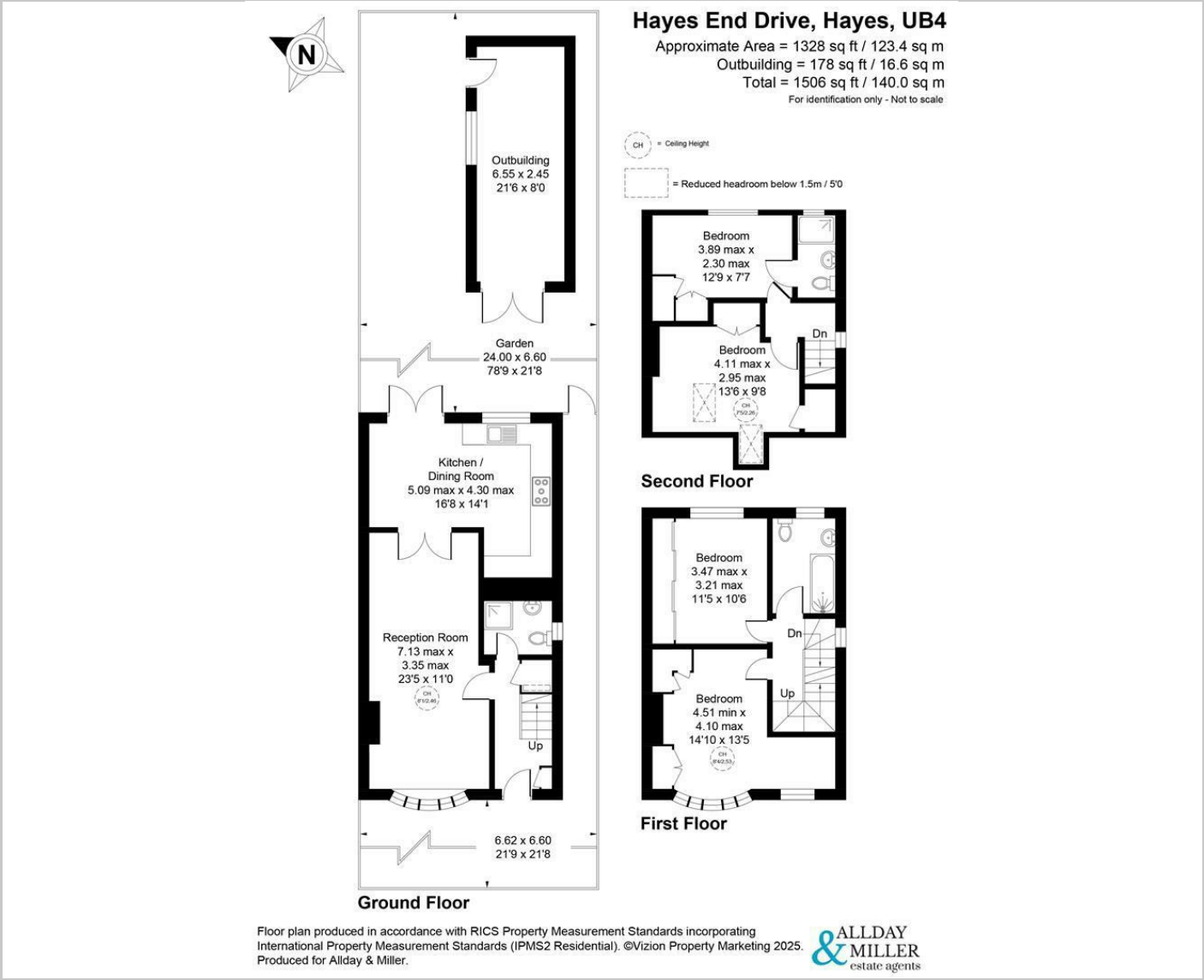
To the rear a stunning private garden with an outbuilding store, perfect for extra storage.

Situation

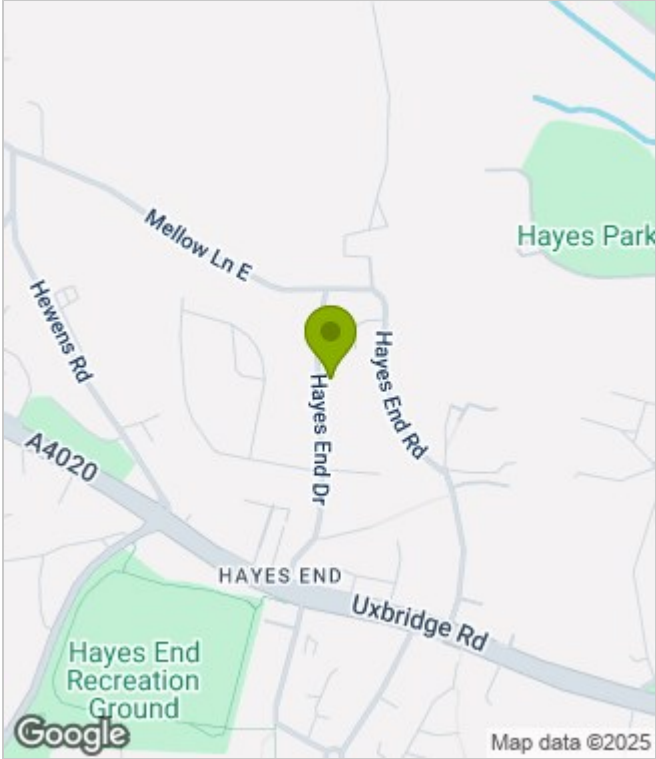
Conveniently located, this home enjoys easy access to a range of local amenities, including schools, shops, and recreational facilities. Commuters will appreciate the proximity to transport links, with Hayes & Harlington Station (Elizabeth Line) and various bus routes within reach. These links provide excellent connectivity to central London and surrounding areas, making your daily commute or city outings a breeze. This property is in a family-friendly community, you'll have access to excellent schools, parks, and recreational facilities, making it an ideal place to raise a family.



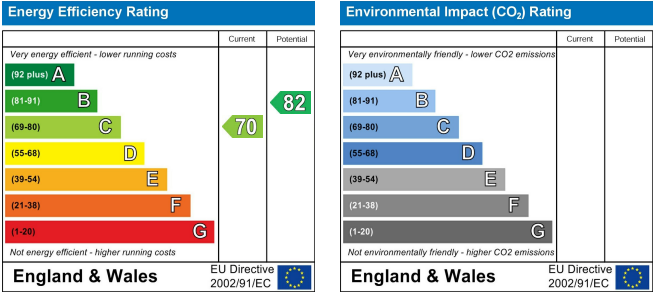
Floor Plans



Area Map



Energy Performance Graph



These particulars, whilst believed to be accurate are set out as a general outline only for guidance and do not constitute any part of an offer or contract. Intending purchasers should not rely on them as statements of representation of fact, but must satisfy themselves by inspection or otherwise as to their accuracy. No person in this firms employment has the authority to make or give any representation or warranty in respect of the property.