

ALLDAY  
& MILLER



Lansbury Drive, Hayes, UB4 8RZ  
£580,000

3 2 1 C





Lansbury Drive, Hayes, UB4 8RZ

**£580,000**

- Three Bedrooms
- 'A Type' Nash Build
- Potential To Extend The Loft
- Outbuilding + Bar In Rear Garden
- Good Schools Locally
- Semi-Detached - Freehold
- Extended To The Rear
- Downstairs WC
- Driveway
- Walking Distance To Shops



## Description

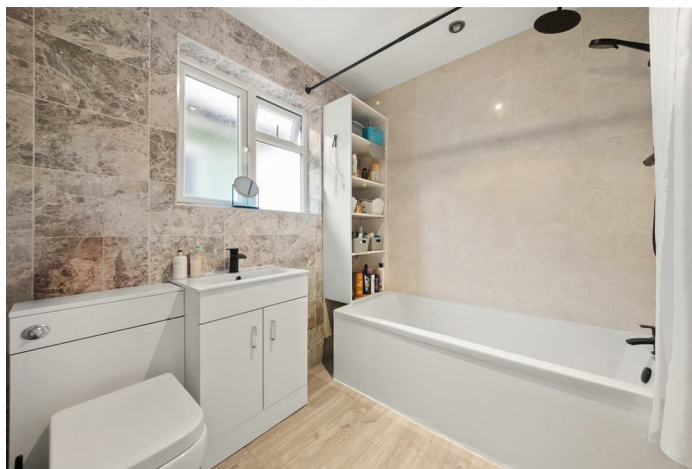
This well presented home is an 'A Type' Nash build meaning the larger style of house in the area, it creates the perfect space for family living comprising of a welcoming entrance hallway, spacious and light filled reception room with a fire place, the through lounge leads you in to the full width kitchen/diner extension, utility room and downstairs WC completes the ground floor.

The first floor features three bedrooms and a recently refurbished family bathroom suite.

A front driveway benefiting from off street parking for multiple vehicles. To the rear enjoys a private and secluded garden with an outbuilding and a bar.

## Situation

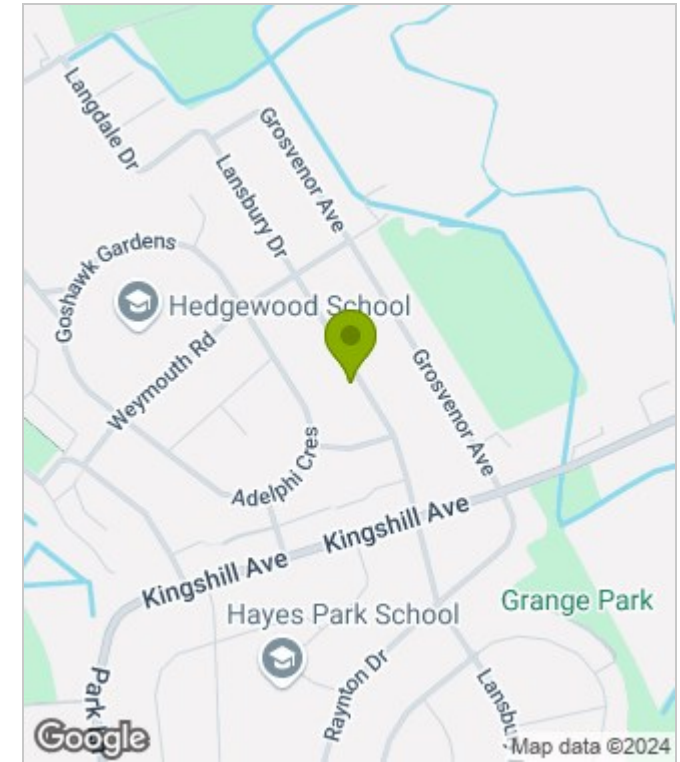
Lansbury Drive a popular residential road close to a number of local amenities including Kingshill high street with its variety of local shops, cafes, bakery's and coffee shops. A number of highly regarded schools in the local area including Hayes Park primary school and St. Raphaels. Northolt Underground Station within easy reach, its several bus links available and the central line giving easy links to Central London and the surrounding.



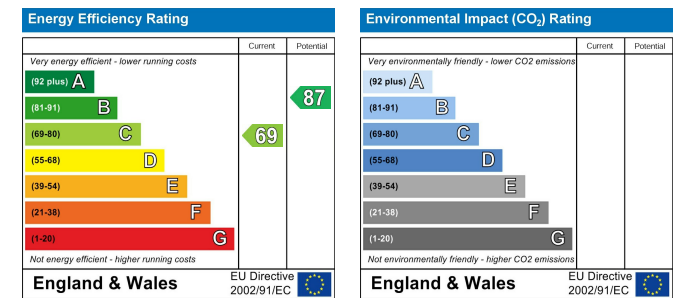
## Floor Plans



## Area Map



## Energy Performance Graph



These particulars, whilst believed to be accurate are set out as a general outline only for guidance and do not constitute any part of an offer or contract. Intending purchasers should not rely on them as statements of representation of fact, but must satisfy themselves by inspection or otherwise as to their accuracy. No person in this firm's employment has the authority to make or give any representation or warranty in respect of the property.