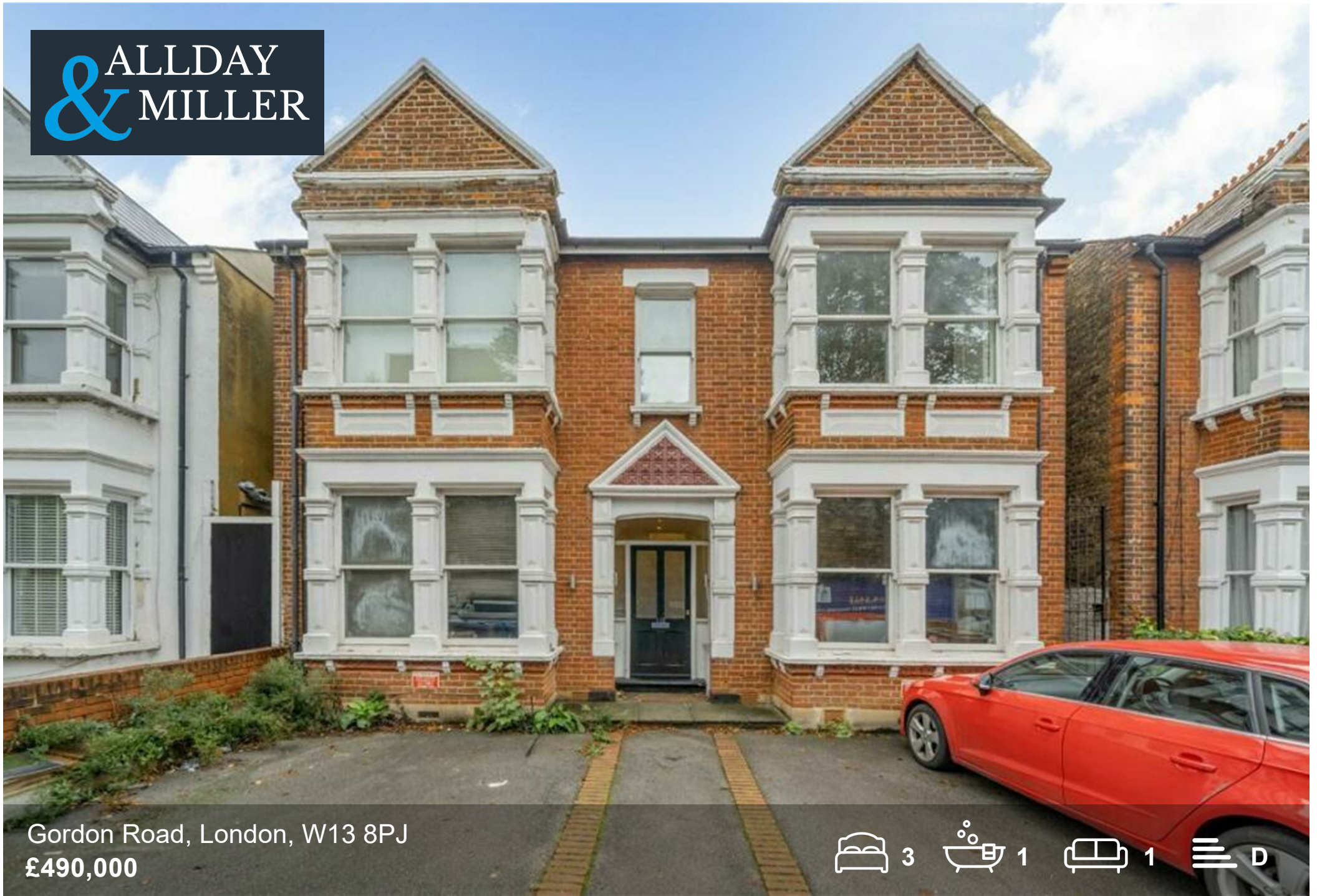
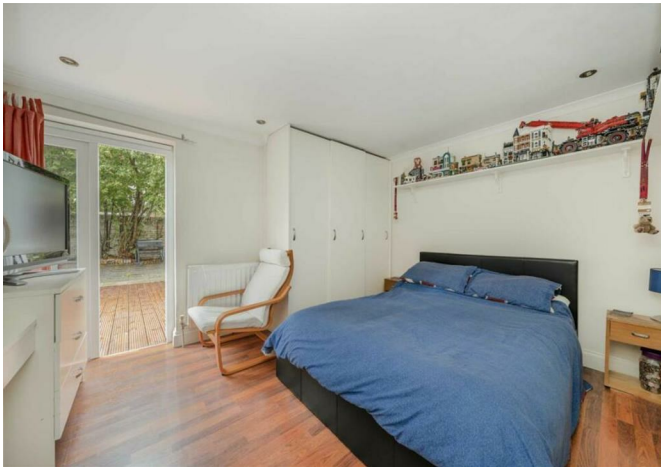


ALLDAY
& MILLER



Gordon Road, London, W13 8PJ
£490,000

3 1 1 D



Gordon Road, London, W13 8PJ

£490,000

- Three Bedrooms
- Excellent Location
- New Lease Upon Completion
- Off Street Parking
- Great For First Time Buyers / Investors
- Private Rear Garden
- Well Presented Ground Floor Apartment
- Fitted Kitchen
- Close to Elizabeth line at West Ealing
- Chain Free

Description

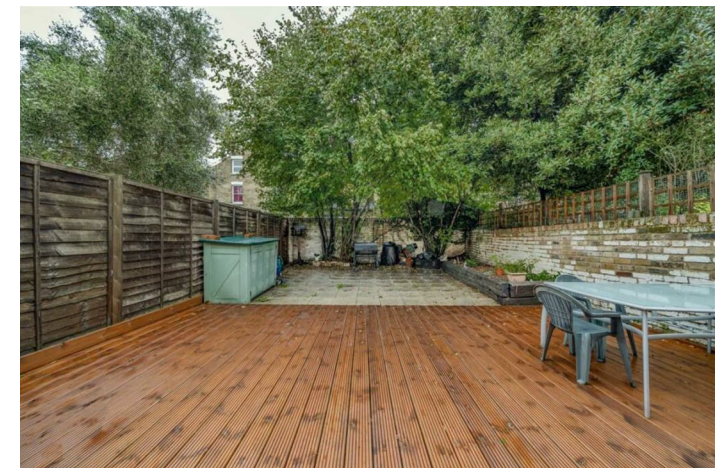
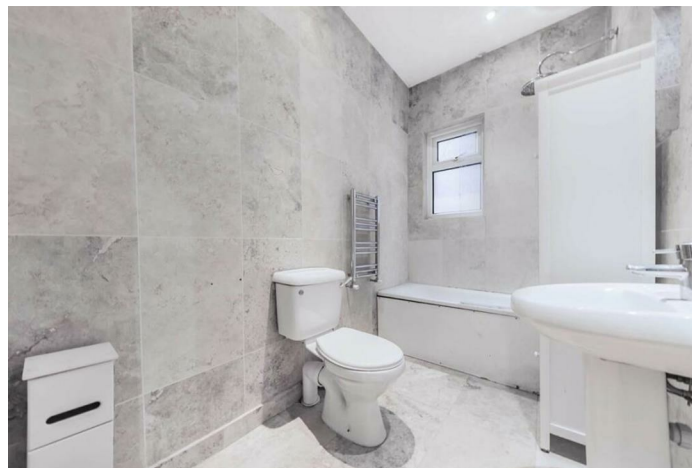
This well presented period conversion offers three bedrooms and direct access to a private south facing garden, off street parking and a long underlying lease. This is also sold with no onward chain.

This ground floor apartment is located in a highly sought-after location and spans front to the back of the building. It features a welcoming entrance and three good sized bedrooms.

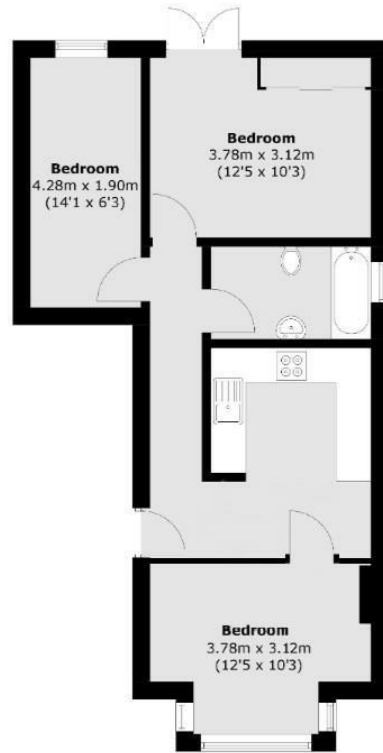
The property benefits from being a light, airy & spacious ground floor apartment, providing a warm, family friendly atmosphere as well as exclusive living experience. The property comes with a large private garden for both children and adults to explore & enjoy.

Situation

This highly sought-after area offers a perfect blend of tranquillity and convenience, within easy walking distance of both Ealing Broadway and West Ealing stations. From these stations, the Elizabeth line can swiftly transport you to central London in just 11 minutes and to Heathrow Airport in approximately 14 minutes

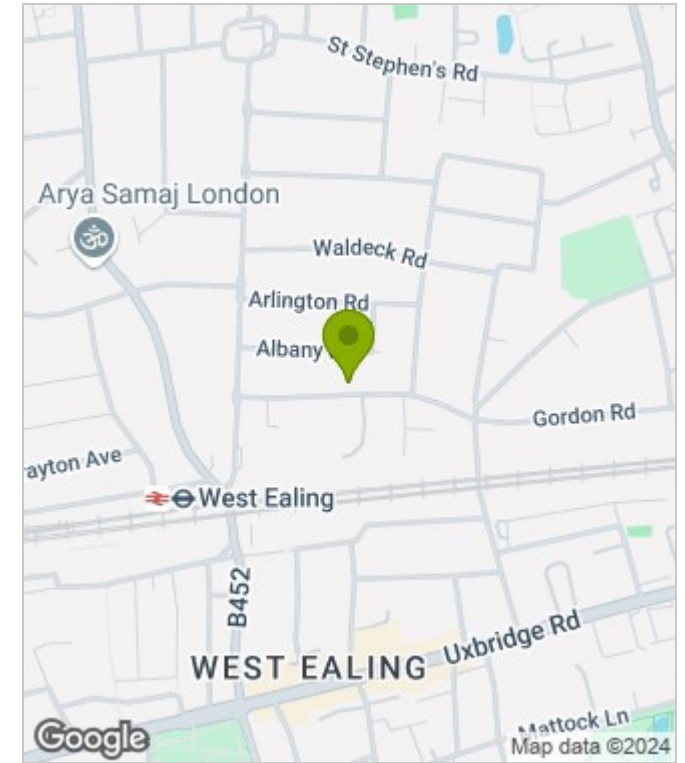


Floor Plans

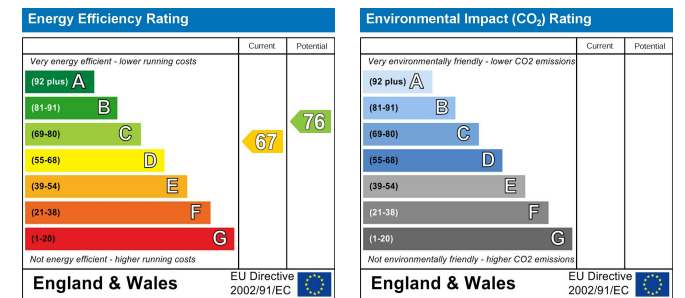


Total area (approx.): 51.9 sq. m (558.6 sq. ft)
(Excluding Eaves)

Area Map



Energy Performance Graph



These particulars, whilst believed to be accurate are set out as a general outline only for guidance and do not constitute any part of an offer or contract. Intending purchasers should not rely on them as statements of representation of fact, but must satisfy themselves by inspection or otherwise as to their accuracy. No person in this firm's employment has the authority to make or give any representation or warranty in respect of the property.