

ALLDAY
& MILLER



Raleigh Avenue, Hayes, UB4 0EE
£585,000

3 1 1 D



Raleigh Avenue, Hayes, UB4 0EE

£585,000

- Semi-Detached House
- Potential To Extend STPP
- Driveway
- Good Schools Locally
- Easy Reach To A Elizabeth Line Station
- Freehold
- Large Private Rear Garden
- Popular Location
- Great Transport Links
- Close To Lombardy Retail Park

Description

A semi-detached freehold house with over a 100ft rear garden and ample of scope to extend (stpp).

Versatile and spacious this property presented to the market comprises of an inviting entrance, generously sized reception room, fitted kitchen/ dining room which provides access to the rear garden.

Rising to the first floor boasts two double bedrooms and a further bedroom/ study room, completing with a family bathroom suite.

The front a paved driveway creating a space for off road parking. To the rear a private and secluded garden with a lawn and patio area, also a garage perfect for extra storage space.

Situation

Raleigh Avenues around 175 yards from the junction of Yeading Lane & Willow Tree Lane with it's local shopping facilities. With just a short walking distance to the popular Yeading Infant and Nursery School a bit further on, the Uxbridge Road with it's eclectic mix of shops, takeaways, restaurants, and small businesses just under a mile away. As is the Lombardy Retail Park with it's Sainsbury's superstore & a selection of well-known High Street brand shops. Local bus services providing access to Uxbridge, Ealing & the surrounding areas along with Hayes Town with it's Hayes & Harlington mainline station. The highly anticipated cross rail link has estimated journey times of:- Heathrow terminals 1, 2 & 3 of 5 minutes, Paddington 16 minutes Bond Street 20 minutes Liverpool Street 27 minutes and Canary Wharf 34 minutes. The A 312 Hayes Bypass providing access to the A40, M25 & the West, Heathrow & the M4 along with the Tescos Yeading superstore, B&Q & B&M are just over half a mile from the property.



Floor Plans

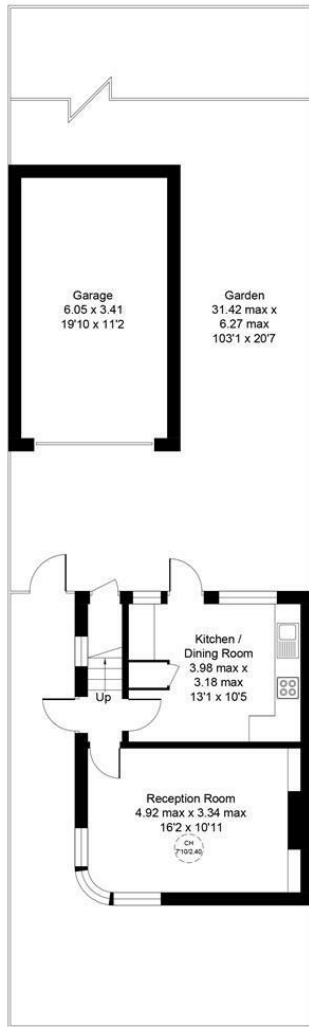
Raleigh Avenue, Hayes, UB4

Approximate Area = 717 sq ft / 66.6 sq m

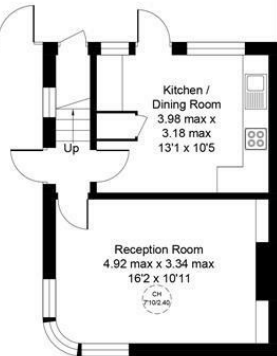
Garage = 225 sq ft / 20.9 sq m

Total = 942 sq ft / 87.5 sq m

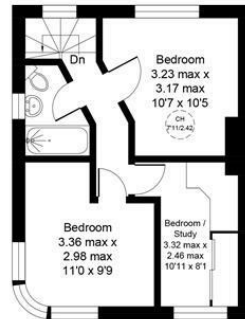
For identification only - Not to scale



Ground Floor



CH = Ceiling Height



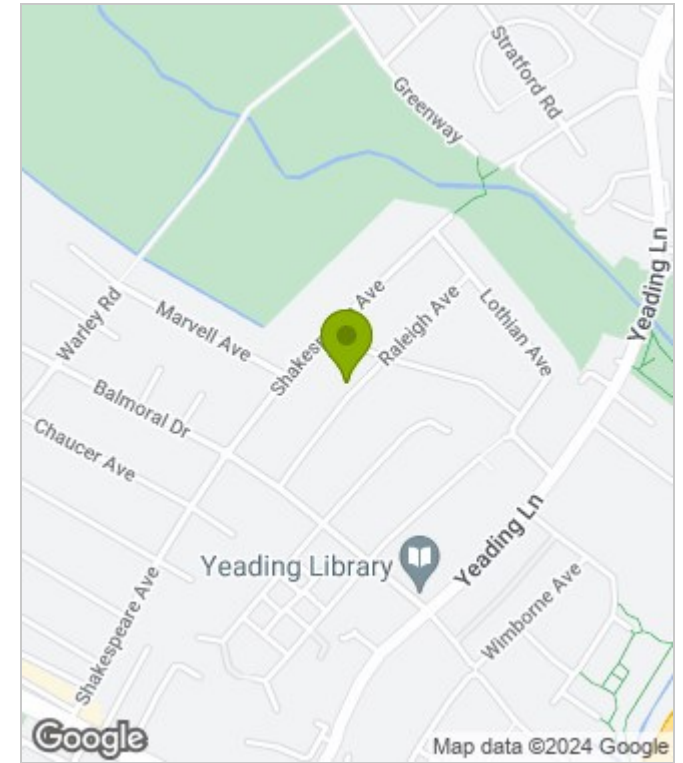
First Floor



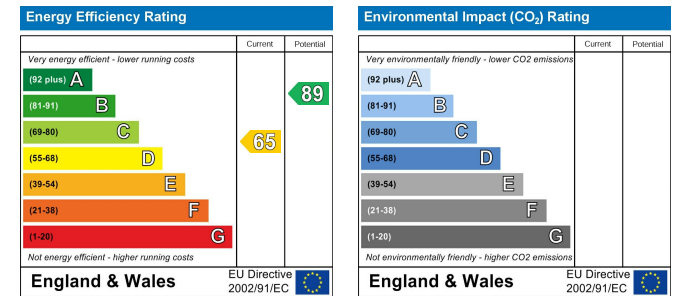
Floor plan produced in accordance with RICS Property Measurement Standards incorporating International Property Measurement Standards (IPMS2 Residential). ©Vizion Property Marketing 2024. Produced for Allday & Miller.

ALLDAY & MILLER
estate agents

Area Map



Energy Performance Graph



These particulars, whilst believed to be accurate are set out as a general outline only for guidance and do not constitute any part of an offer or contract. Intending purchasers should not rely on them as statements of representation of fact, but must satisfy themselves by inspection or otherwise as to their accuracy. No person in this firm's employment has the authority to make or give any representation or warranty in respect of the property.