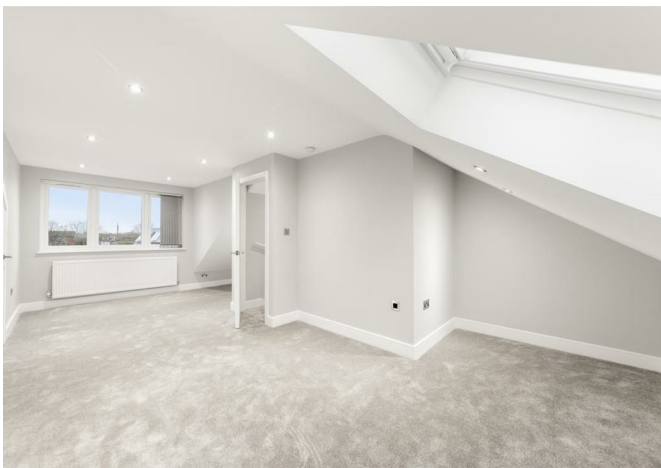


ALLDAY
& MILLER



Judge Heath Lane, Hayes, UB3 2PB
£640,000

 3  3  2  A



Judge Heath Lane, Hayes, UB3 2PB

£640,000

- Brand New Luxury Home
- Three Bathrooms
- Off Street Parking For Multiple Cars
- Two En Suite Bathrooms
- Ground Floor W.C
- 3/4 Bedrooms
- Stunning Design
- Easy Reach Of Hayes & Harlington Station
- 10 Year Build Guarantee
- Under Floor Heating

Description

This expansive and expertly designed home enjoys a floorplan over three floors, with large living room with bi fold doors, state of the art fitted kitchen breakfast room, ground floor w.c. The first floor enjoys a spacious bright landing, three rooms (one with modern en suite and a luxury family bathroom. The top floor is where you find the principle bedroom with a further en suite and large storage areas.

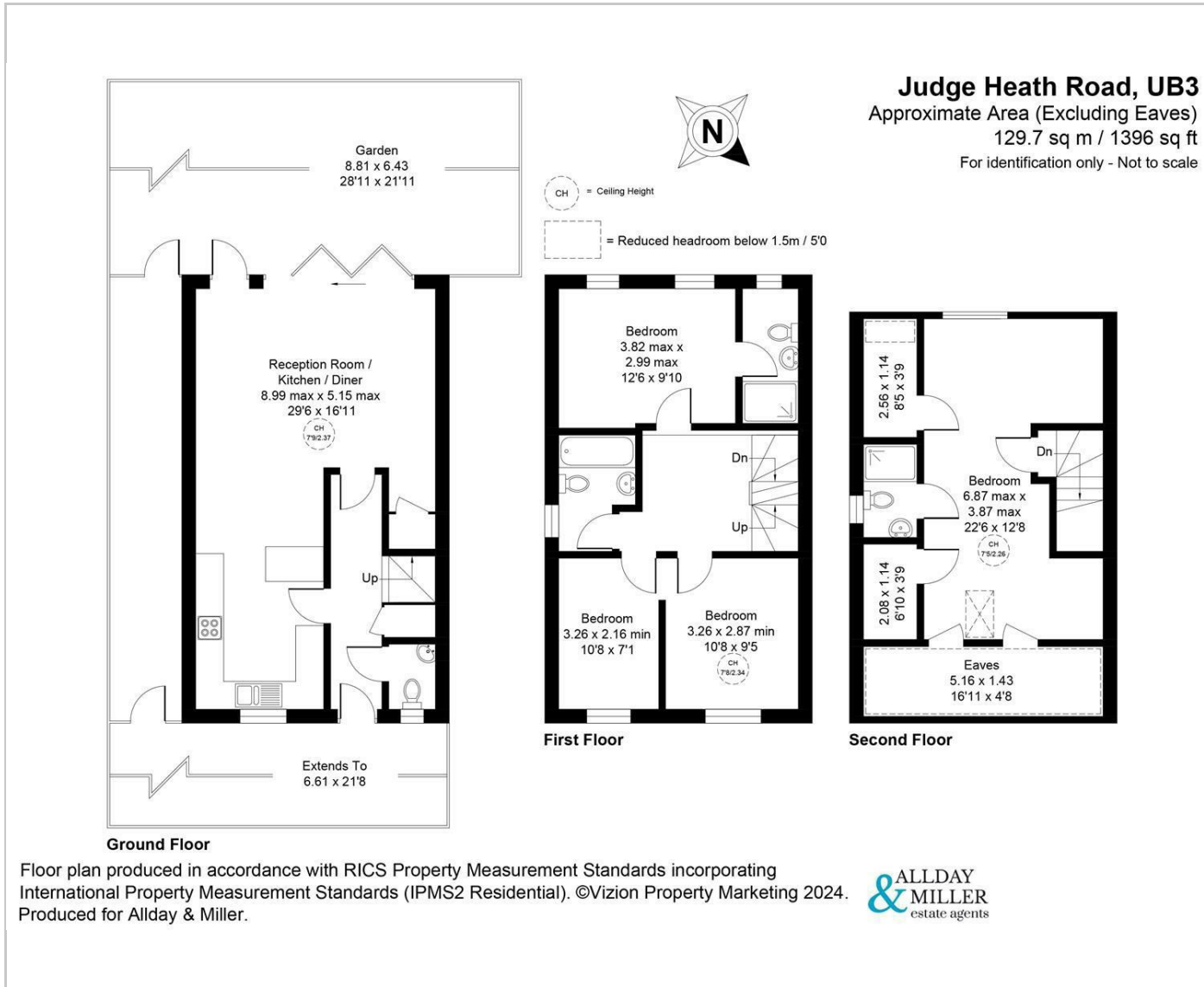
The front of the property enjoys a driveway and parking for two cars. electrical power point and further space to the side. The rear garden is easy to maintain with artificial grass and patio.

Situation

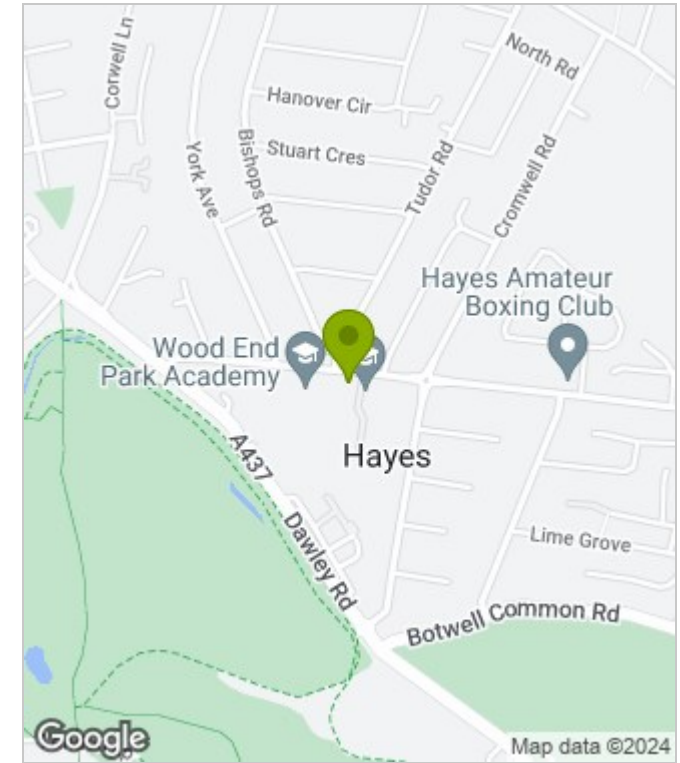
Judge Heath Lane is a popular residential road located just off Harlington Road. Hayes and Harlington station within a close proximity giving easy links to central London. Stockley Business Park, Heathrow Airport & the M4 Motorway are also within an easy reach. Uxbridge Town centre being just an 11 minute drive away with an array of restaurants, coffee shops, bars and shopping centres. There are also a number of high regarded schools including Hayes Park primary school and Grange Park.



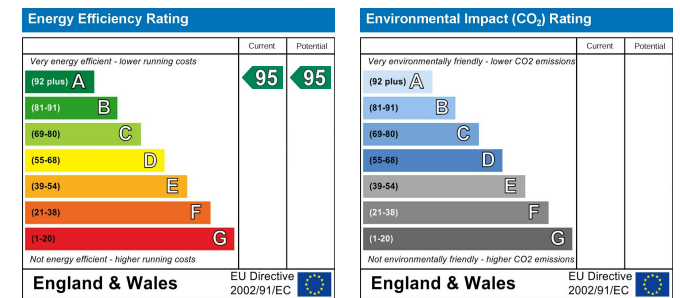
Floor Plans



Area Map



Energy Performance Graph



These particulars, whilst believed to be accurate are set out as a general outline only for guidance and do not constitute any part of an offer or contract. Intending purchasers should not rely on them as statements of representation of fact, but must satisfy themselves by inspection or otherwise as to their accuracy. No person in this firm's employment has the authority to make or give any representation or warranty in respect of the property.