



Enclave: Croydon

23 College Road, Croydon, CR0 1NN





STUDIO **LIVING** WITH SO MUCH MORE.



817 all-inclusive tech-enabled studios and one-bedroom apartments to rent.

50 stories with seven floors of amenity providing additional space for you to wine, dine, work, relax and play, all under one roof.



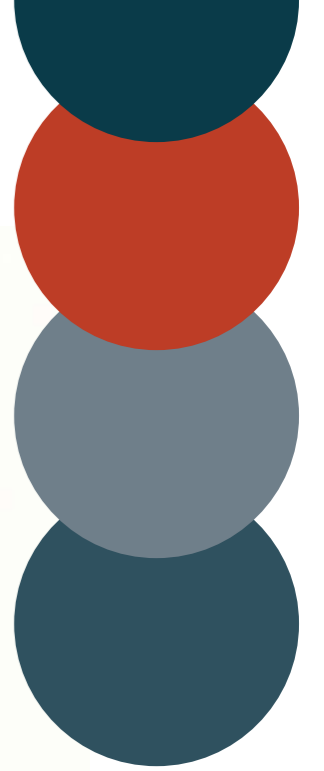
Choose from a selection of Cosy, Comfy and Roomy Studios or a 1-Bedroom Apartment. Rent is all-inclusive so you don't need to worry about utility bills and you have full access* to the amenities so you can bring your friends over to relax without needing to worry about space or privacy. With apartments spanning floors 4 – 46; the stunning, far-reaching views from the top will not disappoint.

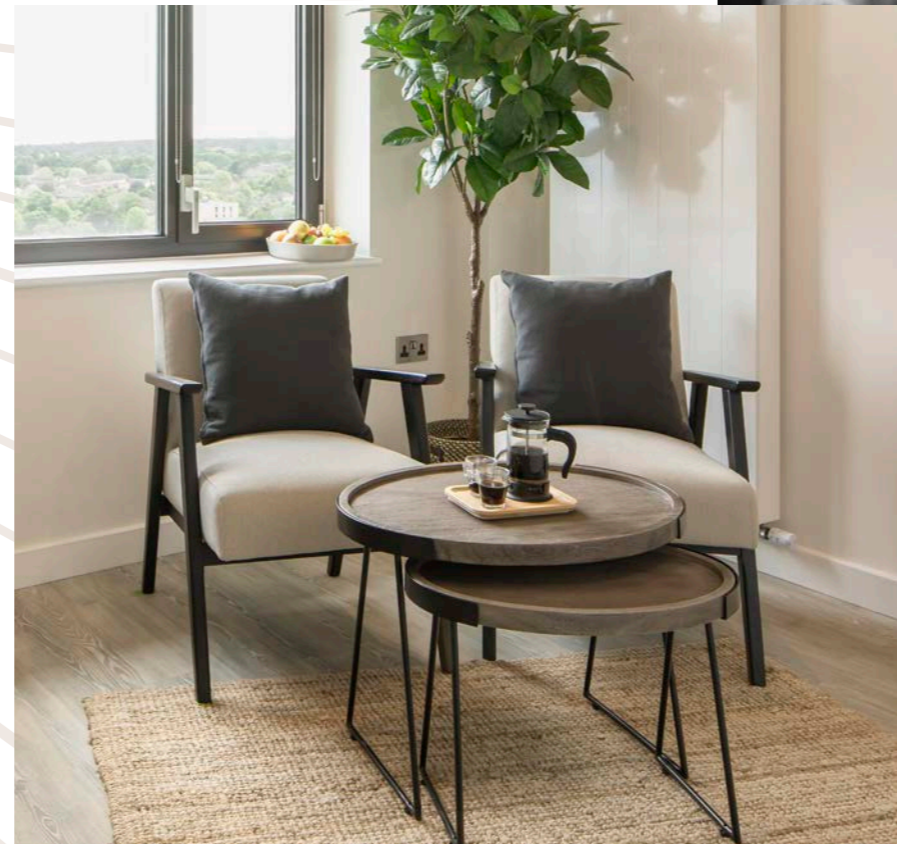
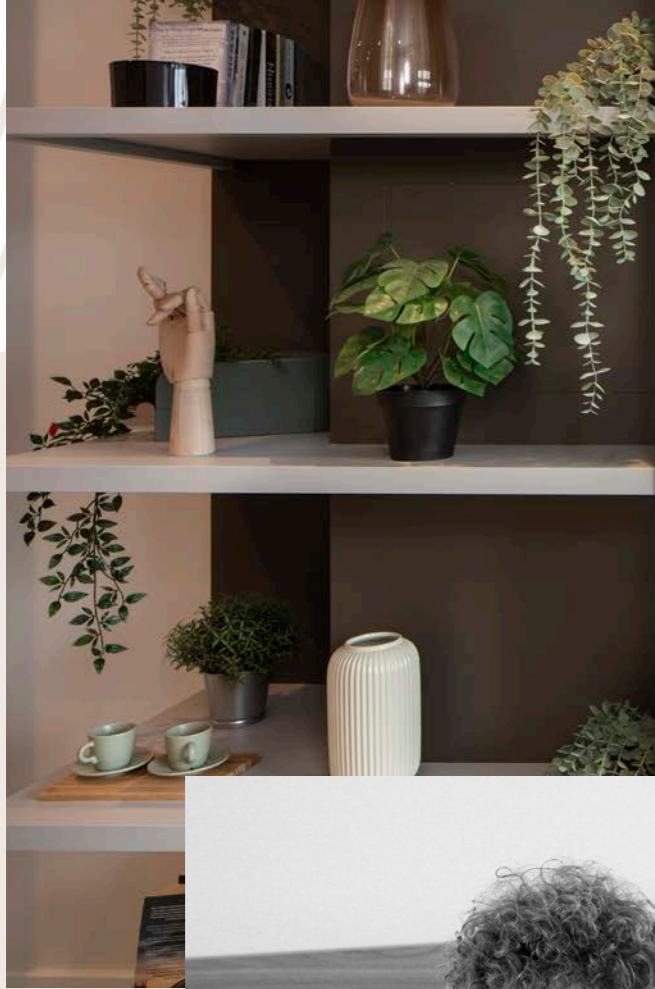
Each apartment is offered in a choice of three different colour palettes, so whether you're looking for a scandinavian-style retreat, a classic interior or a vibrant pad, we'll have the perfect stylish home to suit you.

Enjoy co-work areas, fitness suites, a resident bar lounge, wellness zones, games rooms, dining rooms, kitchens, a cinema, sky garden + more. Entertain, expand your network, make new friends or simply enjoy the additional space alone – our amenity spaces are curated for all.

Enclave: Croydon provides a 24/7 Residence Team so that you can enjoy comfort, safety and convenience at all times. Work, play, eat and drink, together or alone, when and how you want.

*(*spa use requires additional membership)*





APARTMENTS IN CROYDON



Cosy Studios

210 – 218 sqft

A membership at Enclave: Croydon provides an all-inclusive home and lifestyle.

All apartments come furnished with either a sofa or armchair/s, nested coffee tables, a desk/table and chair, and 1GB WiFi throughout (exact items depend on floorplan type).



Comfy Studios

270 – 279 sqft



Roomy Studios

285 – 307 sqft



1 Bed Apartments

292 – 295 sqft

IT'S ALL ABOUT CHOICE

Each apartment type is available in three colour schemes to suit your taste



Mid-Century Modern

This stylish colour scheme offers deep grey units paired with walnut colourings for a mid-century yet modern finish.



Tyrolean Blue

Brilliant, bold, confident. Make a statement – this palette has a stylish blue kitchen and living area whilst keeping tones muted for sleep.



Scandi Minimalism

Enjoy neutral colours and muted tones – the perfect urban retreat following a busy day in the city



All-inclusive Rent



Integrated Kitchen Appliances



Double or King Beds



Smart Home Enabled



Under Bed Storage



Heated Towel Rail



Housekeeping Services Available



Furnished

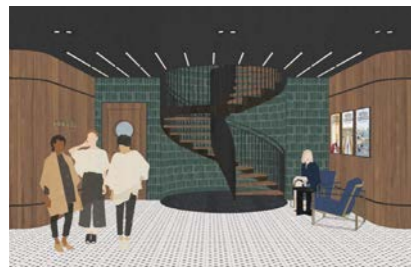


Exclusive Member Amenities



Accessible Apartments Available

Enclave: Croydon



A MEMBERSHIP LIKE NO OTHER

Seven floors of crafted and curated resident amenities and spaces that are available 24/7. Benefit from a living space that puts wellness first, enabling members to enjoy a full yet well-balanced city lifestyle.



Floor 48

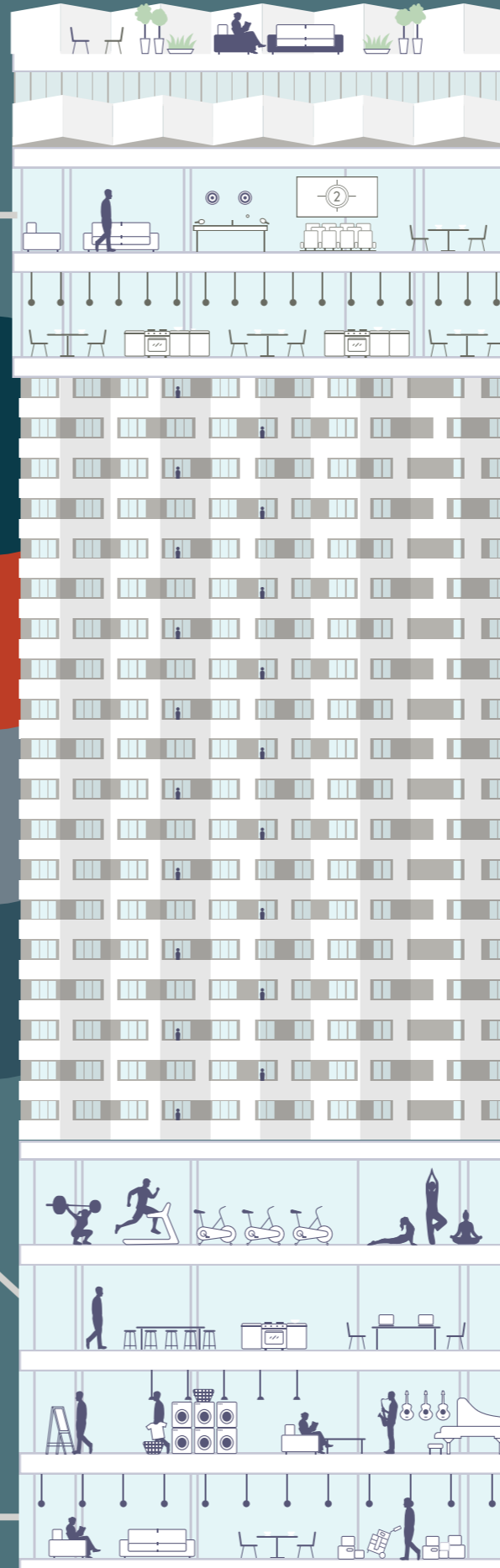
Bar Lounge	Cinema	Games Room	Poker Room	Dining Lounge
Sky Library	Big Screen Sports	Darts Alley	Private Dining	Private Screening

Floor 2

Co-working Lounge	Cook & Go Stations	Private Dining	Reading Room	Quiet Working
Communal Seating	Solo Workstations	Conference Room	Refreshment Station	

Ground Floor

Café	Reception/Lobby Lounge	Mail Room
------	------------------------	-----------



Roof Garden

Sky Garden	Entertainment Area	Wellbeing Garden	London Viewpoint
------------	--------------------	------------------	------------------

Floor 47

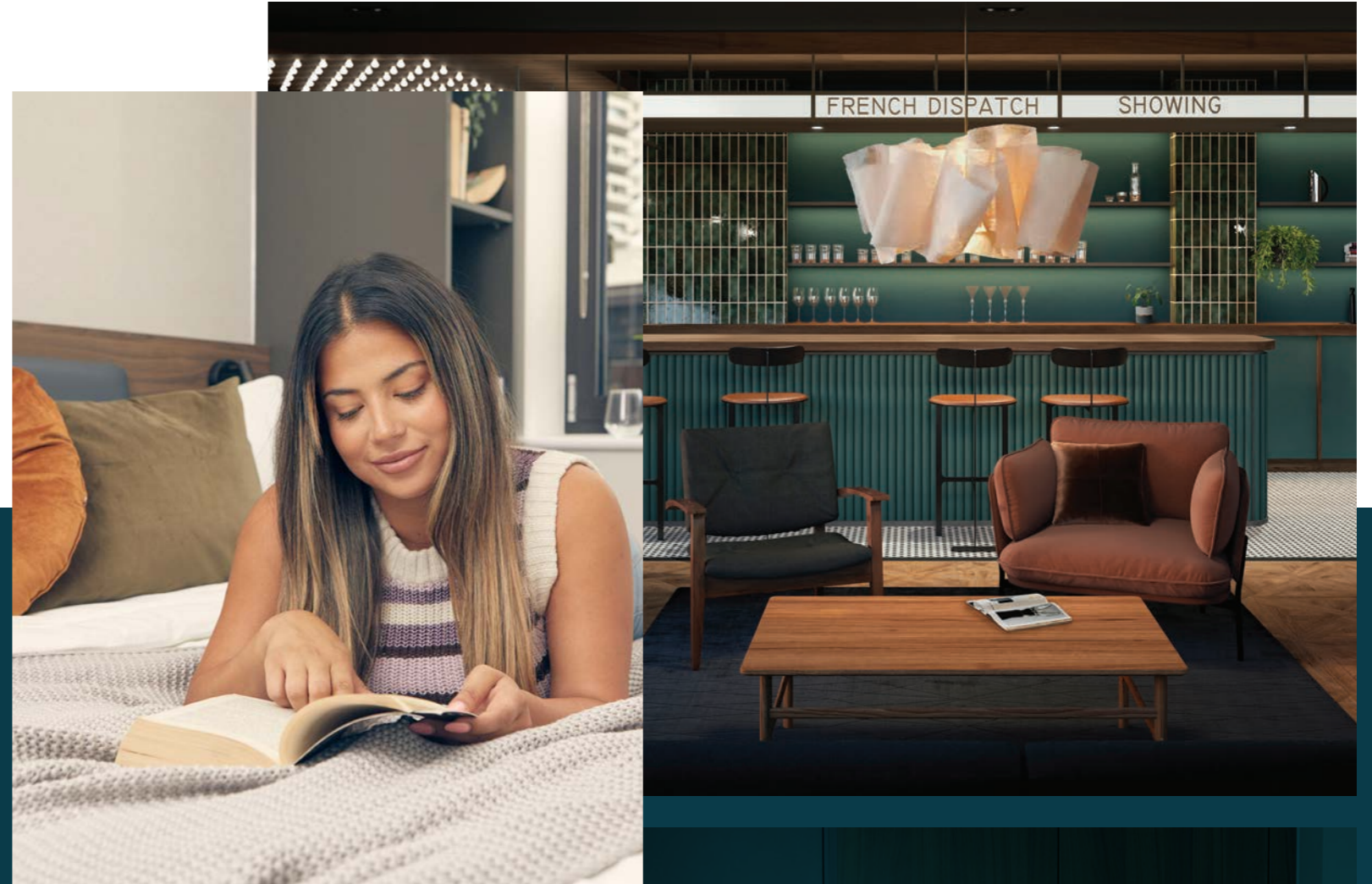
Private Dining	Dining Lounge	Show Kitchen	Communal Cooking	Sky Dining
----------------	---------------	--------------	------------------	------------

Floor 3

Gym	Multifaith Space	Podcast Studio	Spa	Switch-off Studio
Yoga Studio	Green Screen Studio	Hydration Station		

Floor 1

Launderette	Makers Space	Meeting Rooms	Music Room	Tulu Lockers
-------------	--------------	---------------	------------	--------------



THE ENCLAVE PROMISE

We pride ourselves on offering premium, rental accommodation with market-leading service levels at every stage of your journey with us. Renting a studio or 1 bed apartment at Enclave: Croydon is comfortable, convenient and hassle-free.



Premium Service



Comfortable



Convenient



Tech-enabled



Thoughtfully Designed



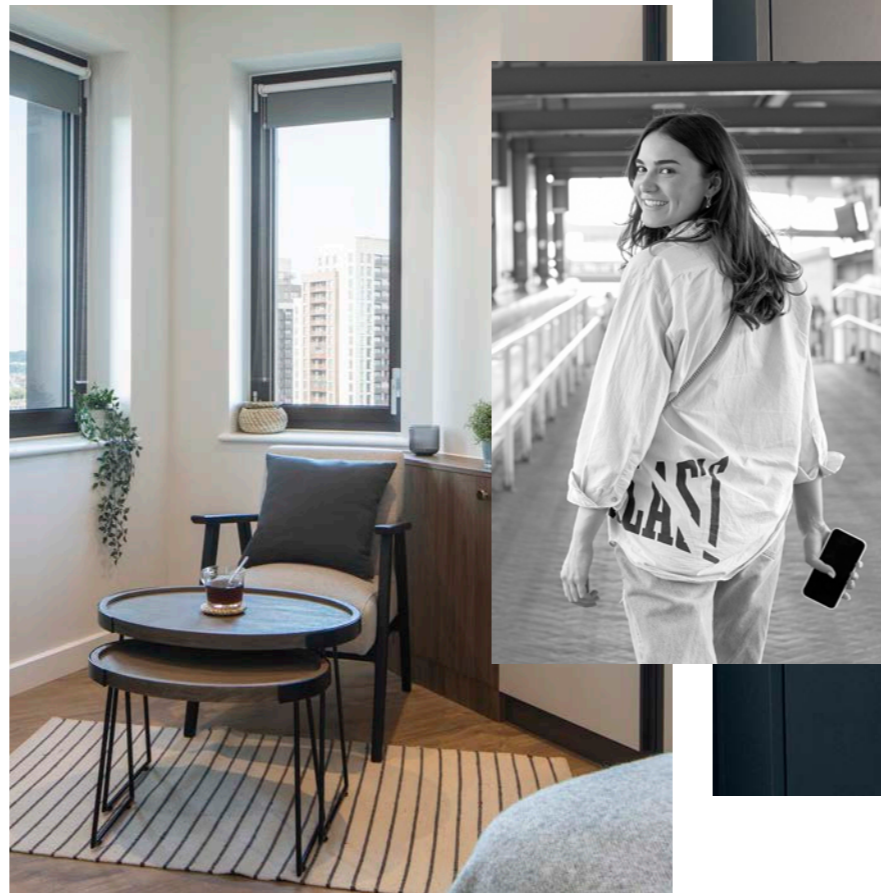
Well Connected

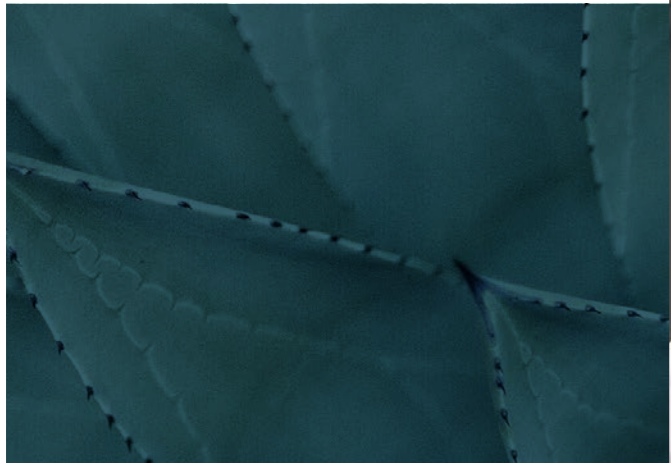


Hassle Free



Innovative





WELLNESS

We know how busy city living can be and how important it is to look after your body and mind. Enjoy convenient amenity spaces that support your health and wellness, enabling you to work out, relax and switch off.



Gym



Sky Garden



Yoga Studio



Switch-off Studio



Wellness Area



Spa*



Bike Hire Scheme



Wellbeing Garden

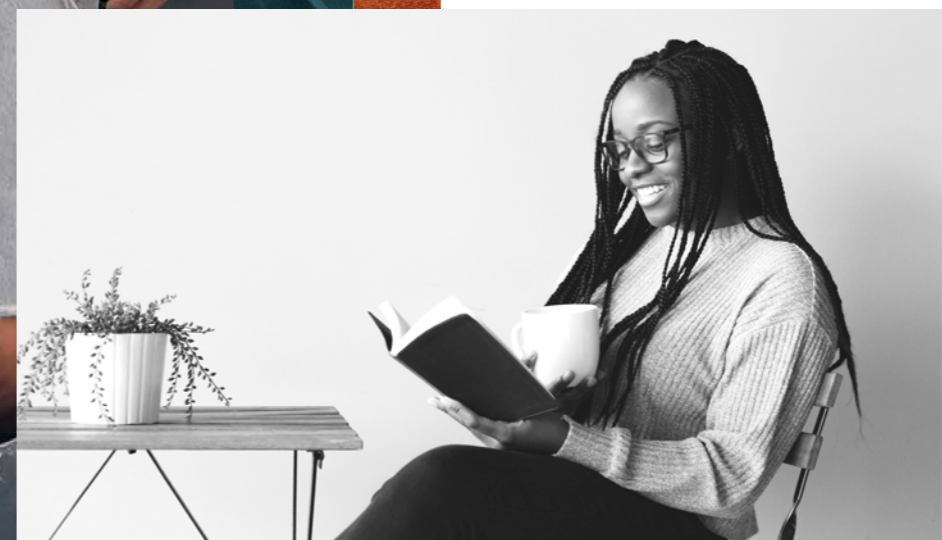


Reading Room



Sky Library

(*additional membership applies)





WORK HARD PLAY HARD.



Living at Enclave: Croydon, you'll have an abundance of convenient, stylish amenity spaces thoughtfully curated to support and enhance your daily life from dawn 'til dusk.

Tech-enabled areas and meeting rooms to help you work from home comfortably. Opportunities to network and grow your social circle by meeting other residents and their friends.

Not a fan of eating alone?

We have a whole floor of kitchens & dining areas spanning level 47 so you can host, cook, arrange gatherings or simply eat, surrounded by fellow residents. Enjoy breakfast, lunch and dinner with a view, every single day.



Entertain and be entertained – level 48 has it all.

Purchase a drink from our wine dispenser or bring your own. Sip peacefully in the evening while the sun goes down over the London skyline.

Enjoy one of our regular resident events, catch the big game with friends on the 75" screen in our Bar Lounge or immerse yourself in your favourite film in our 12-seat cinema.

Reserve your place at one of the regular poker nights, held in the Poker Room or perfect your aim with a game of darts.

Record your views in the Podcast Studio or create a masterpiece in the Green Screen Studio. It's all there for you to enjoy, included in your rental membership.



Enclave: Croydon

CONVENIENT & CONNECTED

Live with us and you'll have access to very frequent fast trains into central London. We're located a stone's throw from East Croydon Station so you can be in London Bridge in 13 minutes and Victoria in 16.

The tram stop is a minutes' walk from the front door, connecting you to Wimbledon for the District line, Elmer's End & Beckenham Junction.




**EAT,
DRINK,
SHOP**

We're on the doorstep of Croydon town centre, so you can be shopping, eating or drinking within minutes of leaving the building.

With Parkhill park just behind the building and three shopping centres less than an 8 minute walk away, you've got everything you need at your fingertips.





We've built Enclave: Croydon with you in mind, offering tech-enabled, convenient, all-inclusive living for London life on-the-go.


Our Residence Team are on hand to answer any questions you may have and our Night Concierge team will be looking after you, and the building, while you sleep, to ensure your safety and wellbeing at all times. We also have a maintenance technician on site to resolve any apartment issues, should they arise.

We want you to enjoy your time with us and enhance your day, providing regular resident events to give you the opportunity to kick back and relax, expand your social circle and meet new friends. If you'd rather a quieter lifestyle, there are plenty of areas for you to relax and unwind alone.

Enjoy the privacy of your own home; plus fitness, wellness, work and socialising all under one roof with unrivalled service.

We look forward to welcoming you.

At Enclave: Croydon, You are home.





📷 @enclave_rentals 📺 @EnclaveRentals

enclave.com/croydon