



Lee Road, Perivale
£710,000

SAB
ESTATES



Lee Road

Perivale, Greenford

- Potential to Extend STPP
- Chain Free
- Off Street Parking
- Close to Perivale Station
- Private Rear Garden
- Great Transport Links

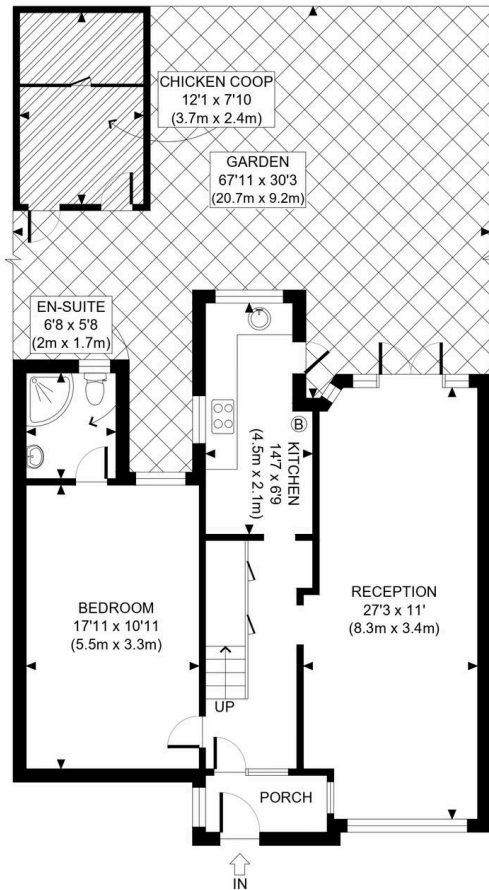
Council Tax band: D

Tenure: Freehold

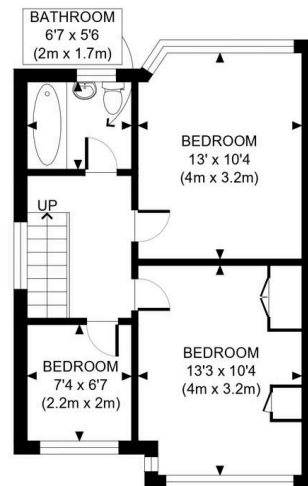
EPC Energy Efficiency Rating: D

EPC Environmental Impact Rating: D





GROUND FLOOR
GROSS INTERNAL
FLOOR AREA 743 SQ FT



FIRST FLOOR
GROSS INTERNAL
FLOOR AREA 429 SQ FT

APPROX. GROSS INTERNAL FLOOR AREA: 1172 SQ FT/ 109 SQM

PROPERTY PHOTO PLANS.CO.UK
ONE STOP SHOP FOR PROPERTY MARKETING

This plan is for illustrative purposes only and should be used as such by any prospective client. Whilst every attempt has been made to ensure the accuracy of the Floor Plan contained here, measurements of the doors, windows, rooms and any other items are approximate and no responsibility is taken for any errors, omissions, or misstatement. The services, systems and appliances shown have not been tested and no guarantee as to the operability or efficiency can be given.





SAB
ESTATES

SAB Estates

236-238 Ruislip Road, Greenford - UB6 9RS

020 8575 2929 • info@sabestates.com • www.sabestates.com/