



**Beechwood Gardens, London**

Guide Price **£760,000**

**SAB**  
ESTATES





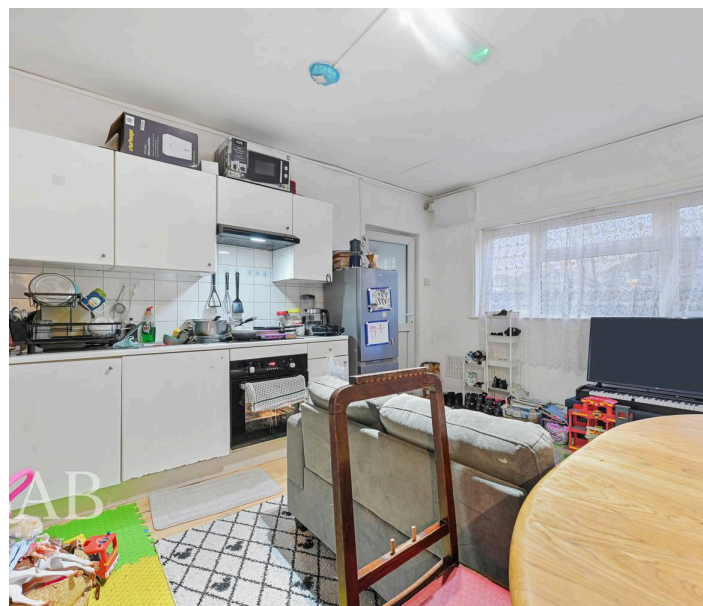
## Beechwood Gardens

London

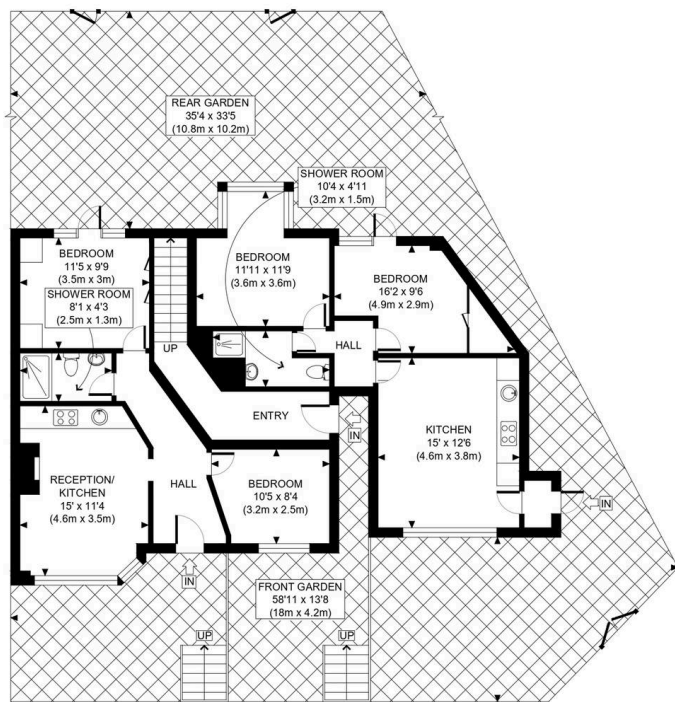
- To Be Sold via Secure Sale (Auction)
- Freehold Sold with Associated Leaseholds
- Close to Hanger Lane and Park Royal Stations
- Strong Rental Location with High Demand
- Private Parking Space for Each Flat
- Fully Let, Generating Approx. £64.2k Per Annum
- Semi-Detached Property with Three Self-Contained 2-Bed Flats

Council Tax band: TBD

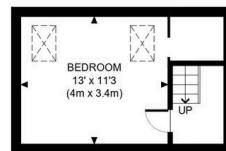
Tenure: Freehold



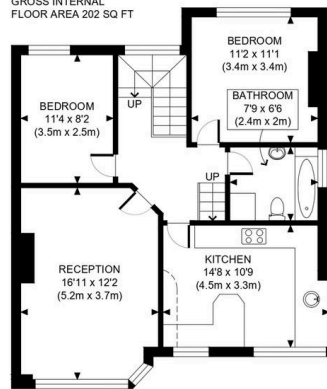




GROUND FLOOR  
GROSS INTERNAL  
FLOOR AREA 1128 SQ FT



SECOND FLOOR  
GROSS INTERNAL  
FLOOR AREA 202 SQ FT



FIRST FLOOR  
GROSS INTERNAL  
FLOOR AREA 751 SQ FT

APPROX. GROSS INTERNAL FLOOR AREA: 2081 SQ FT/ 193 SQM



**PROPERTY PHOTO PLANS.CO.UK**  
ONE STOP SHOP FOR PROPERTY MARKETING

This plan is for illustrative purposes only and should be used as such by any prospective client. Whilst every attempt has been made to ensure the accuracy of the Floor Plan contained here, measurements of the doors, windows, rooms and any other items are approximate and no responsibility is taken for any errors, omissions, or misstatement. The services, systems and appliances shown have not been tested and no guarantee as to the operability or efficiency can be given.





**SAB Estates**

236-238 Ruislip Road, Greenford - UB6 9RS

020 8575 2929 • [info@sabestates.com](mailto:info@sabestates.com) • [www.sabestates.com/](http://www.sabestates.com/)