



Greenway Gardens, Greenford
£595,000



Greenway Gardens

Greenford

- Immaculate Condition Throughout
- Off Street Parking
- Private Rear Garden
- Quiet Residential Road
- Downstairs WC
- Close to Well Regarded Schools

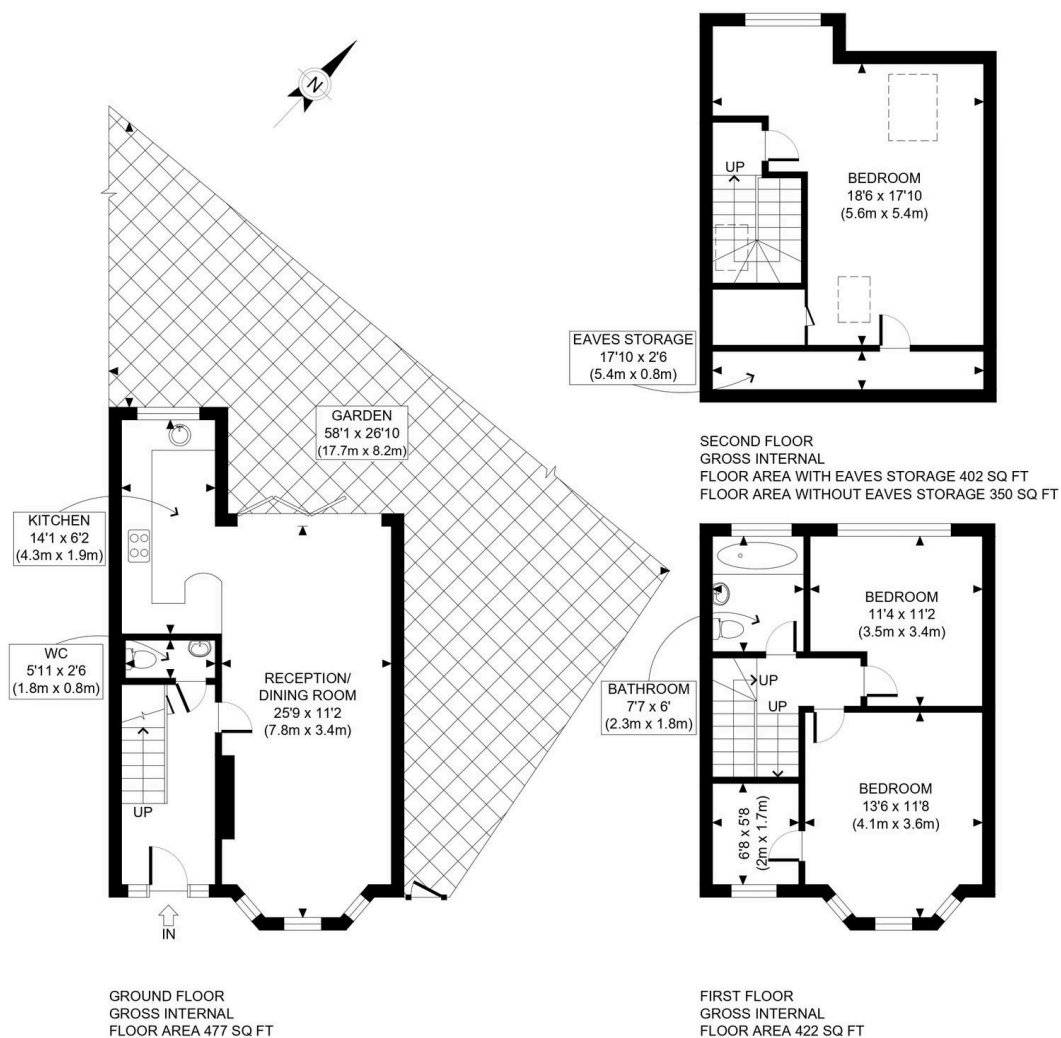
Council Tax band: E

Tenure: Freehold

EPC Energy Efficiency Rating: B

EPC Environmental Impact Rating: B

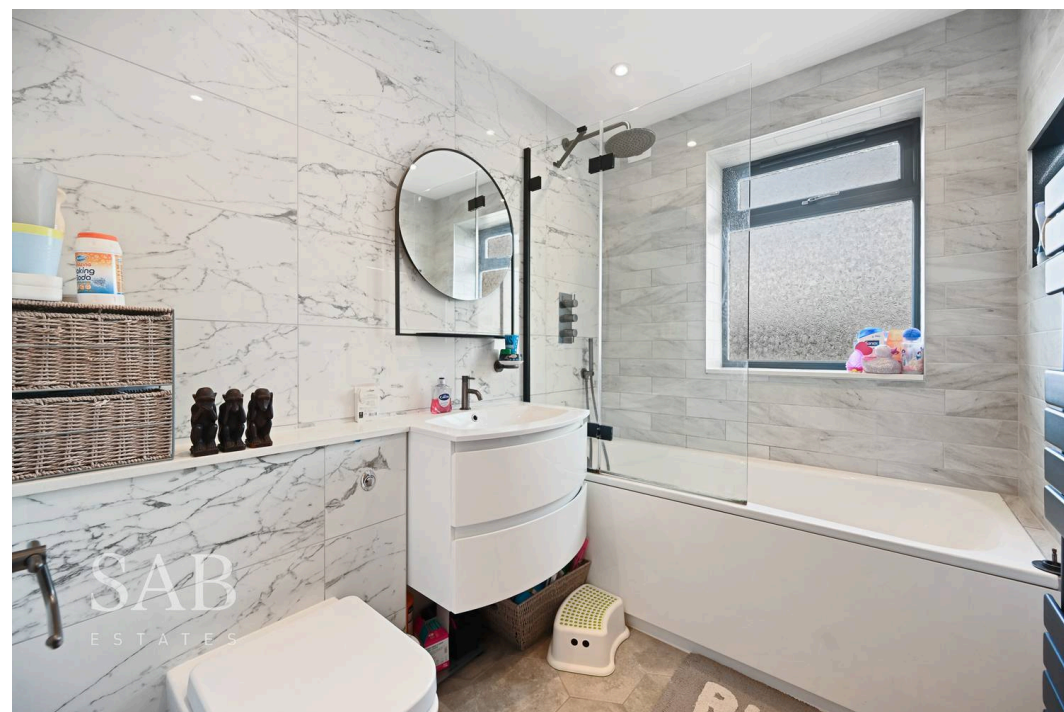


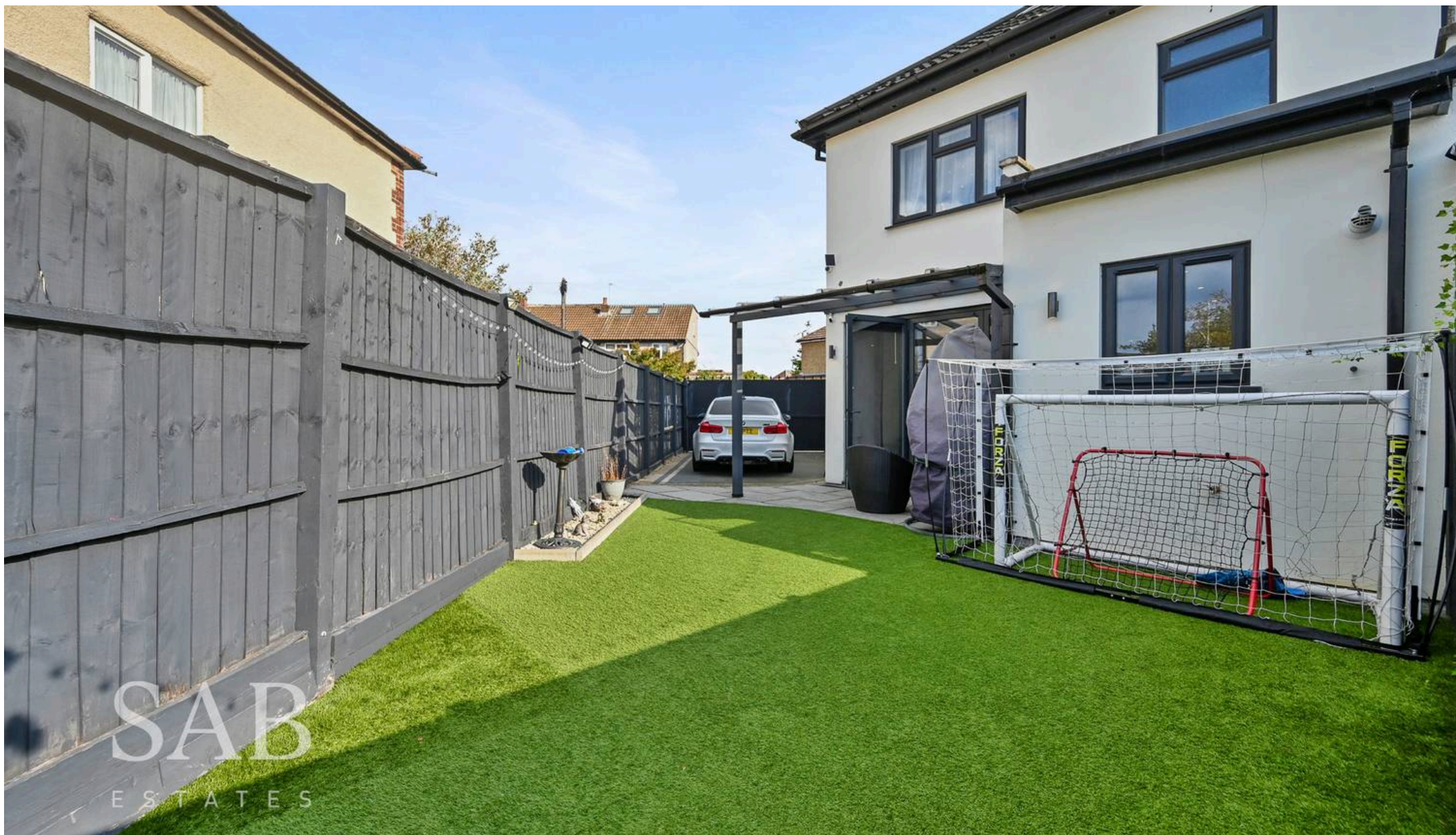


APPROX. GROSS INTERNAL FLOOR AREA WITH EAVES STORAGE: 1301 SQ FT/ 121 SQM
APPROX. GROSS INTERNAL FLOOR AREA WITHOUT EAVES STORAGE: 1249 SQ FT/ 116 SQM

PROPERTY PHOTO PLANS.CO.UK
ONE STOP SHOP FOR PROPERTY MARKETING

This plan is for illustrative purposes only and should be used as such by any prospective client. Whilst every attempt has been made to ensure the accuracy of the Floor Plan contained here, measurements of the doors, windows, rooms and any other items are approximate and no responsibility is taken for any errors, omissions, or misstatement. The services, systems and appliances shown have not been tested and no guarantee as to the operability or efficiency can be given.





SAB Estates

236-238 Ruislip Road, Greenford - UB6 9RS

020 8575 2929 • info@sabestates.com • www.sabestates.com/