



Lonsdale Road, Southall
£570,000

SAB
ESTATES



Lonsdale Road

Southall

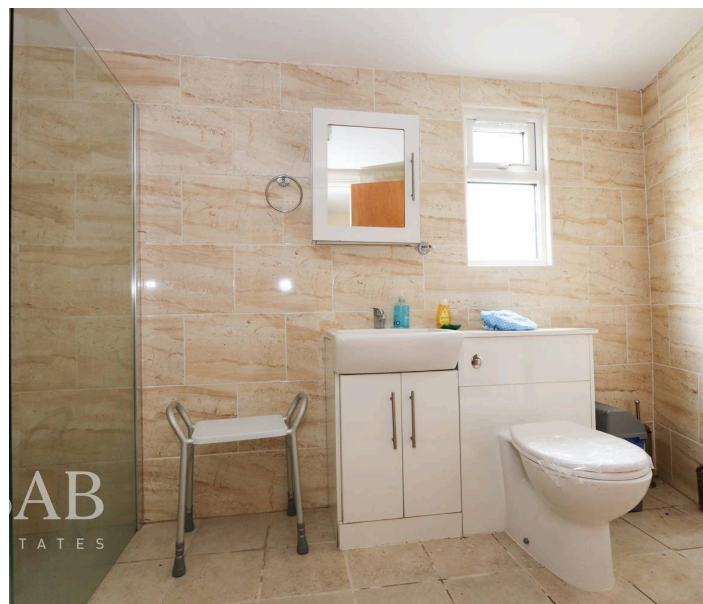
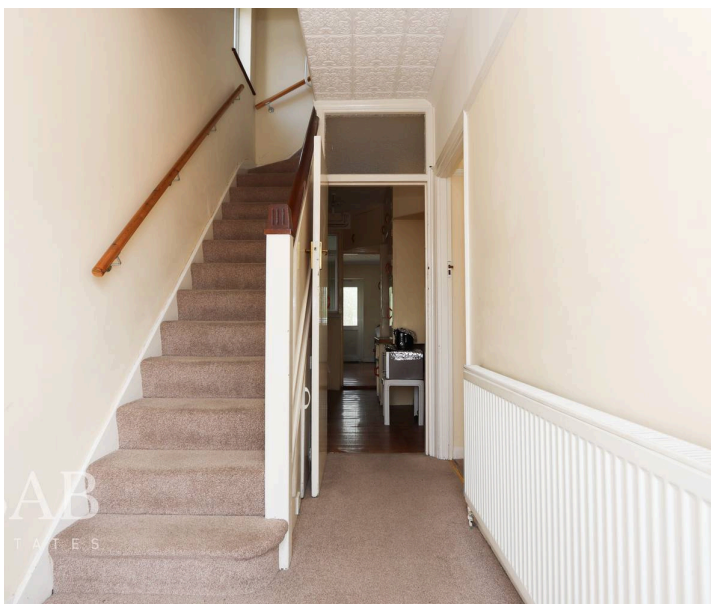
- Freehold
- Chain Free
- Private Rear Garden
- Quiet Cul-de-sac
- High Rental Demand – Strong Investment Potential
- Close to Amenities

Council Tax band: D

Tenure: Freehold

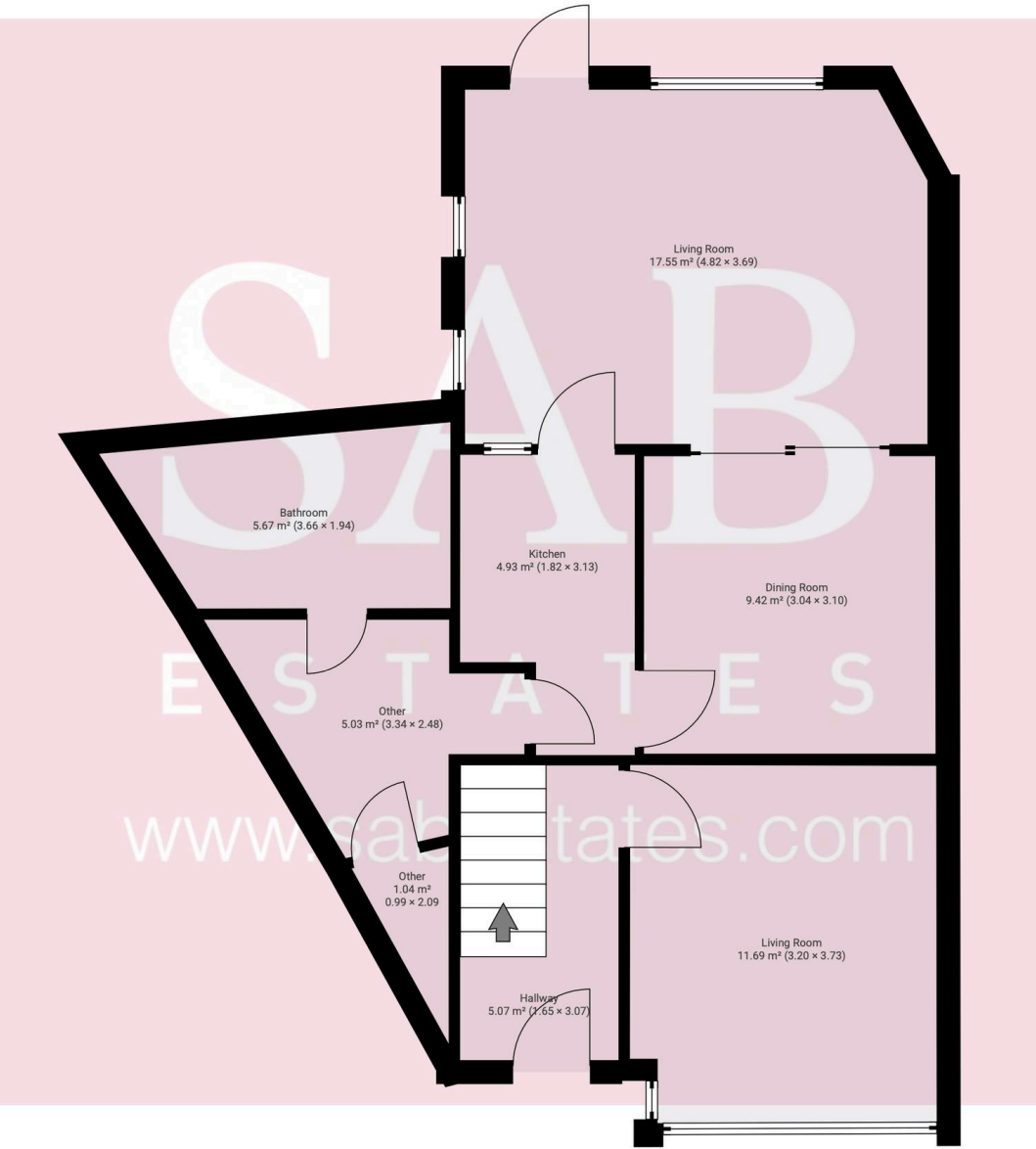
EPC Energy Efficiency Rating: D

EPC Environmental Impact Rating: D

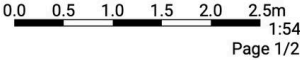


▼ Ground Floor

TOTAL AREA: 60.34 m² • LIVING AREA: 60.34 m² • ROOMS: 8

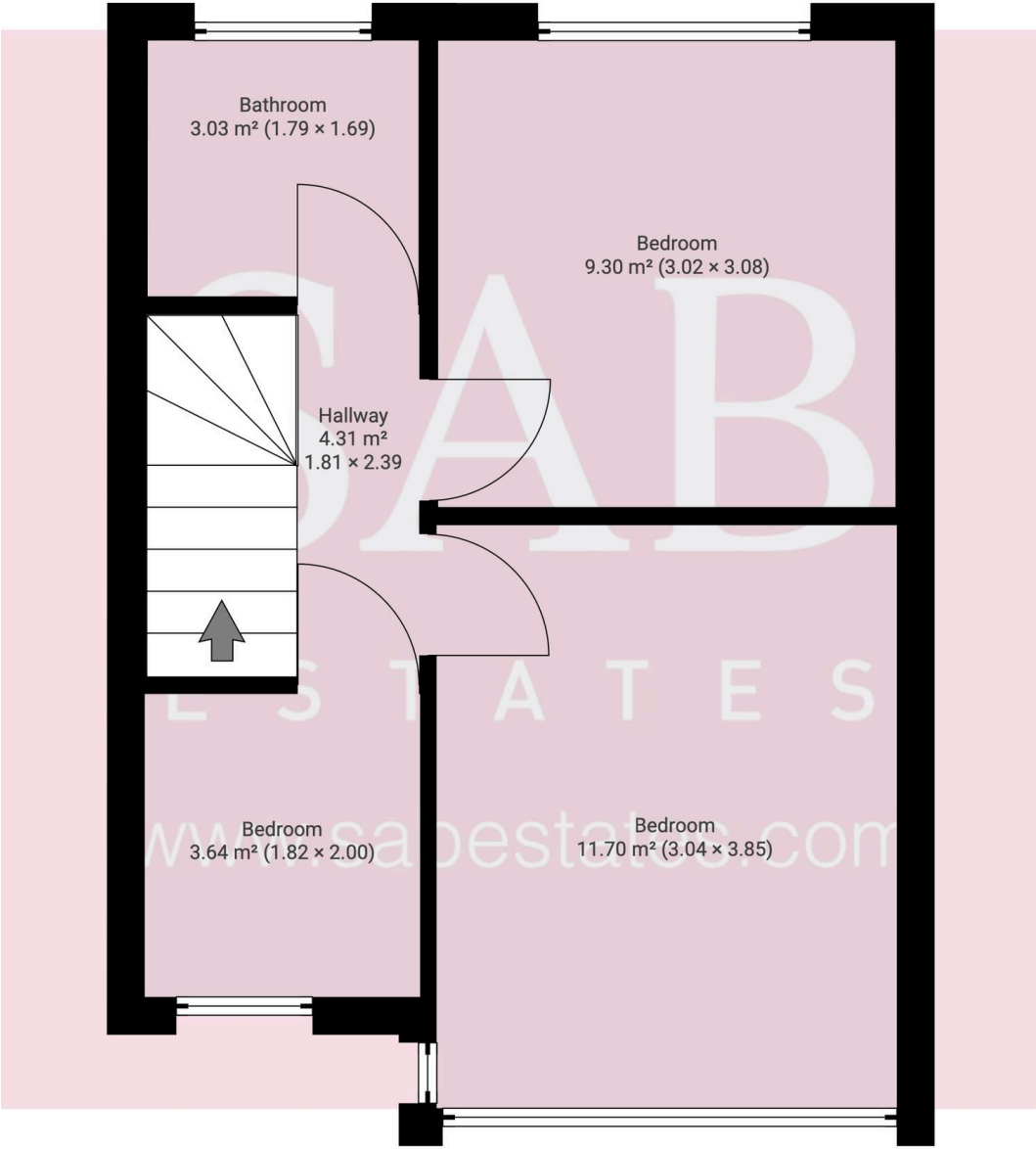


THIS FLOORPLAN IS PROVIDED WITHOUT WARRANTY OF ANY KIND. SENSOPIA DISCLAIMS ANY WARRANTY INCLUDING, WITHOUT LIMITATION, SATISFACTORY QUALITY OR ACCURACY OF DIMENSIONS.

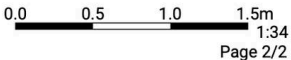


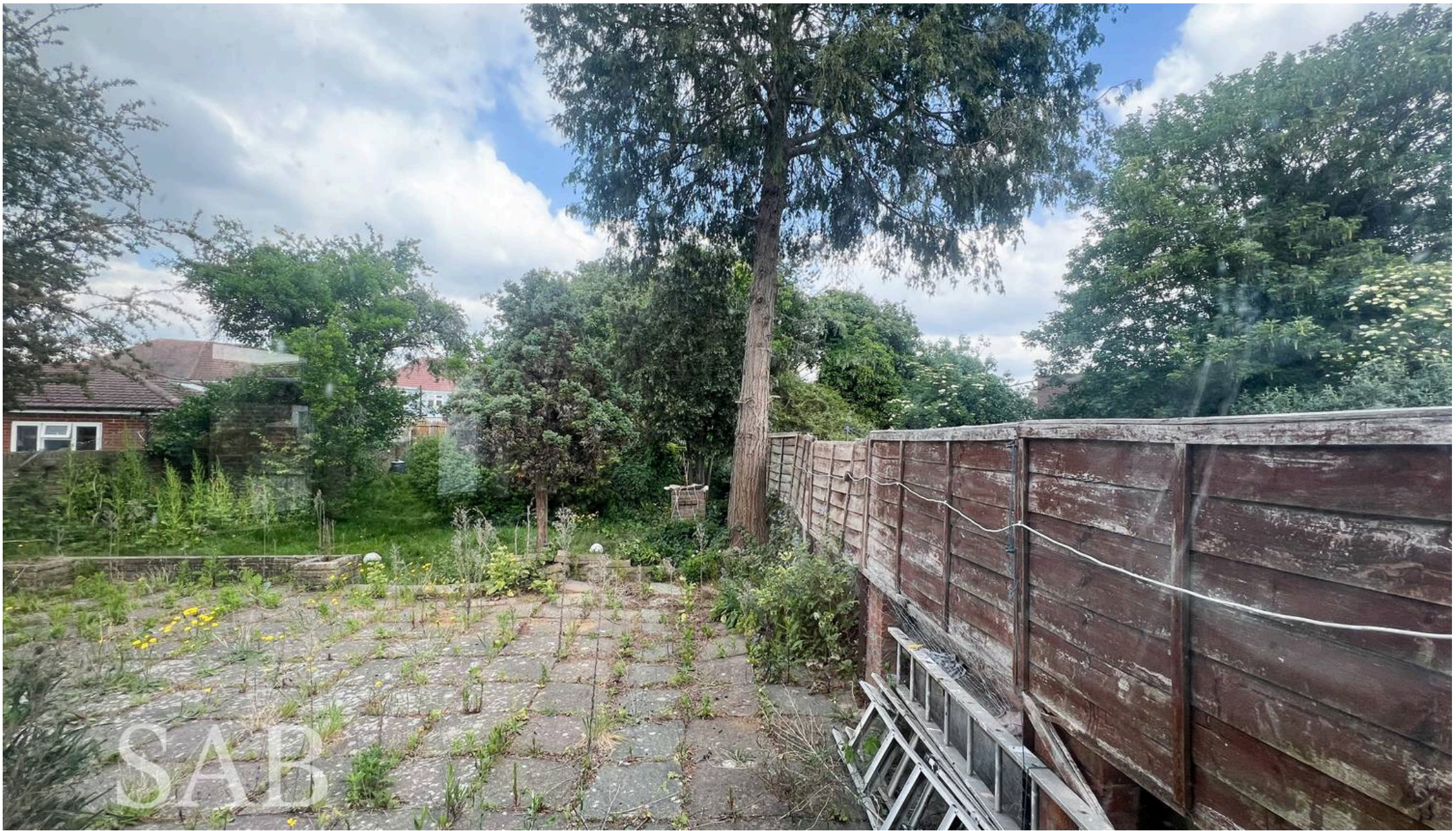
▼ 1st Floor

TOTAL AREA: 31.96 m² • LIVING AREA: 31.96 m² • ROOMS: 5



THIS FLOORPLAN IS PROVIDED WITHOUT WARRANTY OF ANY KIND. SENSOPIA DISCLAIMS ANY WARRANTY INCLUDING, WITHOUT LIMITATION, SATISFACTORY QUALITY OR ACCURACY OF DIMENSIONS.





SAB Estates

236-238 Ruislip Road, Greenford - UB6 9RS

020 8575 2929 • info@sabestates.com • www.sabestates.com/