

**Refurbishment
Works
Now Complete**



Autumn Park

Industrial Estate

Dysart Road • Grantham • Lincolnshire • NG31 7EU

**Industrial / workshop
units and secure
storage**

Available Now



**Click here to
view the video
of the estate**

TO LET



Why choose Autumn Park Industrial Estate

Autumn Park Industrial Estate offers any business requiring industrial premises a prime and central location right in the heart of the market town of Grantham in Lincolnshire. Within easy reach of all major roads such as the A1, A52, and the A607, and the East Coast Mainline station, we are perfectly located to allow your industrial business to develop and connect.

We can offer various sized industrial units and engineering workshops, along with business meeting and presentation facilities at our business centre, helping your business to grow, develop, and present itself professionally.

Benefits of locating your industrial business here include:

- Easy access to A52/ A1/A607
- 3 minute drive or 12 minute walk from East Coast mainline station
- Units suitable for manufacturing and engineering industries
- Suitable for small start-ups through to large scale businesses
- Storage facilities – subject to availability
- Development opportunities available



Location

The central location makes Autumn Park Industrial Estate the perfect hub for businesses in and around Grantham and Lincolnshire. Just minutes away from the East Coast mainline station and the A1, A52 and the A607.

	Distance (miles)	Time
Melton Mowbray	16	27 mins
Nottingham	24	42 mins
Peterborough	36	44 mins
Derby	41	1 hr 2 mins
Leicester	42	53 mins
Northampton	66	1 hr 25
Sheffield	68	1 hr 18 mins
Birmingham	74	1 hr 34 mins





Unit 18

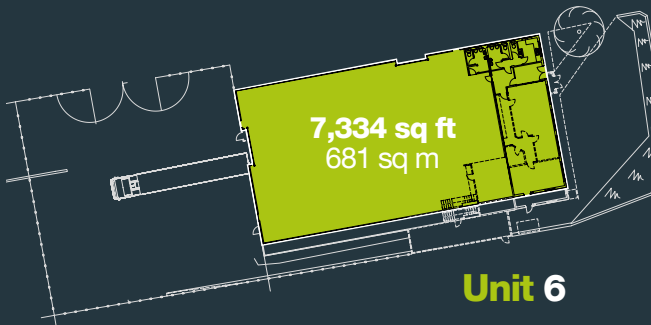
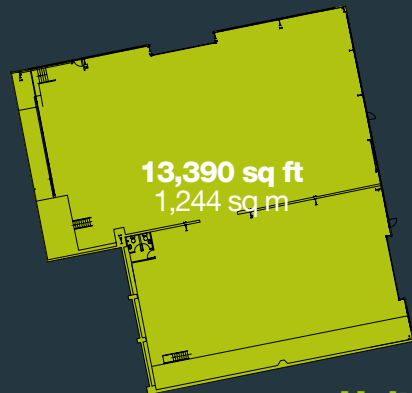
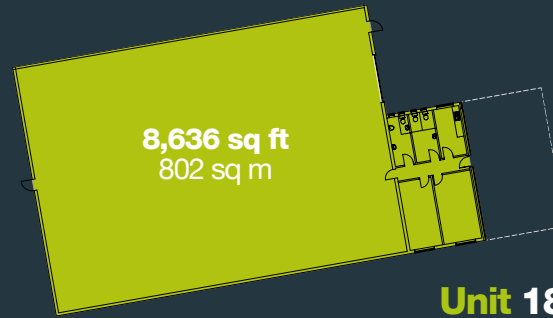
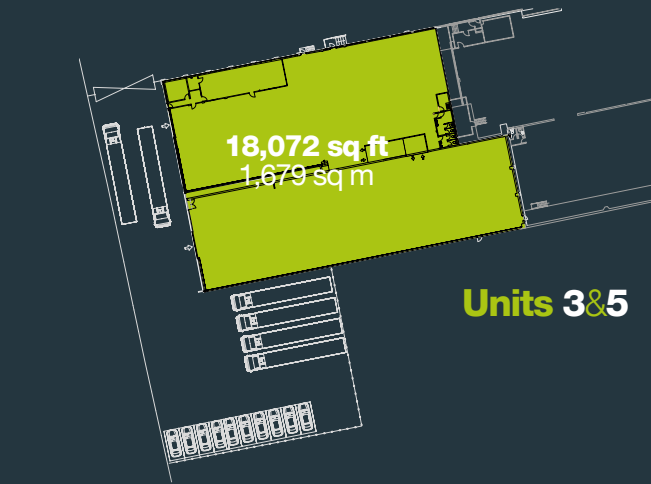
Looking for a new or additional industrial building or factory space for your business?

Autumn Park Industrial Estate is the perfect location for your commercial business to develop and grow.

Availability

UNIT	Size (Sq Ft)	Size (Sq M)	UNIT	Size (Sq Ft)	Size (Sq M)
4	13,390	1,243.97	6	7,334	681.35
3	8,778	815.50	18	8,636	802.31
5	9,306	864.56	22	7,197	668.62

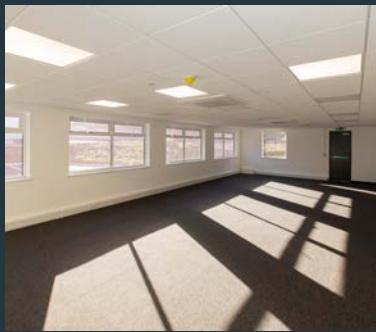
Compounds 0.27 Acres



04



UNIT 6



AUTUMN PARK INDUSTRIAL ESTATE
DYSART ROAD • GRANTHAM
LINCOLNSHIRE • NG31 7EU

UNIT 5



UNIT 18



UNIT 22



UNIT 3





Autumn Park

Key Refurbishment Specification

Refurbishment specification includes (subject to unit):

- New steel profile cladding to roof and elevations
- New LED warehouse and office lighting
- New electrically operated roller shutter doors
- Newly decorated warehouses
- Newly refurbished offices
- including air conditioning or new electrical heating system,
- New kitchenettes and WC's
- Dedicated secure yards to units 3/5 and 6
- Resurfacing or estate roads, parking and secure open storage compounds

Exact works being undertaken for the available units can be confirmed via the marketing agents.

Terms

Units are available To Let for a term of years to be agreed, for further information or to view please contact the joint letting agents.

Business Rates

Interested parties are advised to make enquiries with South Kesteven District Council.

EPC

EPC's are available on request.

VAT

VAT will be charged at the prevailing rate.

Estate Charge

An estate charge will be levied for the upkeep and maintenance of the estate.

AUTUMN PARK INDUSTRIAL ESTATE
DYSART ROAD • GRANTHAM
LINCOLNSHIRE • NG31 7EU

Contact

For information on current availability please contact the joint agents:



Brodie Faint

bfaint@phillipssutton.co.uk

0116 216 5144

www.phillipssutton.co.uk



Rob Maxey

rmaxey@heb.co.uk

07967 603 091

Will Torr

wtorr@heb.co.uk

07866 716 974

Misrepresentation Act, 1967. Phillips Sutton Associates & Wood Moore & Co for themselves and for the vendors or lessors of this property whose agents they are given notice that: (i) the particulars are set out as a general outline only for the guidance of intended purchasers or lessees, and do not constitute part of; an offer or contract; (ii) all descriptions, dimensions, reference to condition and necessary permissions for use and occupation, and other details given without responsibility and any intending purchasers or tenants should not rely on them as statements or representations of fact but must satisfy them by inspection or otherwise as to the correctness of each of them; (iii) no person in the employment of Phillips Sutton Associates & Wood Moore & Co has any authority to make or give any representation of warranty whatever in relation to this property. December 2023. carve-design.co.uk 15488/18