

44 Quay Central
Liverpool
L3 1DL



44 Quay Central

£195,195

Full Description

Introducing Quay Central – A Premier Investment Opportunity

We are excited to present Quay Central, a high-specification off-plan development in the heart of Liverpool Waters. This exceptional new-build project is located within Central Docks, the future cultural and leisure hub of Liverpool's transformative £5.5 billion regeneration initiative. Combining contemporary living with the city's rich industrial heritage, Quay Central offers a unique opportunity to invest in one of Liverpool's most dynamic and evolving neighbourhoods. Don't miss out – call today!

Designed to reflect the area's historic character, the building's exterior features a warehouse-inspired aesthetic that fits seamlessly into its surroundings. Inside, every apartment has been thoughtfully designed to offer modern comfort and style. High-quality porcelain tiles, deluxe bathroom fittings, and spacious layouts define the bathroom and en-suite facilities, with an emphasis on both practicality and elegance. The bedrooms are equally impressive, featuring integrated wardrobes with shelving and hanging rails, along with plush carpet flooring for a luxurious finish. Living areas are enhanced by stylish vinyl plank flooring, while kitchens are equipped with premium appliances, including an integrated oven, hob, and dishwasher, alongside freestanding fridge-freezers. Elegant stone-style worktops and LED lighting add a contemporary edge, ensuring a high-specification finish throughout.

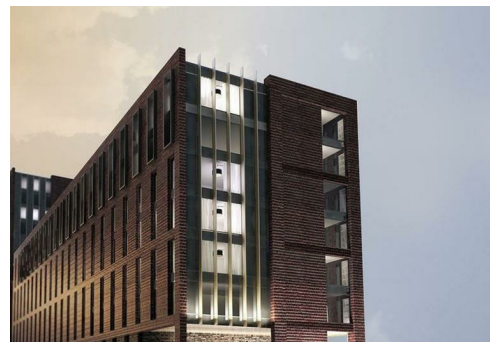
Quay Central is perfectly situated at the northern edge of Liverpool City Centre, adjacent to the historic Waterloo Docks. With stunning waterfront views over the River Mersey and just a short walk from some of Liverpool's best bars and restaurants, the development offers the perfect blend of convenience and lifestyle. As part of Liverpool Waters, this location is undergoing extensive redevelopment, making it a key gateway into the new Central Docks neighbourhood. The project is below market value and offers projected yields of 7%, making it an outstanding investment opportunity in a thriving city. Don't wait – call us today to secure your place in this landmark development!

Local Authority

Liverpool City Council

Council Tax Band B

EPC Rating



Contact

0161 470 1184

info@eliterealtyinvest.co.uk