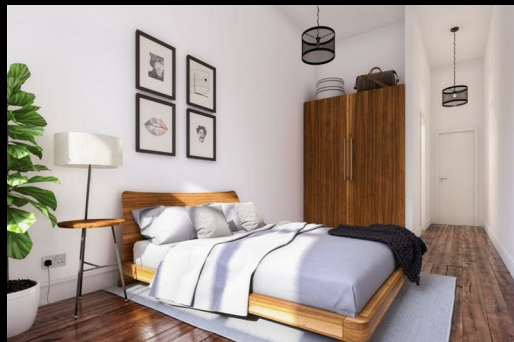


53 Marshall Street  
Manchester  
M4 5FU



# 53 Marshall Street

## £199,000

### Full Description

The Cartwright is an elegantly converted residence situated at the intersection of Manchester's vibrant NOMA and New Cross neighbourhoods. This development blends the building's rich heritage with luxurious contemporary interiors, offering a unique opportunity to invest in a piece of Manchester's history.

Located in the heart of Manchester's creative district, the Northern Quarter, The Cartwright is just a 5-minute walk from the city's Central Business District and equally close to both Manchester Victoria and Manchester Piccadilly stations. With only 14 exclusive units, this boutique development offers a rare investment opportunity.

### Investment Overview:

6% Projected Yields

Only 20% Deposit

City Centre Location

Exclusive development with just 14 units

Contemporary Specification

Northern Quarter – Manchester's vibrant creative hub

10-minute walk to Piccadilly Station

10-minute walk to Piccadilly Gardens & Arndale Shopping Centre

### Why invest in Manchester?

Manchester is the UK's 2nd most popular city.

According to Manchester City Council, the Manchester economy grows on average by 3.6% annually.

With a forecasted 15.4% predicted rental growth in Manchester by 2026, this is an excellent opportunity for investors seeking long-term returns in one of the UK's fastest-growing property markets.

Contact us today for more information and to receive the full investment overview.

### Local Authority

### Council Tax Band B

### EPC Rating

### Contact

0161 470 1184

[info@eliterealtyinvest.co.uk](mailto:info@eliterealtyinvest.co.uk)