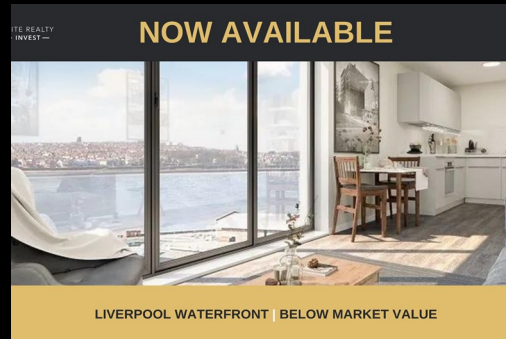


# 44 Quay Central Liverpool L3 1DL



# 44 Quay Central

## £130,950

### Full Description

We are excited to introduce Quay Central, a premium off-plan development situated in the heart of Liverpool Waters' emerging cultural and leisure district, Central Docks. This new-build combines high-specification finishes with a striking warehouse-inspired exterior that pays homage to Liverpool's industrial heritage.

Key features include spacious bedrooms with integrated wardrobes, deluxe carpet flooring, and luxurious bathrooms featuring high-quality porcelain tiles. Kitchens are fully equipped with premium appliances, stone-style worktops, and recessed LED lighting. Each apartment also benefits from convenient utility rooms with washer/dryer appliances.

### Investment Highlights:

Prime location within the £5.5 billion Liverpool Waters regeneration

Stunning waterfront views overlooking the River Mersey

Central city location near top bars, restaurants, and amenities

Below market value pricing

Projected rental yields of 7%

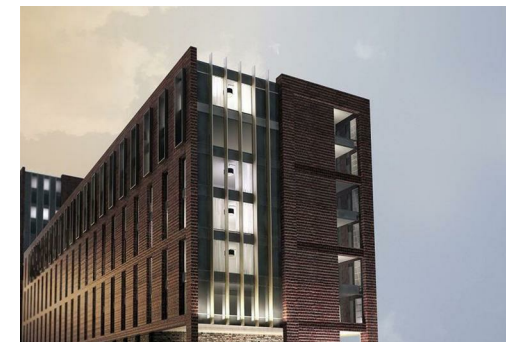
Don't miss this exceptional opportunity - contact us today to secure your investment.

### Local Authority

Liverpool City Council

### Council Tax Band C

### EPC Rating



### Contact

0161 470 1184

[info@eliterealtyinvest.co.uk](mailto:info@eliterealtyinvest.co.uk)

