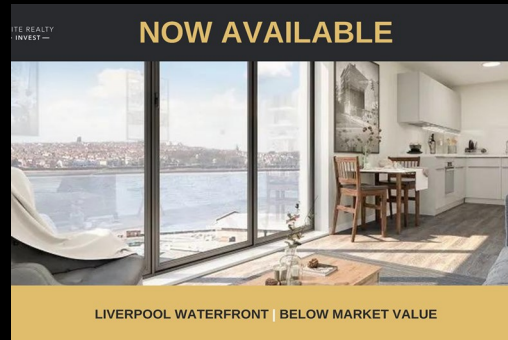


44 Quay Central
Liverpool
L3 1DL



44 Quay Central

£135,000

Full Description

We are thrilled to bring this off plan development to the market place. Quay Central is a high-specification new-build development located in a core part of Liverpool Water's. **DON'T MISS OUT! CALL TODAY!**

We are thrilled to bring this off plan development to the market place. Quay Central is a high-specification, new-build development located in a core part of Liverpool Water's future cultural and leisure hub – Central Docks. Reflecting Liverpool's industrious heritage, the building's exteriors exude a warehouse aesthetic to fit in with the area's ambience.

- High quality fixtures and fittings.
- Spacious bedrooms.
- High quality porcelain floor and wall bathroom tiles.
- Integrated wardrobe storage to all bedrooms with internal shelving and hanging rail facilities.
- Deluxe carpet flooring to all bedrooms.
- All kitchens are fully equipped with high quality appliances; integrated oven with hob and cabinet fitted extractor hood, integrated full size dishwasher and free standing 50/50 fridge freezer.
- Washer/dryer appliance to all apartment's utility rooms.
- Overhead cabinet recessed LED strip lighting in all kitchens.
- Stone-style kitchen worktop with matching splash-back.

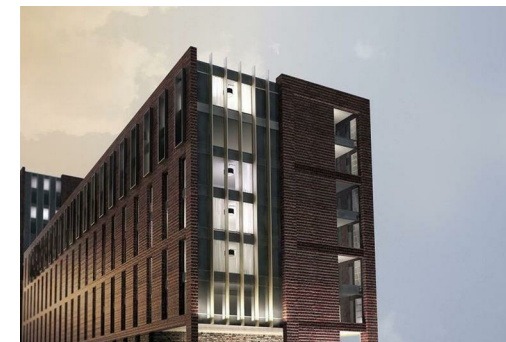
Investment Overview: Central to the ?5.5 Billion 'Liverpool Waters' regeneration project Stunning waterfront views over the River Mersey City centre location Short walk to some of Liverpool's top bars and restaurants Below market value Projected yields of 7% rental income

Local Authority

Liverpool City Council

Council Tax Band C

EPC Rating



Contact

0161 470 1184

info@eliterealtyinvest.co.uk

