

44 Quay Central  
Liverpool  
L3 1DL



# 44 Quay Central

## £130,000

### Full Description

We are pleased to present Quay Central, a premium off-plan development in the heart of Liverpool Waters. This high-specification new-build is set within Central Docks, the city's future cultural and leisure hub. Designed to reflect Liverpool's industrial heritage, the development combines modern living with a warehouse-style aesthetic.

### Investment Highlights:

Part of the £5.5 billion Liverpool Waters regeneration project  
Stunning waterfront views over the River Mersey  
Prime city centre location, minutes from top bars and restaurants  
Below market value  
Projected rental yields of 7%

### Development Features:

High-specification bathrooms and en-suite shower rooms  
Spacious master bedrooms with built-in wardrobes  
Deluxe carpeted bedrooms and premium flooring throughout  
Fully fitted kitchens with integrated high-end appliances  
Utility rooms with washer/dryer included  
Contemporary LED lighting and stone-style kitchen worktops

### Location Overview:

Quay Central sits on the northern edge of Liverpool city centre, adjacent to the historic Waterloo Docks. As part of the extensive Liverpool Waters redevelopment, the area is undergoing a dramatic transformation, offering investors the chance to secure property in one of the city's most exciting regeneration zones.

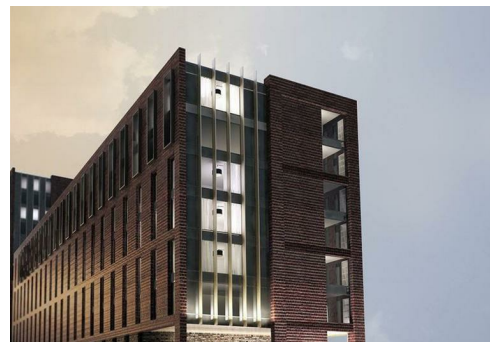
Don't miss out on this exclusive investment opportunity - contact us today!

### Local Authority

Liverpool City Council

### Council Tax Band C

### EPC Rating



### Contact

0161 470 1184

[info@eliterealtyinvest.co.uk](mailto:info@eliterealtyinvest.co.uk)