

43 Newton Street  
Manchester  
M1 1EE



# 43 Newton Street

## £280,000

### Full Description

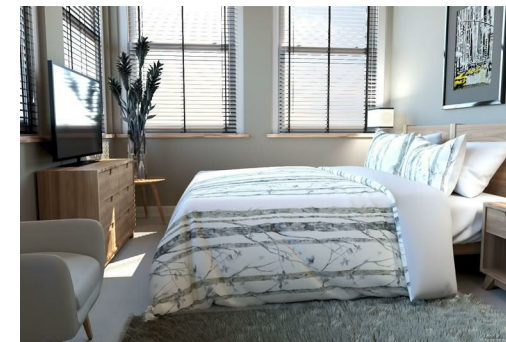
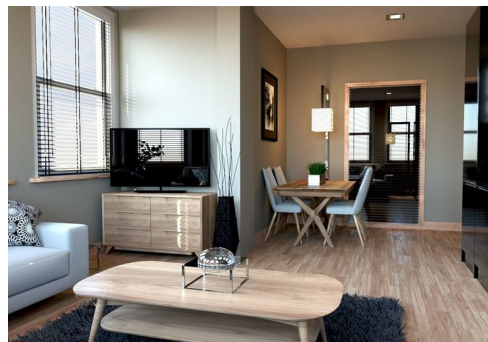
This two-bedroom apartment is nearing completion and will be ready to go. Manchester city centre - 6% NET yields - below market value.

We are delighted to bring to the market this fabulous property. This two-bedroom apartment is nearing completion and will be ready to go in the coming weeks. Situated in Manchester city centre, these apartments are predicted to achieve 6% NET yields. A long-standing frustration with many city centre residents is the lack of equally sized internal accommodation, especially for tenants sharing, the mainstay of the private rental market. The two-bedroom apartments will provide the solution. All apartments have equal sized double bedrooms, each with their own en-suite bathroom; a perfect design solution for tenants sharing accommodation. No longer will tenants have to compromise or squabble over a large master bedroom & small en-suite verses small second bedroom & a large disconnected bathroom! Furthermore, the development is brand new, with the combination of the latest design, fixtures and fittings these apartments are certain to appeal to professional tenants on mass. Investment Overview: • 6.5% projected yields • M1 city centre location • Hottest regional rental market • Professional tenants • Rare & unique opportunity • Contemporary specification • Concierge service • Gymnasium for residents • Ground floor coffee lounge and offices • Fabulous views • Rooftop garden • Northern Quarter - the city's most vibrant area • Piccadilly Station - 10 minute walk distance • Piccadilly Gardens & Arndale shopping centre less than a 10 minute walk Information packs, floor plans and financial breakdowns are available on request.

Local Authority

Council Tax Band D

EPC Rating



### Contact

0161 470 1184

info@eliterealtyinvest.co.uk

