



ashberryhomes.co.uk

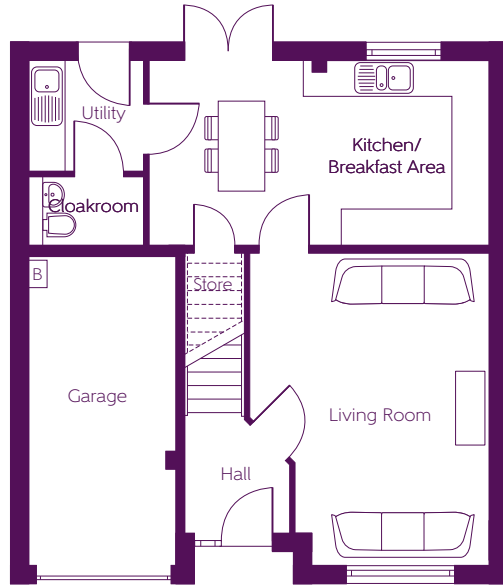
The Balmore

4 BEDROOM HOME

Ashberry
Homes

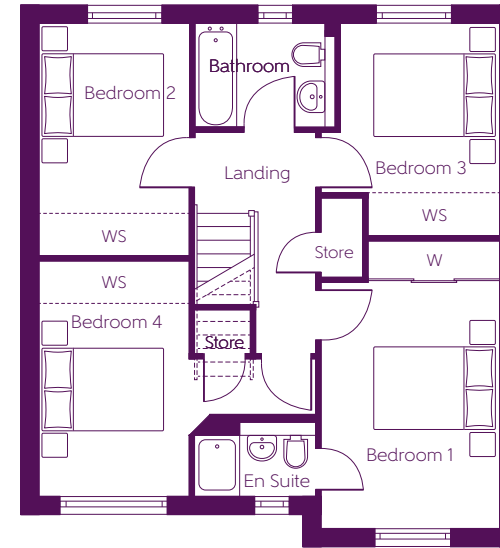
The Balmore

4 BEDROOM HOME



Ground Floor

Kitchen/Breakfast Area	5.67m x 3.09m	18'7" x 10'2"
Living Room	5.21m x 3.97m (max) (max)	17'1" x 13'0" (max) (max)



First Floor

Bedroom 1	4.10m x 2.94m (max)	13'6" x 9'8" (max)
Bedroom 2	3.89m x 2.51m	12'9" x 8'3"
Bedroom 3	3.53m x 2.94m (max) (max)	11'7" x 9'8" (max) (max)
Bedroom 4	3.90m x 2.51m	12'10" x 8'3"

WS - Optional fitted wardrobe space W - Fitted wardrobe B - Boiler ---- - Reduced head height

Furniture arrangements are for illustrative purposes only. Items are not included, nor to scale.

The items shown in this key may be subject to change, and positions could vary from those indicated on this floorplan. Please refer to Sales Advisor for details of your selected plot. Computer generated image shown overleaf. External finishes, landscaping and configuration may vary from plot to plot. Please refer to Sales Advisor for further details. All dimensions are approximate and should not be used for carpet sizes, appliance spaces or furniture. We operate a policy of continuous improvement and individual features such as kitchen and bathroom layouts, doors, windows, garages and elevational treatments may vary from time to time. Consequently these particulars should be treated as general guidance only and do not constitute a contract, part of a contract or a warranty.