



## Blocks 2, 3, 4 & 5

PLOTS 56 - 71,  
72 - 87, 88 - 103 & 104 - 119

---

2 BEDROOM APARTMENTS

[ashberrymhomes.co.uk](http://ashberrymhomes.co.uk)

**Ashberry**  
Homes

# Blocks 2, 3, 4 & 5

## 2 BEDROOM APARTMENTS



### Apartment E

Plots 56, 60, 64, 68, 72, 76, 80, 84, 88, 92, 96, 100, 104, 108, 112 & 116  
Please note plots 59, 63, 67, 71, 75, 79, 83, 87, 91, 95, 99, 103, 107, 111, 115 & 119 are handed. (Ground floor shown)

#### Kitchen/Living Area

3.61m x 6.89m 11'10" x 22'7"

#### Bedroom 1

2.80m x 3.16m (min) 9'2" x 10'4" (min)

#### Bedroom 2

3.27m x 2.88m (max) 10'9" x 9'5" (max)



### Apartment F

Plots 57, 61, 65, 69, 73, 77, 81, 85, 89, 93, 97, 101, 105, 109, 113 & 117  
Please note plots 58, 62, 66, 70, 74, 78, 82, 86, 90, 94, 98, 102, 106, 110, 114 & 118 are handed. (Ground floor shown)

#### Kitchen/Living Area

3.61m x 6.89m 11'10" x 22'7"

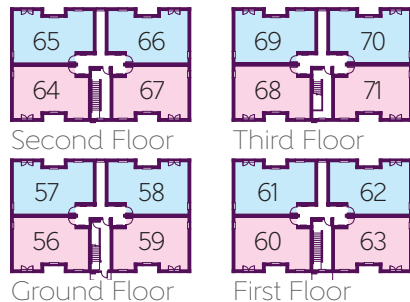
#### Bedroom 1

3.43m x 3.16m (min) 11'3" x 10'4" (min)

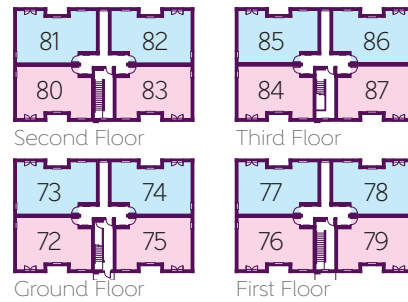
#### Bedroom 2

3.27m x 2.88m (max) 10'9" x 9'5" (max)

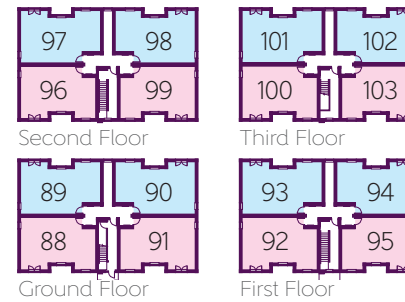
### Block 2



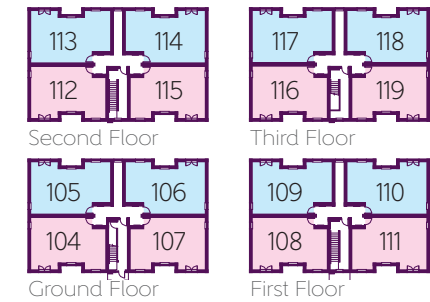
### Block 3



### Block 4



### Block 5



Furniture arrangements are for illustrative purposes only. Items are not included, nor to scale.

WS - Optional fitted wardrobe space B - Boiler

The items shown in this key may be subject to change, and positions could vary from those indicated on this floorplan. Please refer to Sales Advisor for details of your selected plot. Computer generated image shown overleaf. External finishes, landscaping and configuration may vary from plot to plot. Please refer to Sales Advisor for further details. All dimensions are approximate and should not be used for carpet sizes, appliance spaces or furniture. We operate a policy of continuous improvement and individual features such as kitchen and bathroom layouts, doors, windows, garages and elevational treatments may vary from time to time. Consequently these particulars should be treated as general guidance only and do not constitute a contract, part of a contract or a warranty. LU/CB/500/S00/D/01/B.