



Lyss Homes



## 5 Bumble House 387 Rotherhithe New Road, London, £365,000'

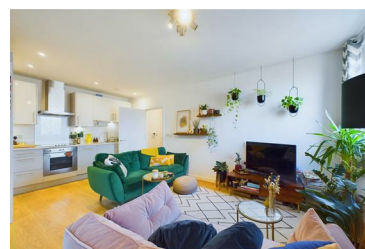


Welcome to Bumble House, a modern flat located on Rotherhithe New Road in a vibrant part of Bermondsey. This purpose-built residence offers a comfortable living space of 555 square feet, ideal for individuals or couples seeking a stylish urban retreat.

Situated on the third floor, this flat boasts a well-designed layout featuring one reception room, one bedroom, and a contemporary bathroom. The north-facing aspect allows for an abundance of natural light, creating a warm and inviting atmosphere throughout the home. One of the standout features of this property is the private balcony, where you can enjoy stunning views towards the iconic Shard and the bustling city skyline.

The flat is equipped with underfloor heating, ensuring a cosy environment during the cooler months. Residents will appreciate the convenience of having a range of local amenities within easy reach, making daily life both practical and enjoyable. Whether you are looking to explore nearby shops,

- One bedroom
- Large storage space
- North facing
- Underfloor heating
- Integrated appliances
- One bathroom
- Private balcony
- Stunning views towards The Shard and The City
- Fitted wardrobes
- Chain free



216 High Road Leytonstone, E11 3HU

Tel: 02080 505 452 Email: [info@lysshomes.co.uk](mailto:info@lysshomes.co.uk) [www.altosoftware.co.uk](http://www.altosoftware.co.uk)