



30 Richmond Terrace , New Street , Matlock, DE4 3DN
£975 pcm



- 3 Bedroom terraced house
- Recently refurbished to a high standard
- Modern fitted kitchen
- Set over 3 floors

- Parking
- Rear Yard
- Convenient town centre location
- EPC Rating C

Tel 01629 760899

Mobile 07977 136687

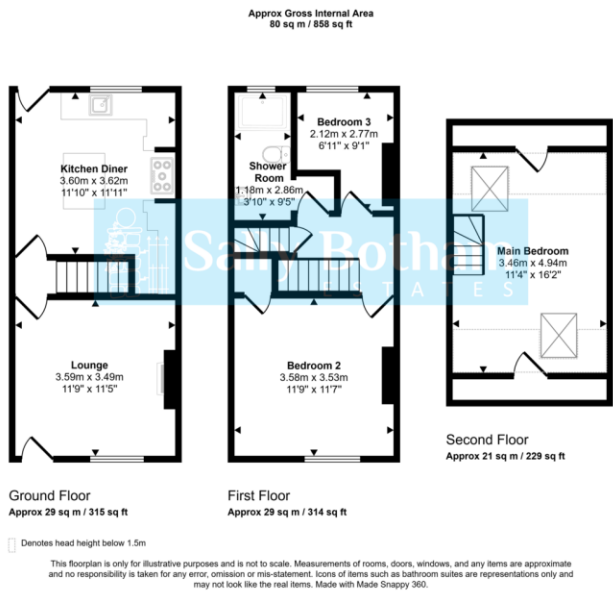
www.sallybotham.co.uk

30 Richmond Terrace , New Street , Matlock, DE4 3DN

Full details to follow.



DISCLAIMER: All measurements in these details are approximate. None of the fixed appliances or services have been tested and no warranty can be given to their condition. The deeds have not been inspected by the writers of these details. These particulars are produced in good faith with the approval of the vendor but they should not be relied upon as statements or representations of fact and they do not constitute any part of an offer or contract.



Score	Energy rating	Current	Potential
92+	A		
81-91	B		
69-80	C	74 C	86 B
55-68	D		
39-54	E		
21-38	F		
1-20	G		