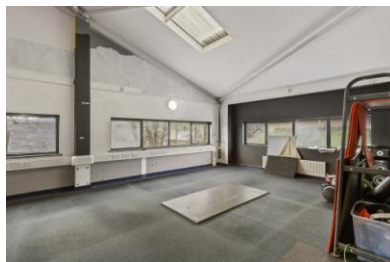




Unit 27, Molyneux Business Park Ltd, Whitworth Road, Darley Dale, Matlock, DE4 2HJ
£11,004 pa



- Commercial property to let.
- First floor.
- Shared facilities.
- Easy access from A6 and close to local amenities.
- Flexible lease terms.
- Allocated exclusive parking spaces.
- £917pcm
- EPC=B