

Greenhill House

90-93 Cowcross Street, London EC1M 6BH

Rental Options: Cat-A: **£58/sqft**
Fully-Fitted: **£68/sqft**
Fully-Managed: **£145/sqft**



One of Clerkenwell's leading examples of commercial Victorian architecture, built on an iron frame with brick facades and attractive original window detailing.

Only minutes-walk from Farringdon's Cross Rail, Thameslink and underground stations, the original brick and iron features of this historic commercial building combines light and charm with the modern benefits of London's best transport connections and buzzing local Clerkenwell amenities of bars, shops, restaurants and food markets.

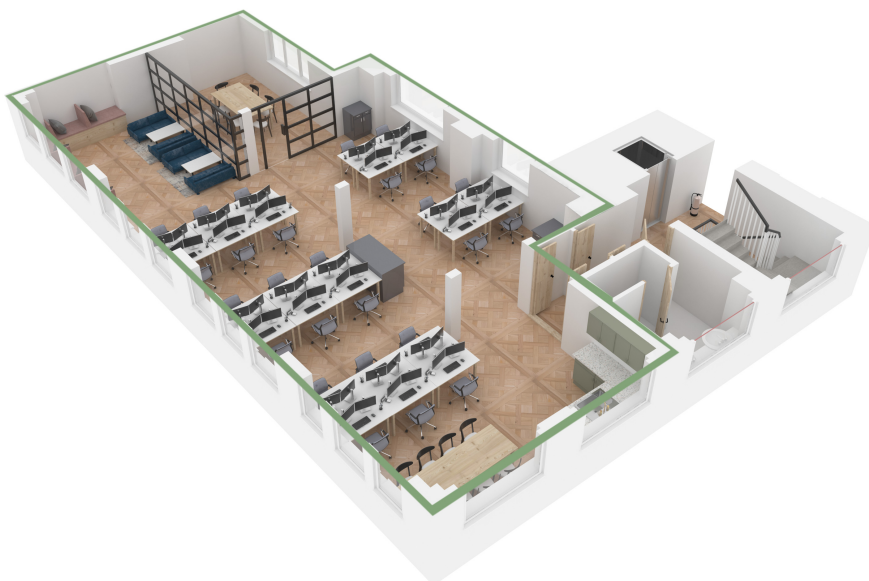
AXO IMAGE OF SUGGESTED OFFICE LAYOUT

Key Facts

Cat-A: **£58/sqft**
Fully-Fitted: **£68/sqft**
Fully-Managed: **£145/sqft**

UNIT SIZE: **1,399 sq ft**
DESKS: **12-18**
RENT: **From £6,762 pcm**

BUILDING SIZE: **15,455 sqft**
BUILDING FLOORS: **4**
UNIT: **2nd floor East**

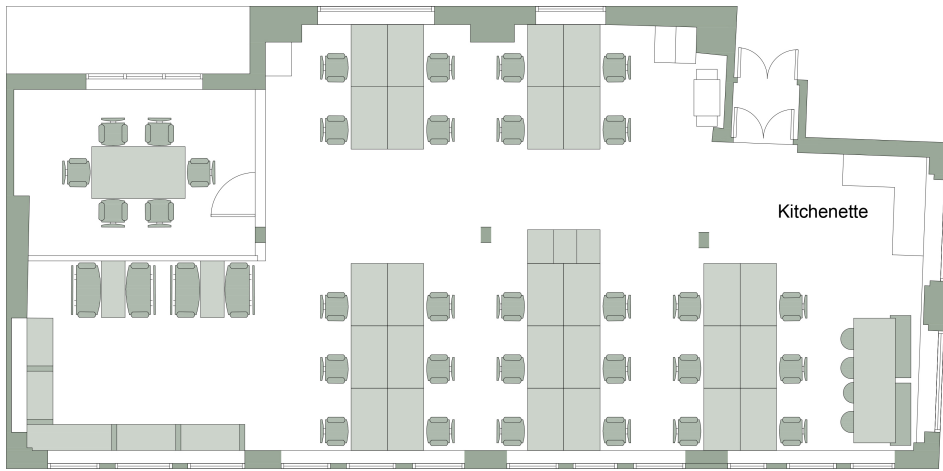


Highlights of your New Office:

- Your own private suite
- Workstations, kitchen, meeting room & informal break out area
- Personalised fit-out & furniture with your choice of configuration
- Comfort cooling and heating
- Historic architectural features
- Your own company branding in reception

Fully managed office package available separately

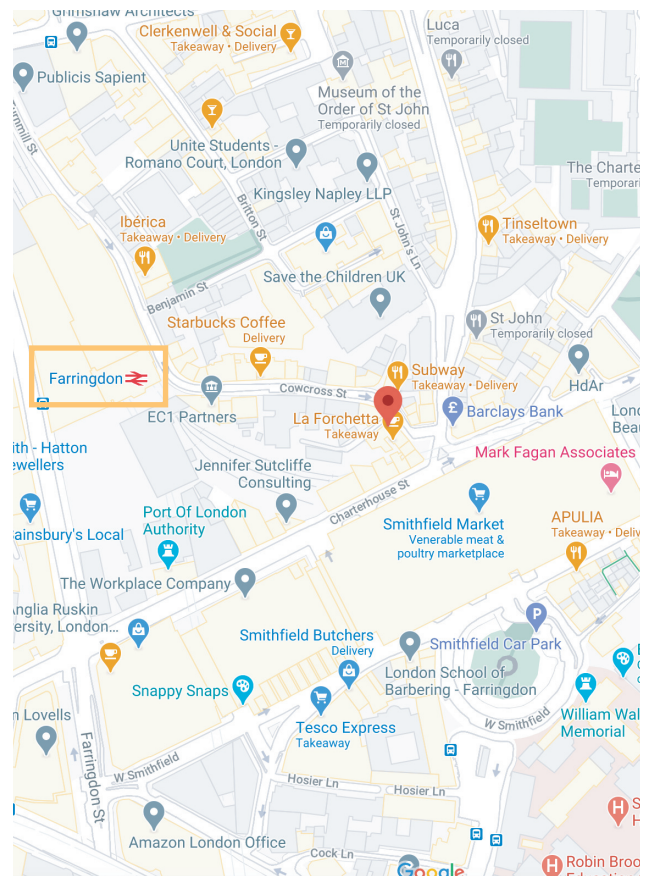
26 PERSON OFFICE
OTHER LAYOUTS AVAILABLE



Tailor-made, turn-key office solution giving you your own private suite, with your choice of layout, furniture and dedicated IT services.

What's included in the price:

Service	Cat-A	Fitted	Managed
Rent	✓	✓	✓
Rates			✓
Service Charge			✓
Fit Out & Furniture		✓	✓
Fibre Broadband (100mb)			✓
Utilities			✓
Mobile Door Entry	✓	✓	✓
Customer App	✓	✓	✓
Customer Services Manager			✓
24/7 Helpdesk			✓
Cleaning			✓
Consumer Supplies			✓
Tech Support			✓
Repairs & Maintenance			✓
Health & Safety			✓
Misc Items			✓
Rent/sqft	£58.00	£68.00	£145



Greenhill House
90-93 Cowcross Street
London
EC1M 6BH

TEL : 0207 930 5724

HELLO@GREENHILLHOUSE.ME