

Harling House

47-51 Great Suffolk Street SE1 0BS

Rental Options:

Fully-Managed: From £64,272 pcm



CGI image

A former warehouse in the heart of Southwark, with a commanding location at the junction of Union Street and Great Suffolk Street, featuring Gordon Ramsay's Bread Street Kitchen on part of the ground floor.

Harling House is located within two minutes-walk of Southwark underground and ten minutes from Waterloo, London Bridge and Blackfriars stations. The building is in the heart of London's thriving Southbank district, offering a wide variety of local amenities from bars, restaurants, coffee shops, galleries and London's famous Borough Market.

Key Facts

Fully-Managed:
From £64,272 pcm

UNIT SIZE: 4,169 sqft

BUILDING SIZE: 73,575 sqft

DESKS: 40 - 80 desks

BUILDING FLOORS : 5

RENT: From £64,272 pcm

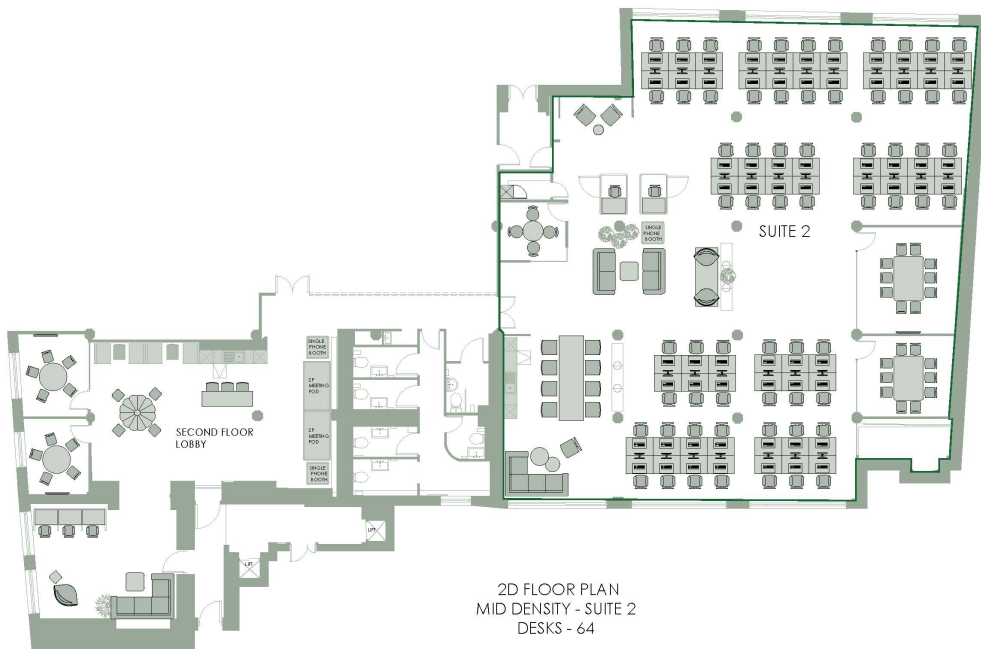
UNIT: 2nd floor East



AXO IMAGE OF SUGGESTED OFFICE LAYOUT

Highlights of your New Office:

- Own private unit
- Communal meeting rooms and break out spaces
- Workstations plus kitchen, meeting room and informal break out areas
- Personalised fit-out and furniture with your choice of configuration
- Excellent natural light
- Showers and bike storage
- Reception service



64 PERSON OFFICE
OTHER LAYOUTS AVAILABLE

Tailor-made, turn-key office solution giving you your own private suite, with your choice of layout, furniture and dedicated IT services.

What's included in the price:

Service	Managed
Rent	✓
Rates	✓
Service Charge	✓
Furniture & Fitout	✓
Fibre Broadband (100mb)	✓
Utilities	✓
Building Reception	✓
Customer App	✓
Customer Services Manager	✓
24/7 Helpdesk	✓
Cleaning	✓
Consumer Supplies	✓
Tech Support	✓
Repairs & Maintenance	✓
Health & Safety	✓
Misc Items	✓
Coffee machine	✓
Rent/pcm	£64,272

