

Metropolitan House

38-40 High Street
CR0 1YB Croydon

Rental Options: Cat-A: £22.50/sqft
Fully-Fitted: £26.00/sqft
Fully-Managed: POA



A modern building with an attractive Edwardian stone façade. In the heart of Croydon, the building benefits from some of the best transport connections, restaurants and local street markets.

Your business can make its new home in this authentic commercial building, re-imagined for modern working requirements. Videophone entry system, natural light and central atrium, preserve its nature with a modern twist.

Key Facts

Cat-A: £22.50/sqft
Fully-Fitted: £26.00/sqft
Fully-Managed: POA

UNIT SIZE: 1,244 sqft
DESKS: 12-30
RENT: From £2,333.00 pcm

BUILDING SIZE: 20,049 sqft
BUILDING FLOORS : 3
UNIT: 3rd FLOOR Suite 6

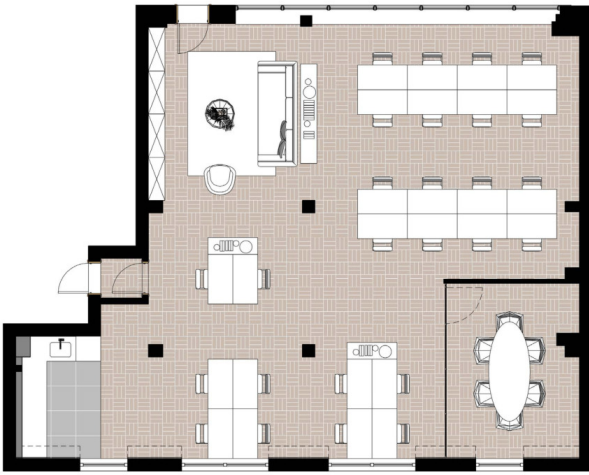
Highlights of your New Office:

- Own private floor
- Workstations plus kitchen, meeting rooms and informal break out area
- Personalised fit-out & furniture with your choice of configuration
- Comfort cooling and heating
- Excellent natural lights
- Bike storage
- Video Entryphone System

Fully managed office package available separately

AXO IMAGE OF
SUGGESTED OFFICE LAYOUT



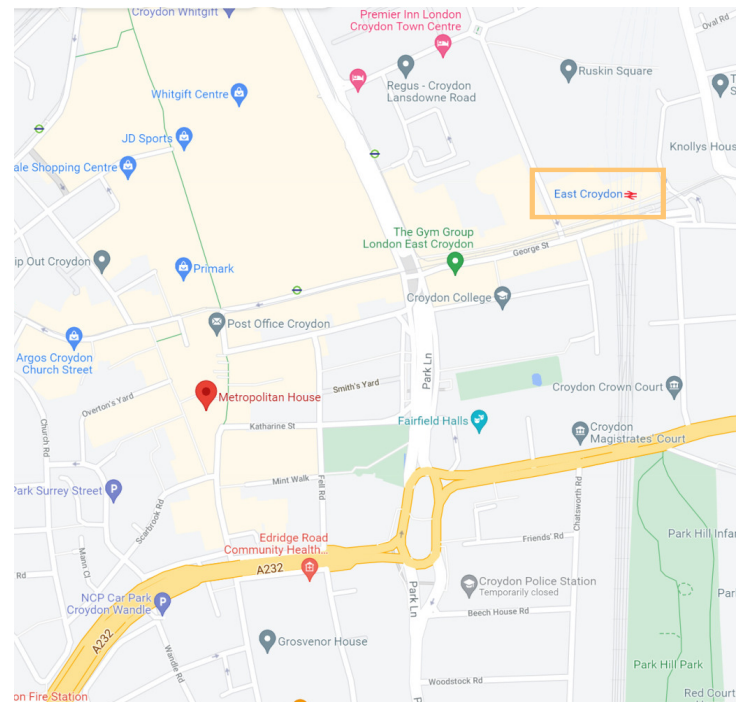


26 PERSON OFFICE
OTHER LAYOUTS AVAILABLE

Tailor-made, turn-key office solution giving you your own private suite, with your choice of layout, furniture and dedicated IT services.

What's included in the price:

Service	Cat-A	Fitted	Managed
Rent	✓	✓	✓
Rates			✓
Service Charge			✓
Fit Out & Furniture		✓	✓
Fibre Broadband (100mb)			✓
Utilities			✓
Bike rack	✓	✓	✓
Customer App	✓	✓	✓
Customer Services Manager			✓
24/7 Helpdesk			✓
Cleaning			✓
Consumer Supplies			✓
Tech Support			✓
Repairs & Maintenance			✓
Health & Safety			✓
Misc Items			✓
Rent/sqft	£22.50	£26.00	£POA



Metropolitan House,
38-40 High Street
CR0 1YB Croydon

TEL : 0207 930 5724

HELLO@METROPOLITANHOUSE.ME