



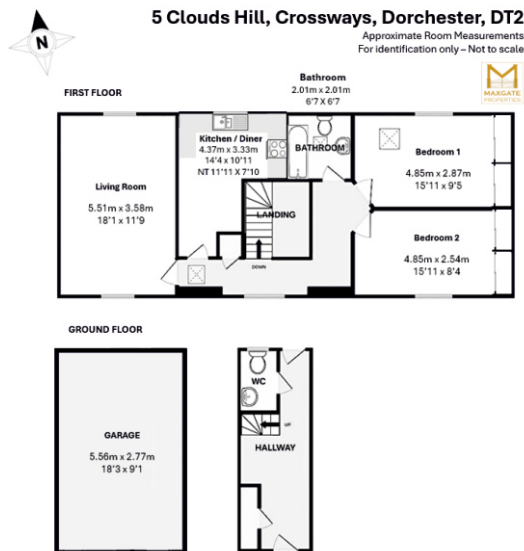
Clouds Hill, Crossways

£300,000

For Sale | 2 bedrooms | 2 bathrooms

Charming coach house perfectly positioned within this popular Clouds Hill development in Crossways.

- Two Double Bedrooms
- Parking and Garage
- Dual Aspect Living Room
- Enclosed Rear Garden



Description

A unique opportunity to acquire this charming coach house perfectly positioned within this popular Clouds Hill development in Crossways. This home benefits from well-appointed accommodation and is further enhanced with its own private garden with summer house, garage and parking.

The ground floor has a storage cupboard, cloakroom, and stairs to the first floor as well as access to the rear garden.

The first floor is a bright and welcoming space with a featured galleried landing with European Oak floor which also flows into the dual aspect sitting room with views towards farmland and woods. The kitchen/breakfast room has a range of base and eye level high gloss units with integrated appliances, four ring hob with cooker hood above, double oven, washer/dryer and dishwasher. Space for fridge freezer, tiled floor and space for table and chairs.

There are two double bedrooms serviced by a family bathroom with a tiled floor and underfloor heating, basin, WC and panel enclosed bath with shower over.

Externally to the front is a parking space and access to the garage which benefits from mains electricity and an up and over door. The rear garden has a large patio with lawn and charming summer house set in the corner. Pathways give access round both sides of the property.

This Coach House is detached and freehold but leases 3 of the four garages to neighbouring properties

Sitting Room 5.51m (18'1") x 3.58m (11'9")
Kitchen/Breakfast Room 4.37m (14'4") NT 11'11" x 3.33m (10'11") NT 7'10"
Bedroom 1 4.85m (15'11") x 2.54m (8'4") Irregular shape
Bedroom 2 4.85m (15'11") x 2.87m (9'5") Irregular shape
Bathroom 2.01m (6'7") x 2.01m (6'7")
Garage 5.56m (18'3") x 2.77m (9'1")

Council Tax Band - C

5 Clouds Hill
Crossways
DORCHESTER
DT2 8WJ

Energy rating
C

Valid until
8 May 2032

Certificate number
0445-3016-1205-7312-0204

