

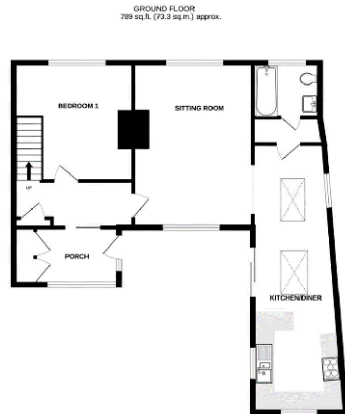


2, River View



£360,000

For Sale | 4 bedrooms | 2 bathrooms



Well presented 4 Bedroom Family Home on the eastern outskirts of Dorchester

- 4 Bedrooms
- Quiet Residential Area
- Ample Parking, Garage and Log Store
- Spacious Garden with Patio Area

Description

This 4 Bedroomed Semi-Detached Family home is situated in a quiet residential area on the eastern outskirts of Dorchester within easy reach of its town centre and all amenities. Particular features include a very modern open plan Kitchen / Diner, two family bathrooms, separate pantry, good size garden, ample off-road parking including a single garage and log store.

Entrance to the property is via a useful porch and storage area which takes you through to the spacious lounge complete with wood burning stove. This in turn leads to the open and recently modernised Kitchen / Diner which benefits from plenty of natural light and patio doors leading to the garden.

Completing the downstairs is the primary bedroom which has a large window and good storage space, a pantry area with ample storage and a downstairs W/C and Bathroom.

The First floor comprises of a spacious family Bathroom with Bath, overhead shower and WC. Further to this you will find the 3 additional Bedrooms all benefiting from large UPVC windows giving excellent natural light.

The Garden is predominantly laid to lawn with a fenced area that currently houses chickens. Immediately off the property there is a patio area ideal for BBQ's and outdoor dining.

Energy Efficiency Rating	
Current	Potential
Very energy efficient - lower running costs	
(92 plus) A	96
(81-91) B	
(69-80) C	
(55-68) D	
(39-54) E	
(21-38) F	
(1-20) G	
Not energy efficient - higher running costs	
55	
England & Wales	
EU Directive 2002/91/EC	

