



Mary Street

, Porthcawl, CF36 3YA

£180,000



Mary Street

, Porthcawl, CF36 3YA

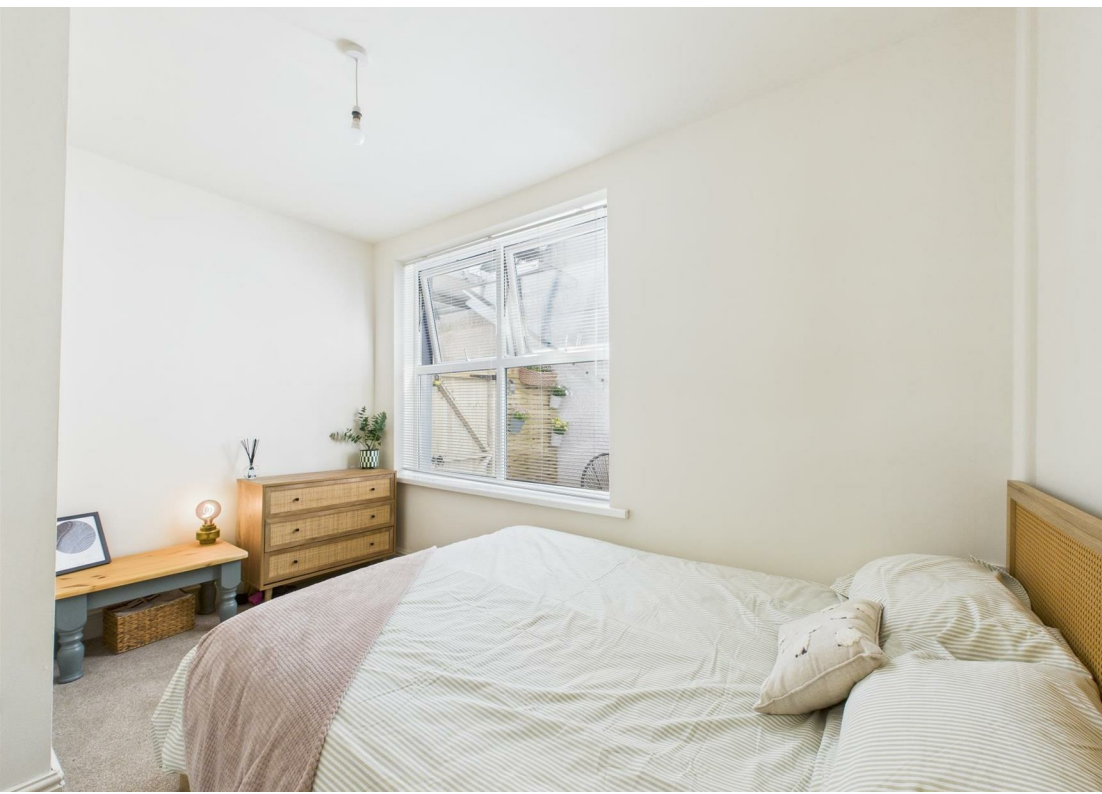
Nestled in the heart of Porthcawl on Mary Street, this beautifully presented two-bedroom apartment occupies the entire ground floor of a charming Edwardian house. Just a stone's throw from the seafront and the bustling town centre, this property offers both convenience and character.

Upon entering, you are greeted by a welcoming hallway with large storage cupboard and access to all the accommodation. The kitchen/breakfast room is a delightful space, ideal for enjoying morning meals or casual dining. Leading from the Kitchen is a spacious lounge with a generous boxed bay window and a fireplace, perfect for relaxation or entertaining guests. The apartment features two bedrooms, providing space for rest and privacy. Additionally, the property boasts a modern wet room, as well as a separate bathroom, ensuring comfort and functionality for all residents.

One of the standout features of this apartment is the private entrance, offering a sense of independence. A courtyard garden, accessible via the kitchen, provides a lovely outdoor space to unwind or enjoy al fresco dining.

This property is a true gem, and viewing is highly recommended to fully appreciate its presentation and prime location. Whether you are seeking a permanent residence or a holiday retreat, this apartment in Porthcawl is sure to impress.





Floor Plan



Viewing

Please contact our McHattons - Porthcawl Office on 01656 331577 if you wish to arrange a viewing appointment for this property or require further information.

These particulars, whilst believed to be accurate are set out as a general outline only for guidance and do not constitute any part of an offer or contract. Intending purchasers should not rely on them as statements of representation of fact, but must satisfy themselves by inspection or otherwise as to their accuracy. No person in this firms employment has the authority to make or give any representation or warranty in respect of the property.

10 Lias Road Porthcawl, CF36 3AH
Tel: 01656 331577 Email: enquiries@mchattons.co.uk www.mchattons.co.uk

Area Map



Energy Efficiency Graph

