



Geraint Jeremiah Close

Neath SA11 2JY

£95,000



Geraint Jeremiah Close
Neath SA11 2JY

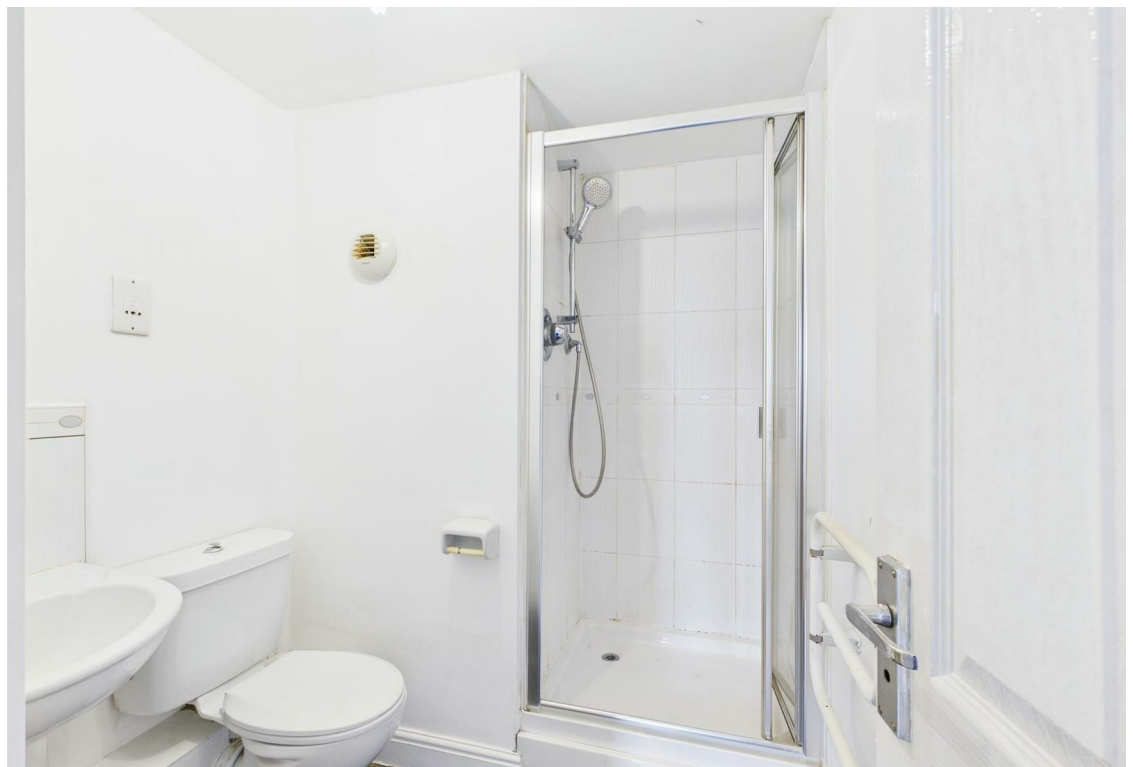
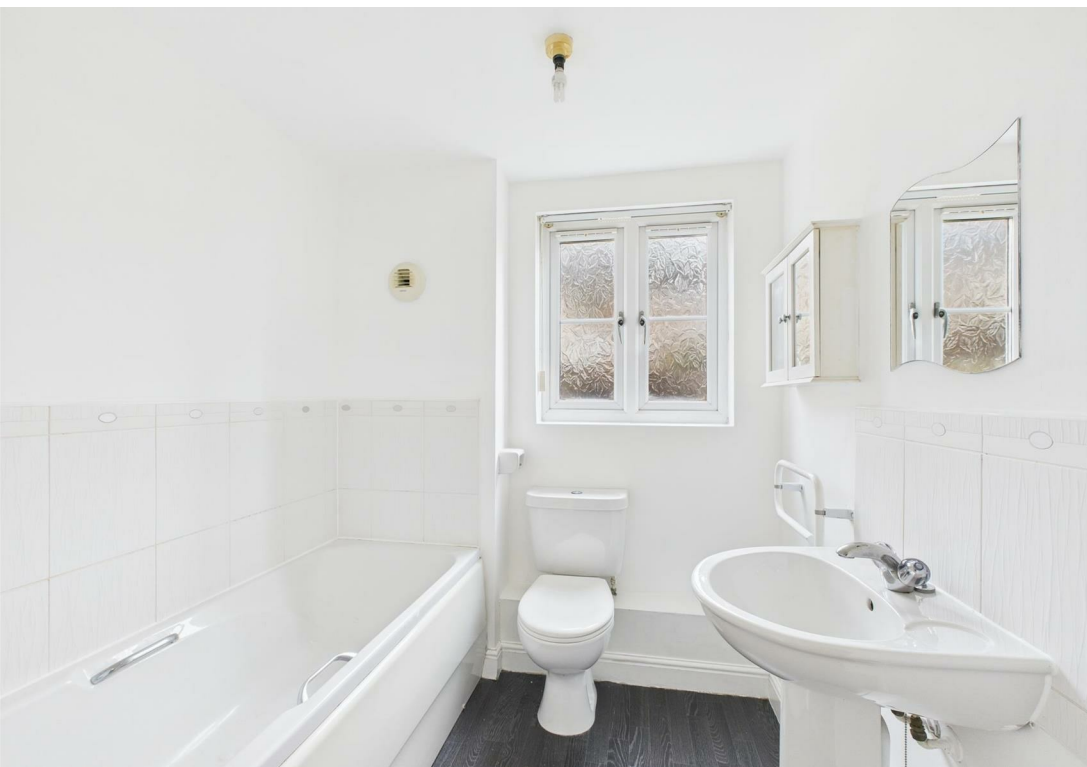
Nestled in the desirable Geraint Jeremiah Close in Neath, is this two-bedroom first floor apartment which is an excellent opportunity for first-time buyers or those seeking a buy-to-let investment. The property boasts views of the surrounding area and is part of a modern development that is highly sought after.

Upon entering the apartment, you are welcomed by an entrance hall that leads to an open plan lounge and kitchen area. This inviting space features double doors that open onto a charming Juliet balcony, perfect for enjoying the fresh air. The apartment includes two generously sized bedrooms, one of which benefits from an en-suite shower room, providing added convenience and privacy. A well-appointed bathroom and ample storage space throughout the flat enhance its practicality.

The location is particularly advantageous, with local schools, shops, and public transport links all within easy reach, making daily life both convenient and enjoyable. Additionally, the property comes with an allocated parking space, ensuring that you have a designated area for your vehicle.

With no on-going chain, this apartment is ready for you to move in and make it your own. Internal viewings are highly recommended to fully appreciate the quality and potential of this delightful home. Don't miss out on this fantastic opportunity to secure a lovely apartment in a prime location.





Floor Plan



Viewing

Please contact our McHattons - Porthcawl Office on 01656 331577 if you wish to arrange a viewing appointment for this property or require further information.

These particulars, whilst believed to be accurate are set out as a general outline only for guidance and do not constitute any part of an offer or contract. Intending purchasers should not rely on them as statements of representation of fact, but must satisfy themselves by inspection or otherwise as to their accuracy. No person in this firms employment has the authority to make or give any representation or warranty in respect of the property.

10 Lias Road Porthcawl, CF36 3AH
Tel: 01656 331577 Email: enquiries@mchattons.co.uk www.mchattons.co.uk

Area Map



Energy Efficiency Graph

