



AR WORTH
McHattons
01656 331

Cheltenham Road
, Porthcawl, CF36 3PT

Offers in the region of £275,000



Cheltenham Road
, Porthcawl, CF36 3PT

Nestled on Cheltenham Road in the charming area of Nottage, this delightful semi detached bungalow offers a wonderful opportunity for a new homeowner and is perfect for those seeking a comfortable living space.

This semi-detached dormer bungalow not only provides a warm and inviting atmosphere but also presents the potential for further development, subject to planning permission. Imagine the possibilities of creating your dream home in this lovely abode!

The property features three bedrooms, a convenient shower room, a welcoming living room, a bright conservatory, a functional kitchen, and a study area - providing ample space for relaxation and productivity.

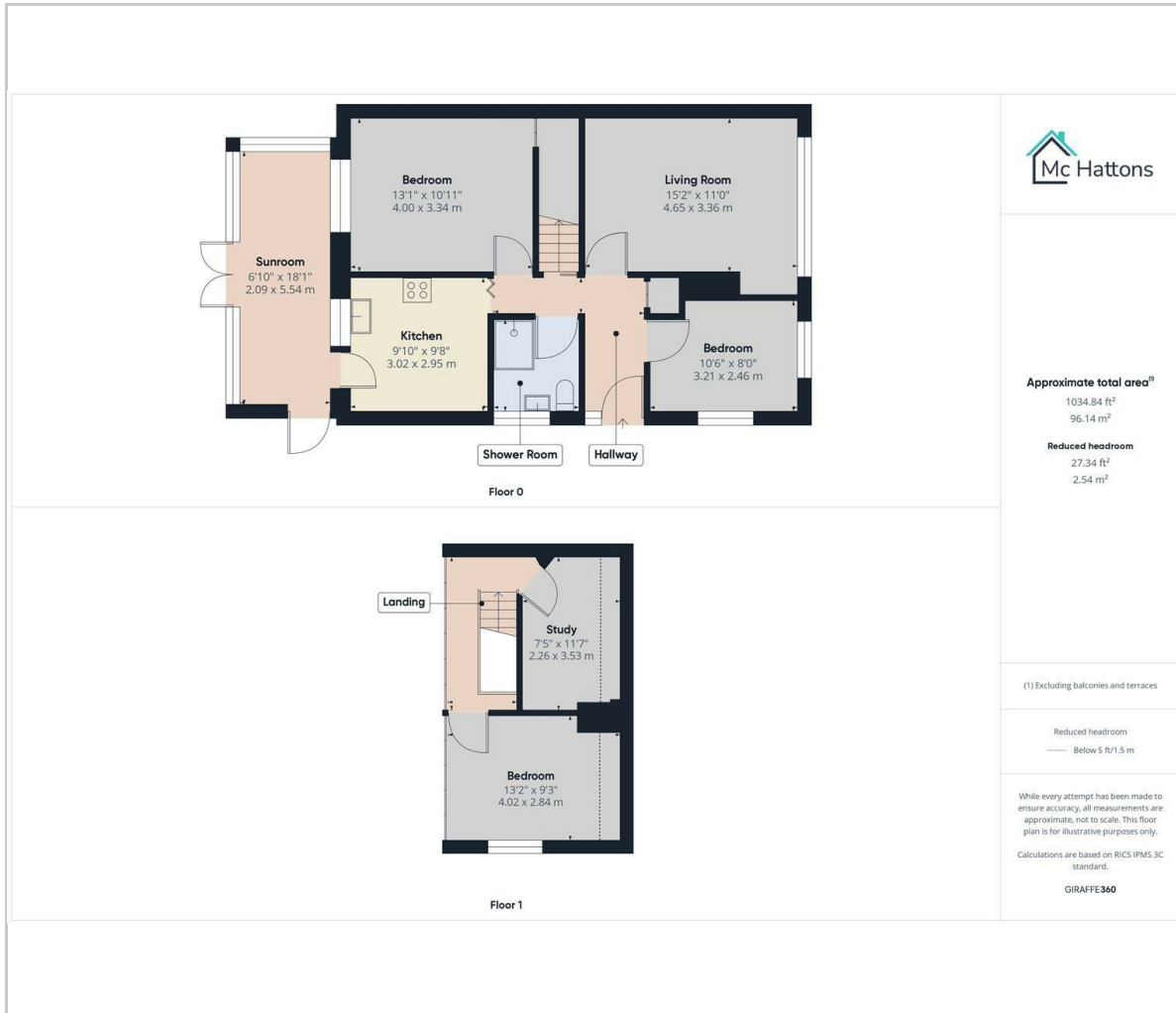
Situated in close proximity to Nottage Village, with its picturesque Village Green and traditional Public Houses. Additionally, the easy access to the nearby bus stop, schools, and shops ensures convenience and connectivity for all your daily needs.

This property is a rare find, offering a comfortable living space with the potential for personalisation and growth. Don't miss the chance to make this bungalow your own - seize this opportunity with no ongoing chain!





Floor Plan



Area Map



Viewing

Please contact our McHattons - Porthcawl Office on 01656 331577 if you wish to arrange a viewing appointment for this property or require further information.

These particulars, whilst believed to be accurate are set out as a general outline only for guidance and do not constitute any part of an offer or contract. Intending purchasers should not rely on them as statements of representation of fact, but must satisfy themselves by inspection or otherwise as to their accuracy. No person in this firm's employment has the authority to make or give any representation or warranty in respect of the property.

10 Lias Road Porthcawl, CF36 3AH
 Tel: 01656 331577 Email: enquiries@mchattons.co.uk www.mchattons.co.uk

Energy Efficiency Graph

