



Suffolk Close

, Porthcawl, CF36 3JR

£135,000



2



1



1



3

Suffolk Close

, Porthcawl, CF36 3JR

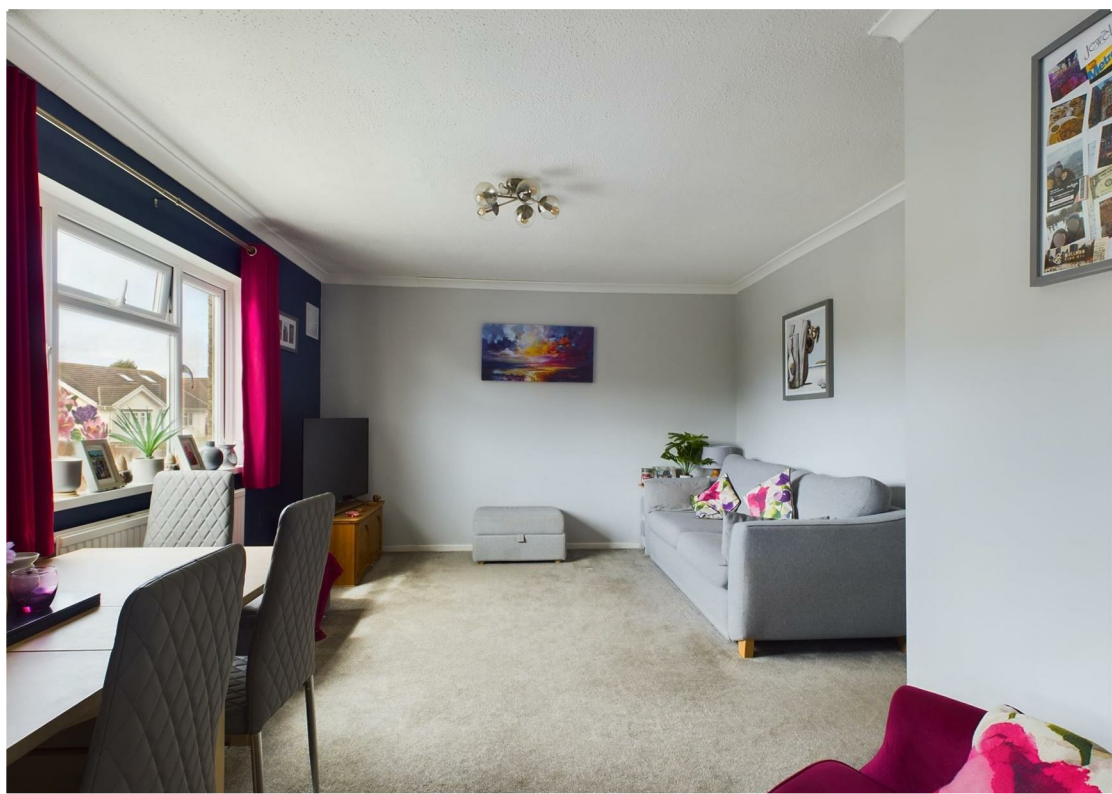
Available for sale is this purpose built first floor apartment which benefits from use of a courtyard garden. The property has a modern and contemporary feel, ideal for a first time buyer or an investor.

Accommodation comprises hallway with a large walk in storage cupboard, plus two further store cupboards. There are two bedrooms including the master bedroom which benefits from built in wardrobes. The living room offers space for a comfortable social area along with room for a dining table and chairs. Off the living room is the kitchen with its range of units and space for appliances. The bathroom completes the accommodation.

The courtyard has a storage shed which will remain. Off road parking is available but is not allocated and is on a first come first served basis.

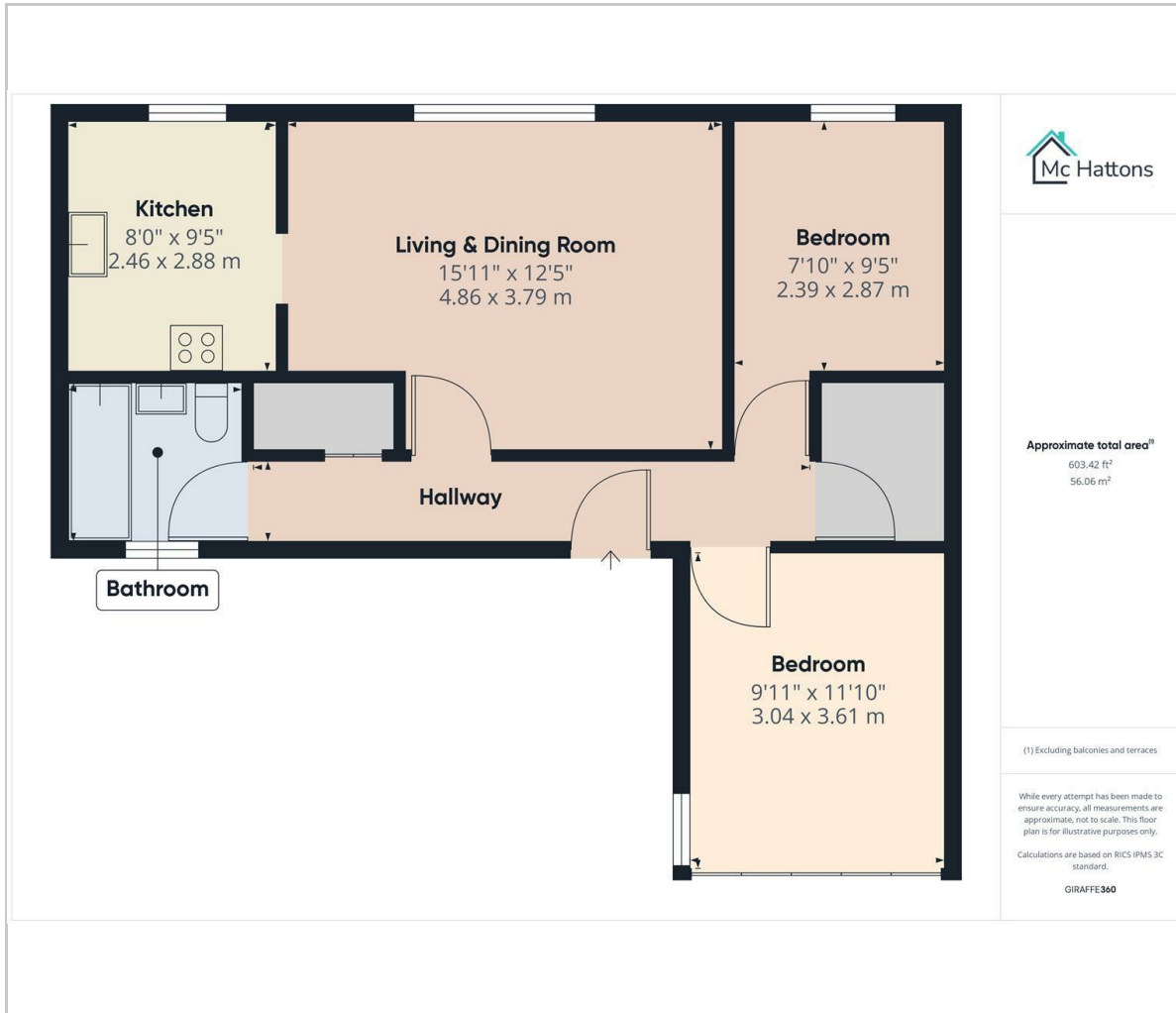
Please note that there is a right of access through the courtyard for the occupants of the ground floor flat.

Conveniently located between Porthcawl town and Nottage village, the flat offers access to plenty of local amenities including the beach, shops and schools.





Floor Plan



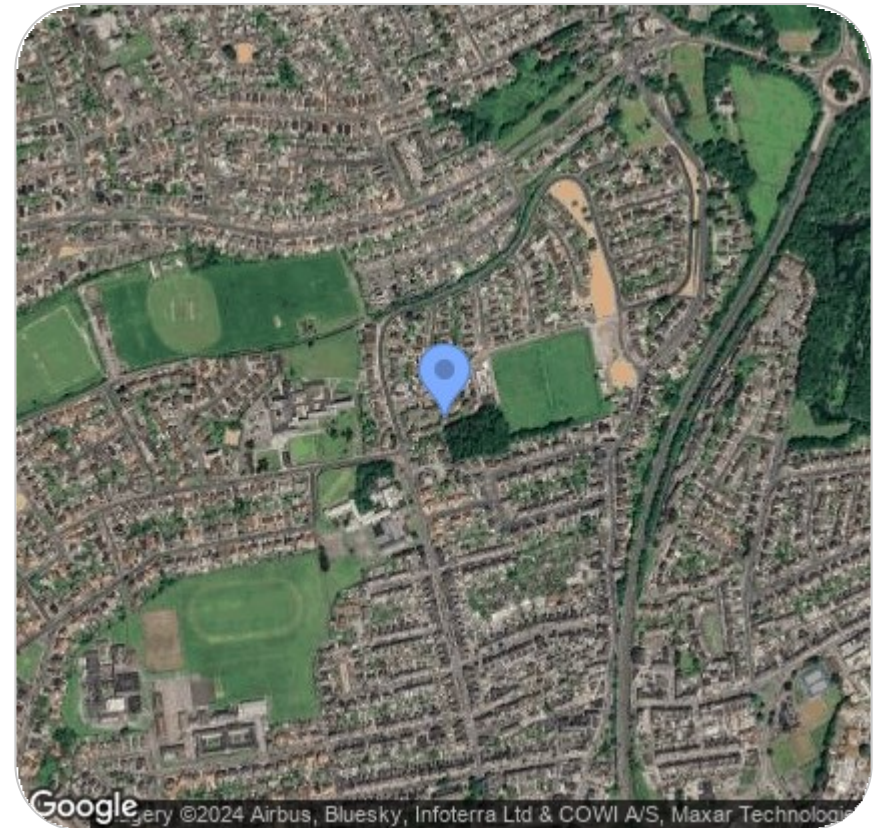
Viewing

Please contact our McHattons - Porthcawl Office on 01656 331577 if you wish to arrange a viewing appointment for this property or require further information.

These particulars, whilst believed to be accurate are set out as a general outline only for guidance and do not constitute any part of an offer or contract. Intending purchasers should not rely on them as statements of representation of fact, but must satisfy themselves by inspection or otherwise as to their accuracy. No person in this firm's employment has the authority to make or give any representation or warranty in respect of the property.

10 Lias Road Porthcawl, CF36 3AH
Tel: 01656 331577 Email: enquiries@mchattons.co.uk www.mchattons.co.uk

Area Map



Energy Efficiency Graph

