



2 Lewis Place
Porthcawl, CF36 3EF

Offers in excess of £300,000



2 Lewis Place
Porthcawl, CF36 3EF

Located on Lewis Place Porthcawl, within close proximity of the town, this traditional three-bedroom semi-detached house presents a charming living opportunity.

The property features an inviting open-plan kitchen/dining/living room, creating a spacious and sociable hub for daily living. Additionally, downstairs, a convenient w.c./utility adds to the practicality of the home. Upstairs, three well-appointed bedrooms offer comfortable accommodation, complemented by a modern bathroom.

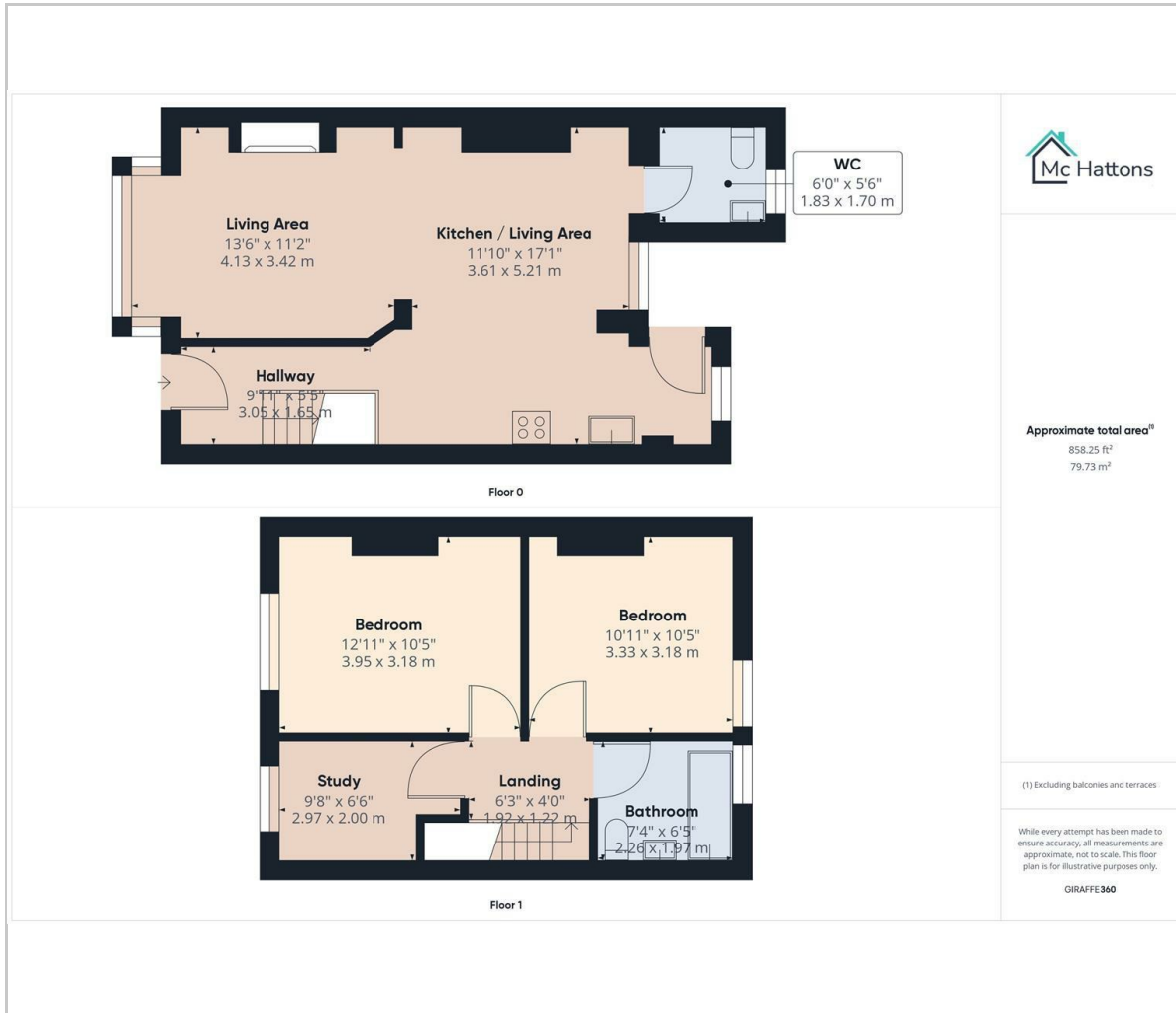
Outside, an enclosed rear garden provides a private outdoor space for relaxation and entertaining, while a detached garage offers parking and storage solutions.

Porthcawl itself boasts a range of local amenities, including shops,





Floor Plan



Area Map



Viewing

Please contact our McHattons - Porthcawl Office on 01656 331577 if you wish to arrange a viewing appointment for this property or require further information.

These particulars, whilst believed to be accurate are set out as a general outline only for guidance and do not constitute any part of an offer or contract. Intending purchasers should not rely on them as statements of representation of fact, but must satisfy themselves by inspection or otherwise as to their accuracy. No person in this firm's employment has the authority to make or give any representation or warranty in respect of the property.

10 Lias Road Porthcawl, CF36 3AH
Tel: 01656 331577 Email: enquiries@mchattons.co.uk www.mchattons.co.uk

Energy Efficiency Graph

