



# Roman Road, E6

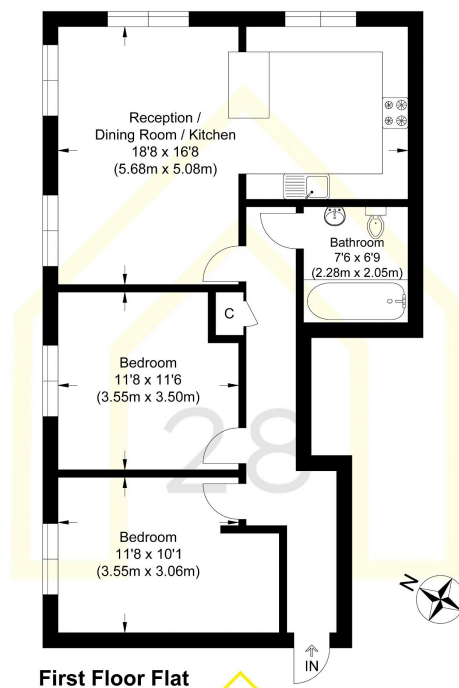
£230,000

🛏️ 2 🚿 1 🚺 1





- Two Bedrooms
- Open Plan Kitchen
- Allocated Parking Space
- Close to Schools
- Quiet Location
- Long Lease
- 
- 



**First Floor Flat**



**Roman Road**

Approximate Gross Internal Floor Area : 72.10 sq m / 776.07 sq ft  
Illustration for identification purposes only, measurements are approximate, not to scale.

Explore this uniquely spacious two-bedroom apartment, nestled in a tranquil, purpose-built complex in East Ham.