



**Tunbridge Way
Emersons Green**

£310,000

ChaseBuchanan

Key Features

- No onward chain
- Two bedrooms
- Kitchen-Diner
- Off-street parking
- Close to shops and amenities
- Low maintenance garden
- Downstairs WC
- Walk-in Shower

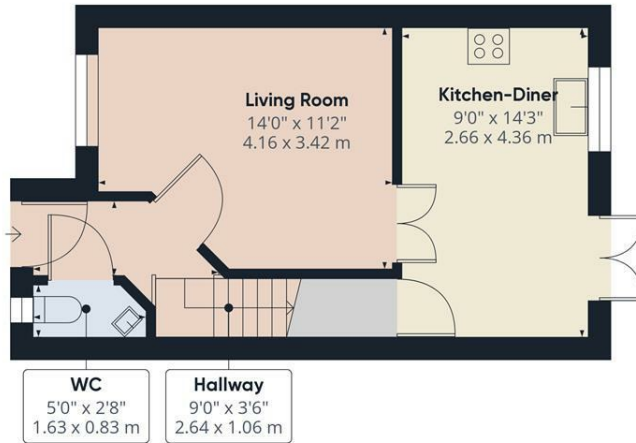


Description

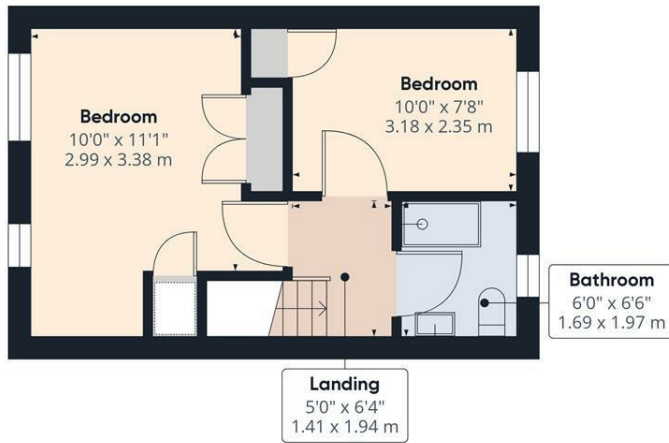
This attractive two-floor two bed terraced home sits in the ever popular Tunbridge Way, Emersons Green. On the ground floor, you'll find a comfortable living room for relaxation and entertainment, a well-appointed kitchen-diner as well as a convenient WC. Moving up to the first floor, we have the home's two welcoming bedrooms, perfect for rest after a long day. . Completing the first floor layout is a modern bathroom equipped with a large walk-in shower, ensuring daily routines are smooth and efficient. With its practical allocation of space, this property offers comfort and versatility for potential homeowners. Externally there is an enclosed rear garden and off-street parking for two cars to the front.







Ground Floor



Floor 1

Approximate total area[®]
628.61 ft²
58.4 m²

(1) Excluding balconies and terraces

While every attempt has been made to ensure accuracy, all measurements are approximate, not to scale. This floor plan is for illustrative purposes only.

GIRAFFE360

For more information or to book a viewing, please contact:

0333 3214066

downend@chasebuchanan.co.uk

6 Badminton Road, BS16 7BQ

ChaseBuchanan

Care has been taken in the preparation of these particulars, however, their accuracy is not guaranteed and they do not form part of any contract. Measurements stated must be considered maximum.

