



**Streamside
Bristol**

£325,000

ChaseBuchanan

Key Features

- Known onward chain (single property)
- Kitchen-diner
- Off Street Parking
- Three Double Bedrooms
- Enclosed Rear Garden
- Planning permission for loft conversion

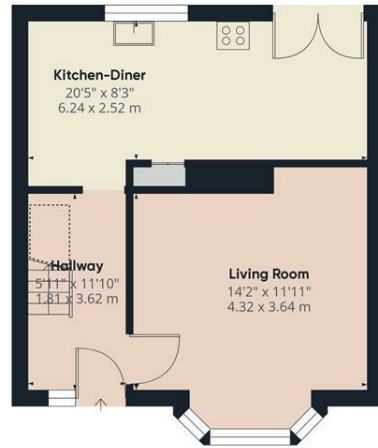


Description

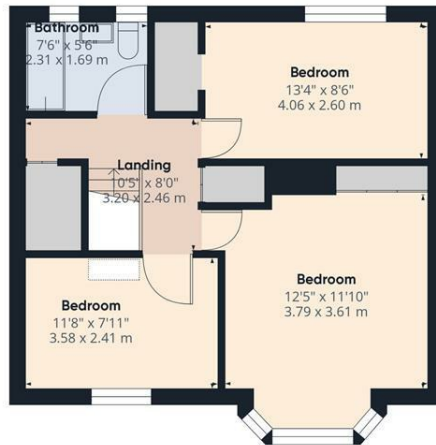
This beautifully maintained property encompasses a total of circa 1,000 square feet spread across two practical floors. The ground floor accommodates an efficiently designed kitchen-diner and a commodious living room, allowing for ideal space utilization with the first floor featuring an all-inclusive 3 double bedrooms and a generously sized bathroom, complete with a bath as well as additional storage cupboards. Externally the property boast an enclosed rear garden and desirable off street parking for two cars to the front. This thoughtfully organized property design includes essential modern-day facilities and is the perfect canvas for any potential homeowner to design their dream space. The home also benefits from granted planning permission for loft conversion featuring Juliette balcony, without the loss of any current bedroom space.







Ground Floor



Floor 1

Approximate total area⁽¹⁾

977.14 ft²
90.78 m²

Reduced headroom

12.97 ft²
1.21 m²

(1) Excluding balconies and terraces.

☒ Reduced headroom
(below 1.5m/4.92ft)

While every attempt has been made to ensure accuracy, all measurements are approximate, not to scale. This floor plan is for illustrative purposes only.

GIRAFFE360

For more information or to book a viewing, please contact:

0333 3214066

downend@chasebuchanan.co.uk

6 Badminton Road, BS16 7BQ

ChaseBuchanan

Care has been taken in the preparation of these particulars, however, their accuracy is not guaranteed and they do not form part of any contract. Measurements stated must be considered maximum.

