



**Chase**Buchanan

# Cedar Way, Pucklechurch, Bristol

## £360,000

- EXTENDED SEMI DETACHED
- L-SHAPED LIVING ROOM
- SPACIOUS KITCHEN
- 3 DOUBLE BEDROOMS
- EN-SUITE TO MASTER
- GARAGE
- OFF ROAD PARKING S
- NO ONWARD CHAIN

Located in the heart of the village of Pucklechurch, you'll enjoy the tranquillity of rural living while still being within easy reach of the Avon Ring Road giving access to Bristol and Bath. Whether you're looking to escape the hustle and bustle or simply want a change of pace, this property offers the best of both worlds.

This delightful 3 double bedroom home offers spacious living, including an L-shaped living room, kitchen-dining room, separate hallway, downstairs bathroom, three double bedrooms and master with an en-suite shower room and walk-in-wardrobe.

Outside you have front, side and rear gardens and the added bonus of a garage and parking, you'll never have to worry about finding a spot for your vehicle!

Don't miss out on the opportunity to make this house your home - book a viewing today and experience the charm of Cedar Way for yourself.

Offered with no onward chain!

This property has an energy performance rating of E





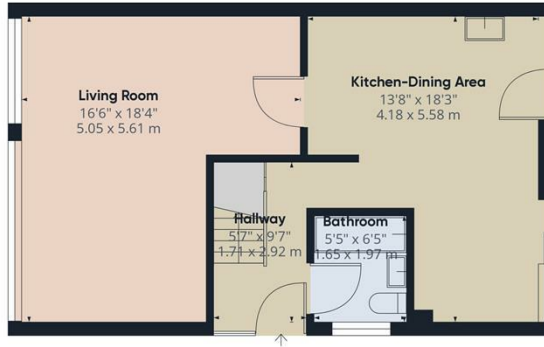


For more information or to book a viewing, please contact:

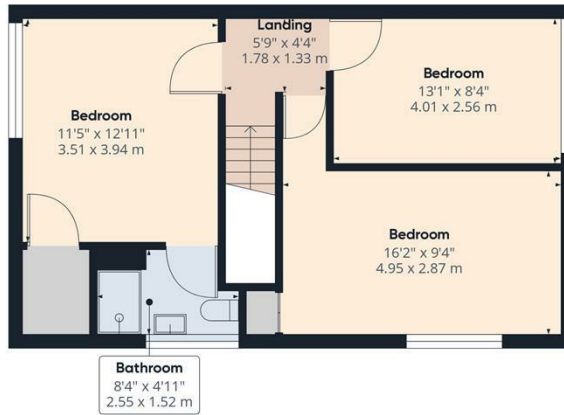
**0333 3214066**

downend@chasebuchanan.co.uk  
6 Badminton Road, Downend, BS16 7BQ

**ChaseBuchanan**



Ground Floor



Floor 1

Approximate total area<sup>(1)</sup>

1083.71 ft<sup>2</sup>  
100.68 m<sup>2</sup>

(1) Excluding balconies and terraces

While every attempt has been made to ensure accuracy, all measurements are approximate, not to scale. This floor plan is for illustrative purposes only.

GIRAFFE 360

Care has been taken in the preparation of these particulars, however, their accuracy is not guaranteed and they do not form part of any contract. Measurements stated must be considered maximum.



**ChaseBuchanan**