



Chase Buchanan
0117 904 0000
for sale

**Longden Road
Bristol**
£560,000
Chase Buchanan

Key Features

- OPEN PLAN LOUNGE-KITCHEN DINER
- 4 BEDROOMS
- EXTENDED SEMI-DETACHED
- EN-SUITE TO MAIN
- OFF STREET PARKING
- OFFICE/STUDY
- SEPARATE LOUNGE



Description

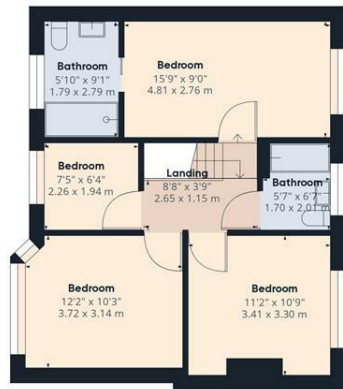
Located on the convenient Longden Road, close to Page Park and all that Downend and Staple Hill high streets have to offer, this impressive property offers an expansive circa 139 square meters of living space, spread over two well-designed levels. The ground floor boasts a spacious kitchen-dining-living area and is further complemented by a separate utility and downstairs w.c.. Furthermore there is a separate living room fitted with a warm, cosy fireplace and an office room that could also serve as an extra bedroom or storage, based on your needs. The first floor doesn't fall short either, featuring four generously sized bedrooms with en-suite to main and further family bathroom. Externally, the bifold doors provide access to a superb West-facing rear garden. To the front there is off-street parking for two cars. This property offers ample living space and is perfectly suited for a large family or for those valuing comfort and convenience.







Ground Floor



Floor 1

Approximate total area⁽¹⁾

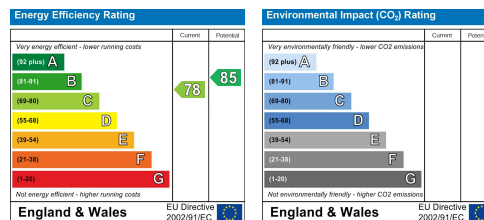
1496.15 ft²
139 m²

(1) Excluding balconies and terraces

While every attempt has been made to ensure accuracy, all measurements are approximate, not to scale. This floor plan is for illustrative purposes only.

GIRAFFE360

Care has been taken in the preparation of these particulars, however, their accuracy is not guaranteed and they do not form part of any contract. Measurements stated must be considered maximum.



For more information or to book a viewing, please contact:

0117 956 1107

downend@chasebuchanan.co.uk

6 Badminton Road, BS16 7BQ

ChaseBuchanan