



**Lodge Walk  
Bristol**

£300,000

**ChaseBuchanan**



### Key Features

- No Onward Chain
- Close to High Street
- 3 Bedrooms
- Semi Detached
- Garage
- In need of Modernisation
- Backing on to Allotments
- Cul-de-sac



### Description

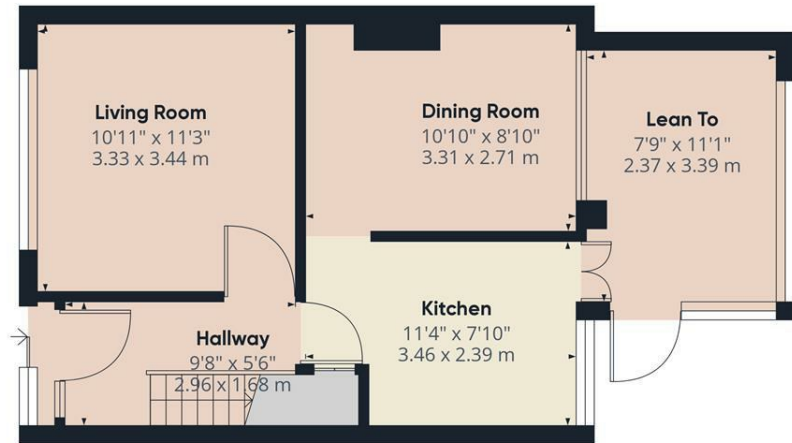
Located in the heart of Downend just a stones throw from the high street sits this three bedroom end-terrace property which is being offered with no onward chain. Requiring modernisation throughout, the home offers plenty of potential in the form of lounge, dining room, kitchen and lean-to to the ground floor. On the first floor you will find two double bedrooms, further single bedroom and family bathroom. Externally the property boasts a wrap-around garden and garage.



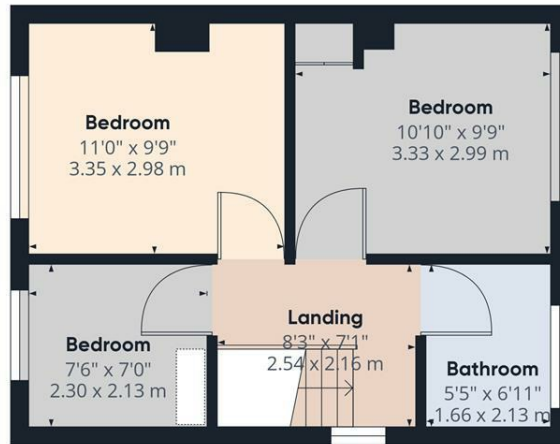








Ground Floor



Floor 1

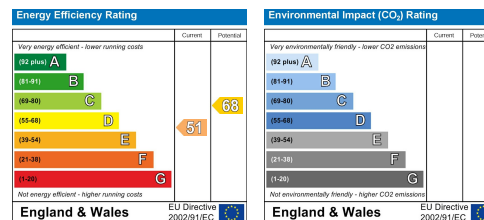
Approximate total area<sup>(1)</sup>  
820.13 ft<sup>2</sup>  
76.19 m<sup>2</sup>

(1) Excluding balconies and terraces

While every attempt has been made to ensure accuracy, all measurements are approximate, not to scale. This floor plan is for illustrative purposes only.

GIRAFFE360

Care has been taken in the preparation of these particulars, however, their accuracy is not guaranteed and they do not form part of any contract. Measurements stated must be considered maximum.



For more information or to book a viewing, please contact:

**0333 3214066**

downend@chasebuchanan.co.uk

6 Badminton Road, BS16 7BQ

**ChaseBuchanan**