



**Cleeve Road
Downend**

£375,000

ChaseBuchanan

Key Features

- Open Plan Kitchen-Diner
- Three Double Bedrooms
- En-Suite to Main Bedroom
- Off-Street Parking for 2 Cars
- Downstairs WC & Utility
- Easy Maintenance Garden
- Side Access

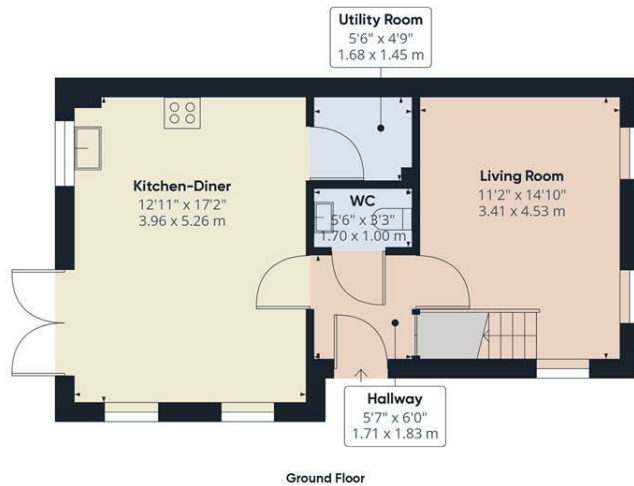


Description

Located just a stones throw from all the amenities Downend high street has to offer, this spacious two-storey property provides ample room for both living and storage. On the ground floor, the home's functional floor plan includes a well-equipped open-plan kitchen-diner, a commodious living room, a conveniently located water closet and a utility room for extra storage and laundry needs. Upstairs on the first floor, you will find all three double bedrooms, with en-suite to main, offering the perfect mix of practicality and luxury. Externally there is off-street parking for two and a low maintenance garden with side access. This finely laid-out property guarantees comfort, functionality, and a ready-to-move-in experience for any potential homeowner.







Ground Floor



Floor 1

Approximate total area⁽¹⁾

925.72 ft²
86 m²

(1) Excluding balconies and terraces

While every attempt has been made to ensure accuracy, all measurements are approximate, not to scale. This floor plan is for illustrative purposes only.

GIRAFFE360

For more information or to book a viewing, please contact:

0117 9576290

downend@chasebuchanan.co.uk

6 Badminton Road, BS16 7BQ

ChaseBuchanan

Care has been taken in the preparation of these particulars, however, their accuracy is not guaranteed and they do not form part of any contract. Measurements stated must be considered maximum.

