



SQUARE LEAZE

**Square Leaze  
Bristol**

£235,000

**ChaseBuchanan**

## Key Features

- BEAUTIFULLY PRESENTED
- GROUND FLOOR APARTMENT
- OPEN PLAN LIVING
- BUILT IN WARDROBES
- EN-SUITE TO MASTER



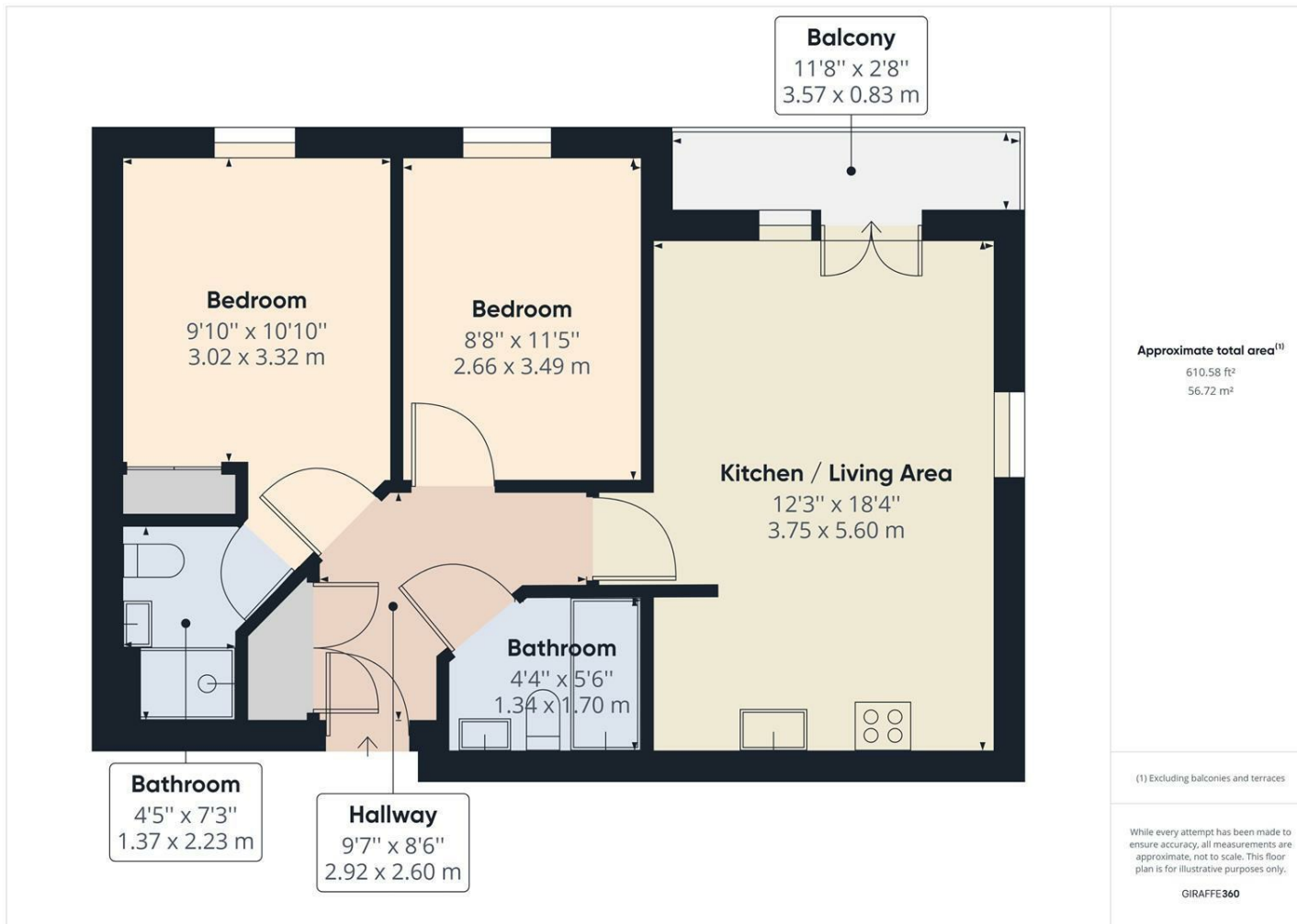
## Description

Situated on the popular Square Lease in Charlton Hayes development this spacious apartment is just a brief walk away from the metro bus stop and is in close proximity to Cribbs Causeway and many other large organisations such as Rolls Royce and Airbus etc whilst giving easy access to the M4 and M5 motorway and Bristol Parkway.

This spacious two bedroom ground floor apartment overlooks an open green space and consists of communal entranceway, hallway, two double bedrooms with built in wardrobes and ensuite to main, family bathroom and open-plan lounge-kitchen-diner with additional balcony. Externally the property boasts off street parking, bin store and bike shed. Estimated rental circa £1,300. The property is also still under NHBC warranty.







For more information or to book a viewing, please contact:

**0117 9576290**

downend@chasebuchanan.co.uk

6 Badminton Road, BS16 7BQ

**ChaseBuchanan**

Care has been taken in the preparation of these particulars, however, their accuracy is not guaranteed and they do not form part of any contract. Measurements stated must be considered maximum.

