



**Bedminster Parade
Bristol**

£290,000

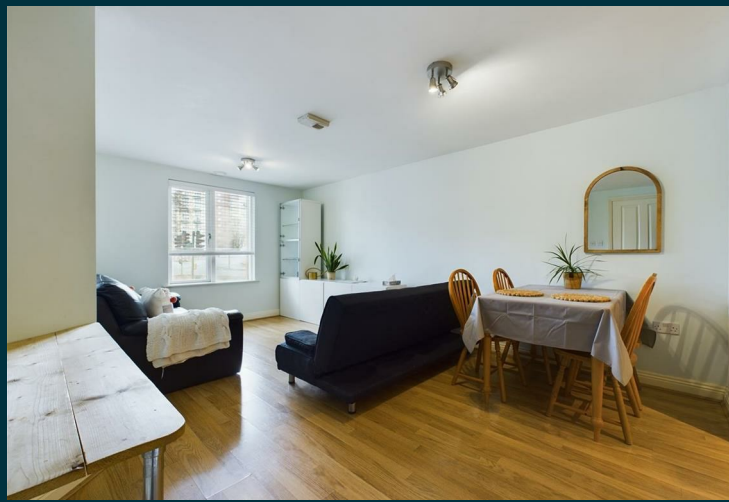
ChaseBuchanan

Key Features

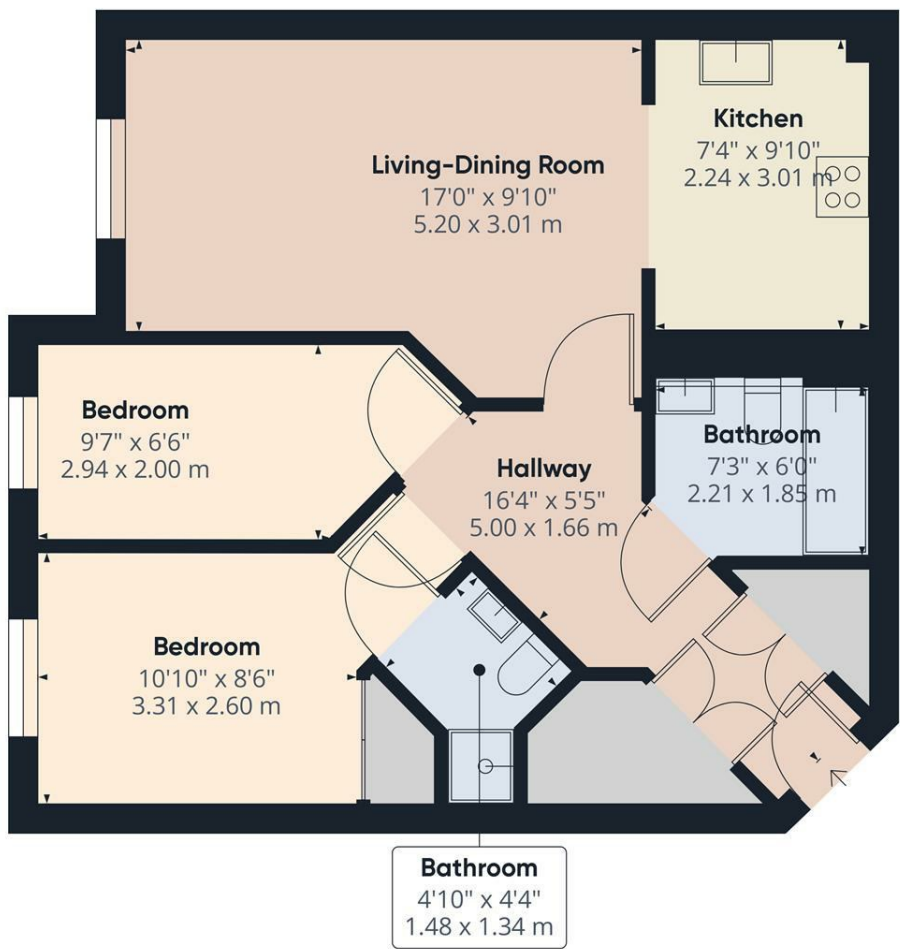
- Ground Floor
- Allocated Parking
- Close Temple Meads
- Two bedrooms
- Family bathroom
- En-suite
- EPC Rating C
- Council Tax B

Description

Located close to Temple Meads and the newly developed Whaping Wharf, this charming ground floor flat spans a total area of 635.07 square feet, superbly designed to meet every homeowner's needs. The well-thought-out floor plan includes two bedrooms, perfect for a small family or professionals looking for a guest room or home office. The property boasts a main bathroom and en-suite shower room to main bedroom. The property also boasts a generously sized living-dining room that acts as the heart of the home, inviting plenty of natural light and opportunities for cosy evenings or entertaining guests. The kitchen is notably equipped with a stove, ready for home-cooked meals and memorable dining experiences. Externally the property benefits from an allocated parking space. This two-bedroom, two-bathroom property combines practicality and style in one, ready for its new homeowner to move in.







Approximate total area⁽¹⁾
 645.2 ft²
 59.94 m²

(1) Excluding balconies and terraces

While every attempt has been made to ensure accuracy, all measurements are approximate, not to scale. This floor plan is for illustrative purposes only.

GIRAFFE360

For more information or to book a viewing, please contact:

0117 9576290

downend@chasebuchanan.co.uk

6 Badminton Road, BS16 7BQ

ChaseBuchanan

Care has been taken in the preparation of these particulars, however, their accuracy is not guaranteed and they do not form part of any contract. Measurements stated must be considered maximum.

