



VICTORIA
PARK
1888

**Cross Street
Bristol**

£310,000

ChaseBuchanan

Key Features

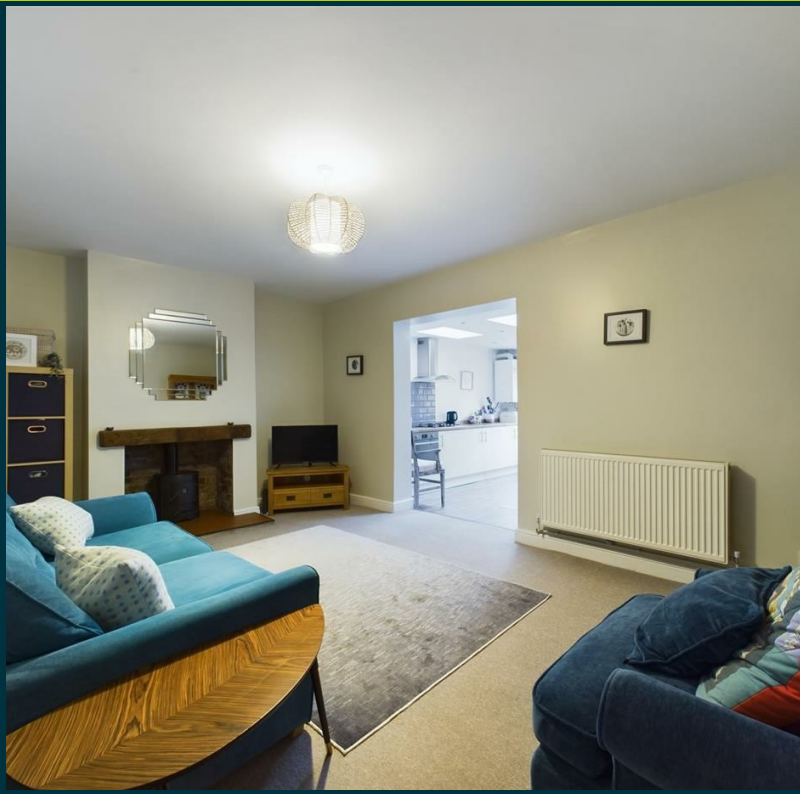
- Victorian Character
- Extended
- Two Double Bedrooms
- 94Sqm
- Close to Shops and Amenities
- Two Reception Rooms

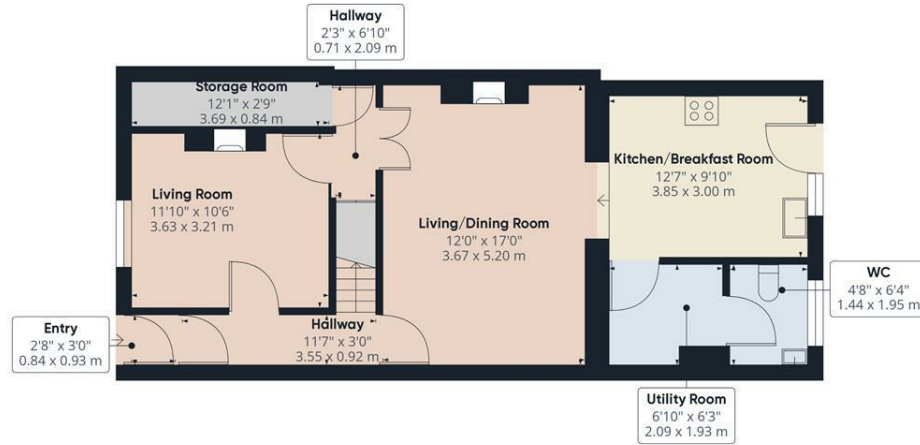


Description

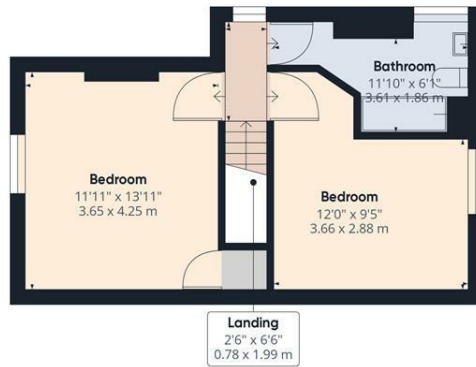
This spacious, two-storey property offers a generous circa 1011.81 square feet of living space (94.49sqM). The ground floor features a warm and inviting living room, an additional living/dining room that can be customized per individual lifestyle needs, a fitted kitchen-breakfast room, a substantial utility room for supplemental storage and a convenient WC. On the first floor, you will find two well-sized bedrooms and a bathroom furnished with a bath. Externally there is a south-facing rear garden with side access and garage to the rear. This well-appointed residence has been designed with great consideration, prioritizing functional living spaces for everyday comfort, while also catering to the specific needs of each potential homeowner. With a total of 2 bedrooms and 2 bathrooms spread across 2 floors, this modern and versatile home effortlessly meets the demands of contemporary living.







Ground Floor



Floor 1

Approximate total area⁽¹⁾

1017.12 ft²
94.49 m²

(1) Excluding balconies and terraces

While every attempt has been made to ensure accuracy, all measurements are approximate, not to scale. This floor plan is for illustrative purposes only.

GIRAFFE360

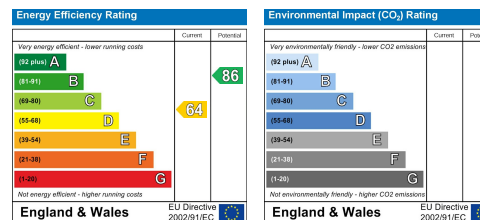
For more information or to book a viewing, please contact:

0117 9576290

downend@chasebuchanan.co.uk

6 Badminton Road, BS16 7BQ

Care has been taken in the preparation of these particulars, however, their accuracy is not guaranteed and they do not form part of any contract. Measurements stated must be considered maximum.



ChaseBuchanan