



NOS
129-139

**Pinkers Mead
Emersons Green**

£200,000

ChaseBuchanan

Key Features

- NO ONWARD CHAIN
- TWO BEDROOMS
- ALLOCATED PARKING SPACE
- SEPARATE KITCHEN
- OPEN PLAN LOUNGE-DINER
- CLOSE TO SHOPS
- FIRST FLOOR

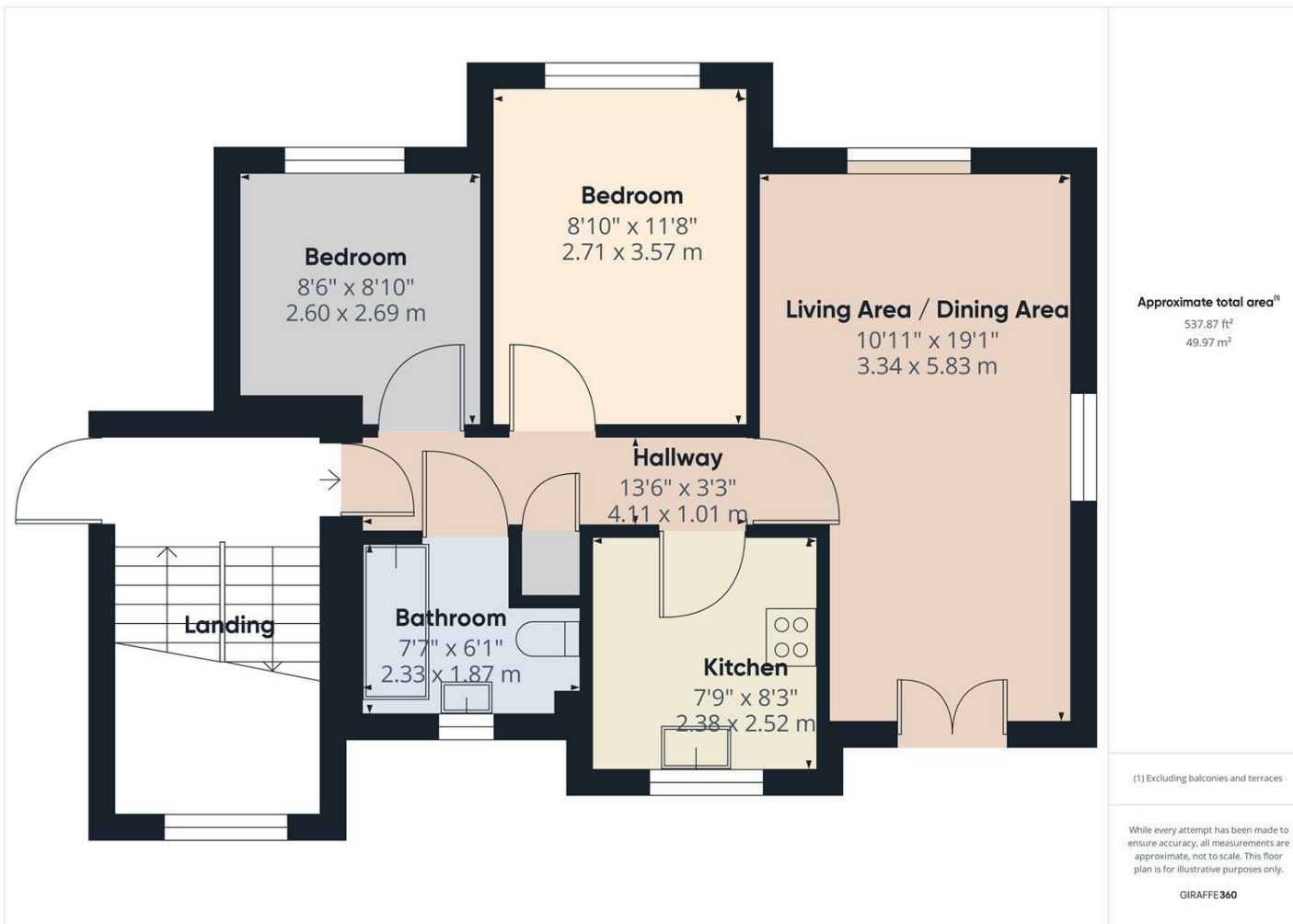


Description

This charming first floor flat boasts a total area of 527.43 square feet, tastefully designed to maximize space and comfort. The property consists of two bedrooms and one bathroom, perfectly suited for individuals or couples, a living area that could seamlessly switch between a relaxing retreat or a dining area depending on your needs. A well-equipped kitchen, complete with an oven, provides ample space for fuss-free cooking, while the bathroom with a bath offers a tranquil space for relaxation and renewal after a long day. With its considered design and practical layout, this flat makes for a perfect backdrop to your everyday life. Externally there is an allocated parking spot.





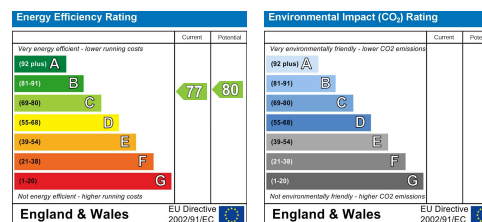


For more information or to book a viewing, please contact:

0117 9576290

6 Badminton Road, BS16 7BQ

Care has been taken in the preparation of these particulars, however, their accuracy is not guaranteed and they do not form part of any contract. Measurements stated must be considered maximum.



ChaseBuchanan