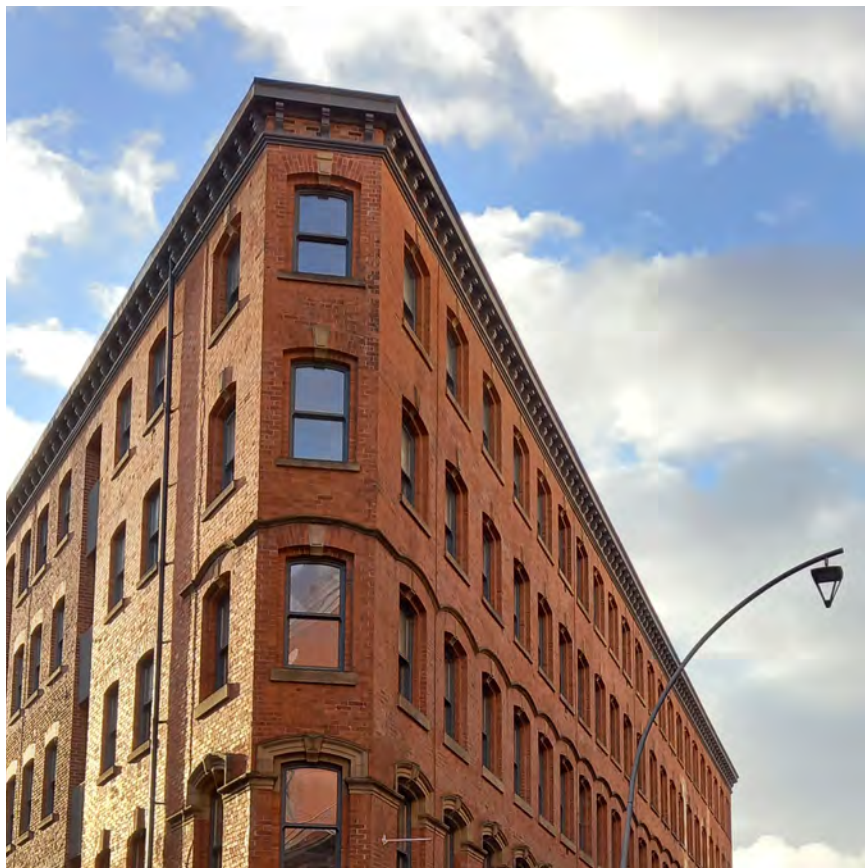


ED



Discover the best of Manchester

**The James Manchester blends urban dynamism
with an atmosphere of space, creativity and culture.**

Formerly a 19th century shoemaker's warehouse, the historic building has been carefully converted to provide 40 luxury apartments. Each residence exudes contemporary elegance while retaining echoes of its industrial past, offering a unique living experience for urbanites.

- Concierge
- On-site Maintenance
- Access Control & CCTV
- Social Events

Video Tour



Living at Its Heart

Our residents can truly recharge mind and body in this unique environment or experience the beating heart of the city.

Located in Manchester's vibrant Northern Quarter, celebrated for its mix of office spaces, stores, and entertainment options, this property enjoys close proximity to the bustling commercial hub, an array of shops, and convenient transport links including train, bus, and tram stations.



Think Space

Double height ceilings, large triple glazed windows, and generous internal space - our one and two bedroom apartments accommodate all.

Whether you are working remotely or entertaining guests, our expansive living spaces provide the ideal ambient for both productivity and socialising.





Timeless Elegance

Step into a realm of ageless charm and modern opulence: Where the legacy of the past converges with the aspirations of modern living.

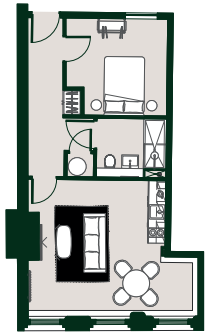
Our newly renovated flats seamlessly integrate the grandeur of a historic structure with contemporary amenities.

Each apartment showcases a fusion of traditional architectural elements and cutting-edge appliances, seamlessly blending old and new to create spaces for any occasion.



Our Apartments

We offer four different types of one and two bedroom apartments which come fully furnished and equipped with state-of-the-art appliances.



One Bed Apartment



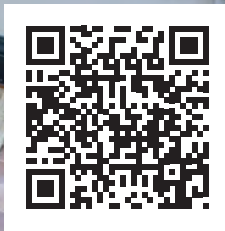
Two Bed Apartment





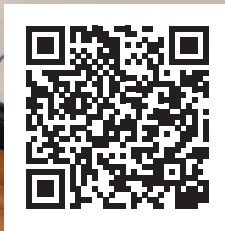
One Bed Apartment

Video Tour



Two Bed Apartment

Video Tour





Grand Two Bed Apartment

Video Tour



**Our apartments offer
all the appliances that
modern living requires.**

- Oven
- Induction Hobs
- Microwave with Grill
- Fridge & Freezer
- Nespresso Machine
- Washing Machine & Dryer





Gym



All within Your Reach

PUBLIC TRANSPORT

Shudehill Tram Stop	220 ft
Manchester Victoria Station	0.2 mile
Manchester Picadilly Station	0.8 mile

POINTS OF INTEREST

Canal Street	14 min
Chinatown	10 min
The Arndale	1 min
University of Manchester	16 min
Manchester Metropolitan University	16 min
University of Law	9 min



THE JAMES

The James Manchester
8 Dantzic Street
Manchester
M4 2AD

0161 523 7928
manchester@thejames.uk
thejames.uk/manchester