



2 Floors



4 Bedrooms



Utility



1 En suite

BUTLER FOUR BEDROOM HOME

A four bedroom detached home comprising a spacious lounge with bay window and fantastic open plan kitchen / dining / family area with a separate utility room and French doors leading to the garden. Upstairs are four bedrooms with the master benefitting from fitted wardrobes and an en suite shower room.

BUTLER FOUR BEDROOM HOME

✦ DIMENSIONS

First Floor:

Bedroom 1

3.55m x 2.75m
11'8" x 9'0"

En Suite

Bedroom 2

3.29m x 3.05m
10'9" x 10'0"

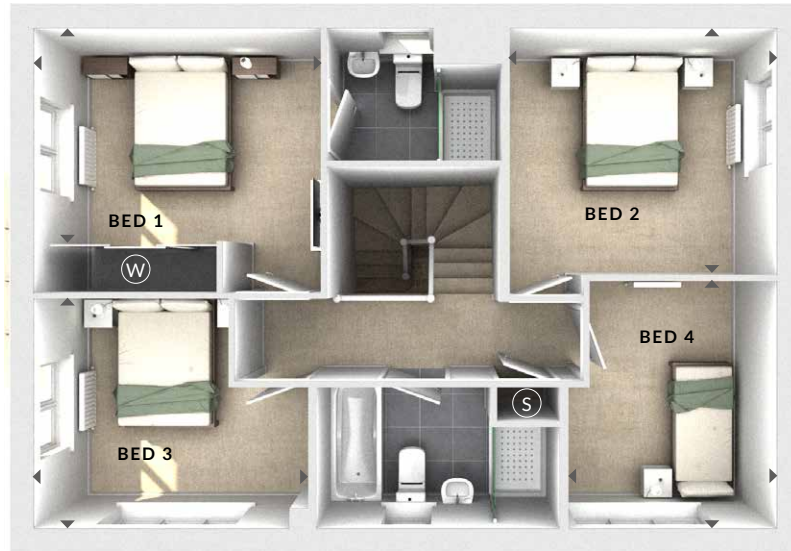
Bedroom 3

3.38m x 2.70m
11'1" x 8'10"

Bedroom 4

2.57m x 3.05m
8'5" x 10'0"

Bathroom



First Floor

Ground Floor:

Lounge

3.47m x 6.18m
11'5" x 20'3"

Kitchen / Dining / Family

4.41m x 6.18m
14'6" x 20'3"

Utility

1.54m x 1.60m
5'1" x 5'3"

(W) Wardrobes

(S) Storage

(C) Cloaks

◀ ▶ Measurement Points

△ External Access



Ground Floor