



3 Floors



4 Bedrooms



Utility



2 En suites

MORRIS FOUR BEDROOM HOME

A four bedroom detached home with spacious lounge and fantastic open plan kitchen / dining area featuring French doors leading to the garden. Downstairs also comprises a utility cupboard and cloakroom. Upstairs, the first floor is home to the family bathroom and three good sized bedrooms. The second floor boasts a generously sized master bedroom featuring fitted wardrobes and an en suite shower room.

MORRIS THREE BEDROOM HOME

✦ DIMENSIONS

Second Floor:

Bedroom 1

3.64m x 4.10m
11'11" x 13'5"

En Suite

First Floor:

Bedroom 2

3.70m x 3.15m
12'1" x 10'4"

En Suite

Bedroom 3

2.67m x 3.05m
8'9" x 10'0"

Bedroom 4

3.48m x 2.28m
11'4" x 7'6"

Bathroom

Ground Floor:

Lounge

3.36m x 4.61m
11'0" x 15'2"

Kitchen / Dining

6.20m x 3.11m
20'4" x 10'3"

(U) Utility

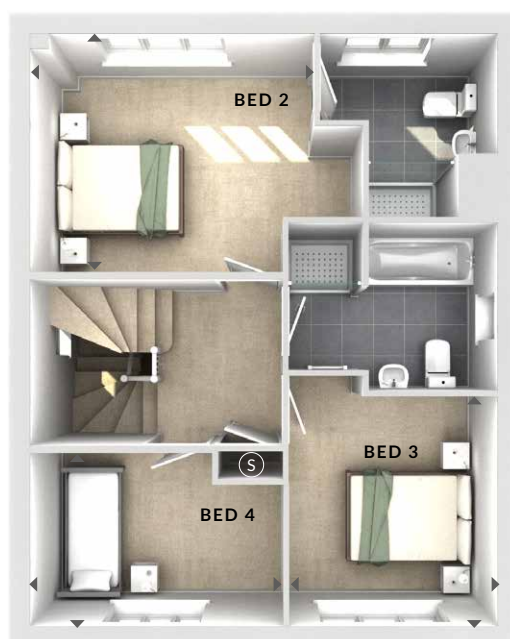
(C) Cloaks

(W) Wardrobes

(S) Storage

◄► Measurement Points

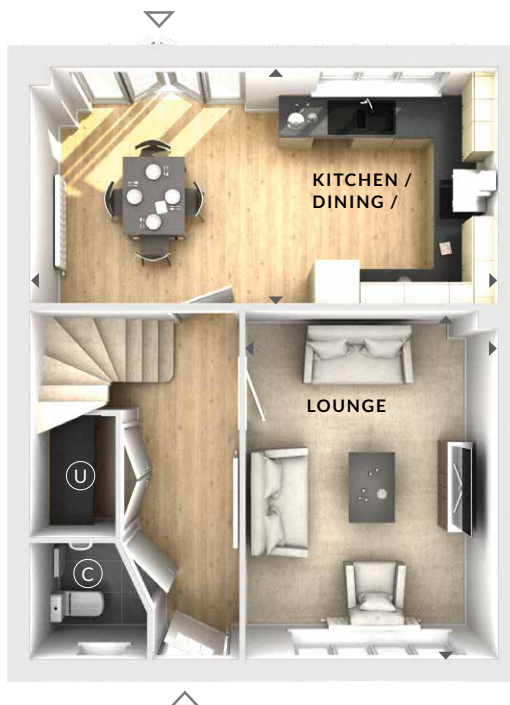
▲ External Access



First Floor



Second Floor



Ground Floor

© Bloor Homes
477 BRICK 7.1

These particulars are intended as a preliminary guide for prospective purchasers and should not be relied upon. The elevational treatment for individual house types shows a typical arrangement. Details of materials and design treatments may vary. Any artist impressions shown are not intended to represent any particular plot. Purchasers are advised to inspect the layout plan to establish the arrangement of the house and surrounding property. Internal layouts show a general arrangement which may vary from plot to plot. Room sizes given are approx. overall finished room sizes and subject to normal building tolerances (ie ± 75mm). In all instances purchasers are advised to inspect plot specific information available from our sales team. Nothing in these particulars or verbal assurance shall form or constitute part of any contract, and are given without any responsibility on behalf of Bloor Homes.

BLOOR HOMES