



2 Floors



2 Bedrooms



Utility



1 En suite

DEKKER TWO BEDROOM HOME

A two bedroom semi-detached home with a perfectly proportioned lounge and a stunning open plan kitchen / dining room with a separate utility, cloakroom and French doors opening onto the rear garden. Upstairs is home to the family bathroom and two spacious double bedrooms with the master featuring an en suite shower room.

DEKKER TWO BEDROOM HOME

✦ DIMENSIONS

First Floor:

Bedroom 1

3.10m x 2.50m
10'2" x 8'2"

En Suite

Bedroom 2

3.80m x 2.40m
12'5" x 7'10"

Bathroom

Ground Floor:

Lounge

3.82m x 4.17m
12'6" x 13'8"

Kitchen / Dining

3.70m x 3.01m
12'2" x 9'10"

Utility

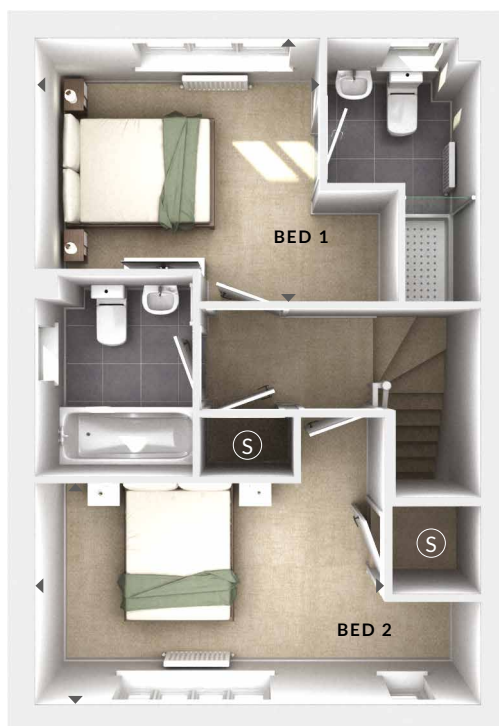
1.05m x 1.70m
3'5" x 5'7"

(S) Storage

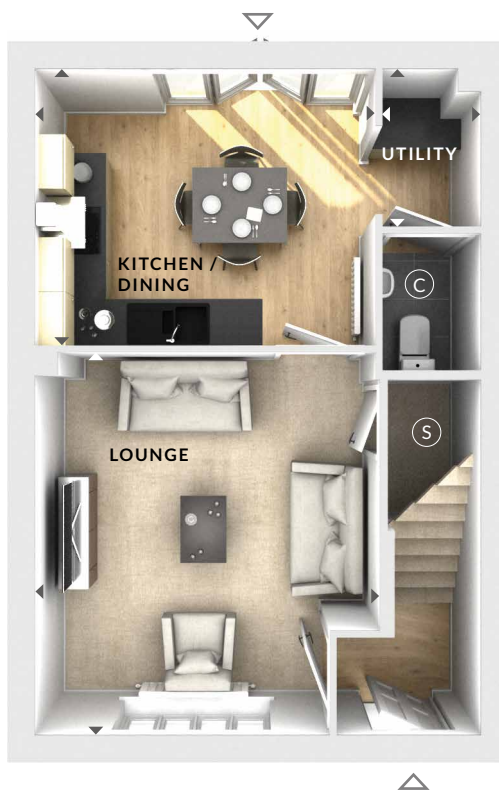
(C) Cloaks

◀▶ Measurement Points

△ External Access



First Floor



Ground Floor

© Bloor Homes
NSS 277B 7.0

These particulars are intended as a preliminary guide for prospective purchasers and should not be relied upon. The elevational treatment for individual house types shows a typical arrangement. Details of materials and design treatments may vary. Any artist impressions shown are not intended to represent any particular plot. Purchasers are advised to inspect the layout plan to establish the arrangement of the house and surrounding property. Internal layouts show a general arrangement which may vary from plot to plot. Room sizes given are approx. overall finished room sizes and subject to normal building tolerances (ie ± 75mm). In all instances purchasers are advised to inspect plot specific information available from our sales team. Nothing in these particulars or verbal assurance shall form or constitute part of any contract, and are given without any responsibility on behalf of Bloor Homes.

BLOOR HOMES